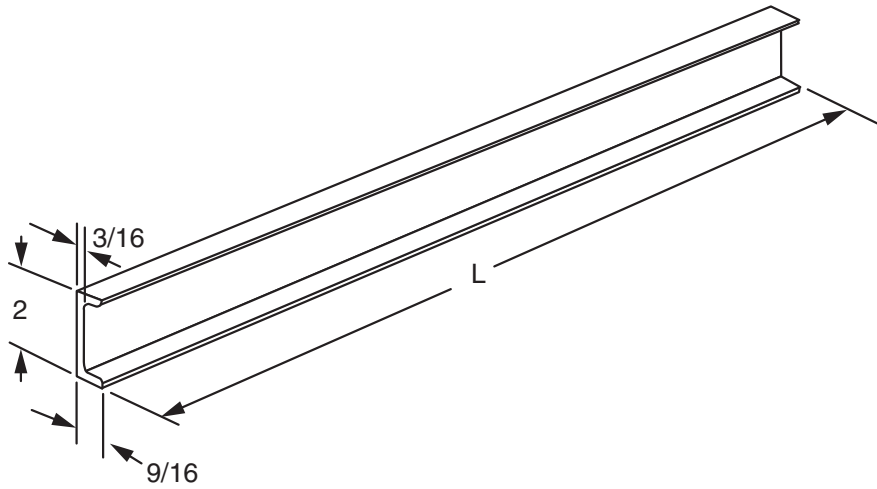


PARALLEL AUXILIARY FRAMING CHANNEL, 2" X 9/16" X 3/16"

Modified:05/17/2022

A



**Ordering Table**

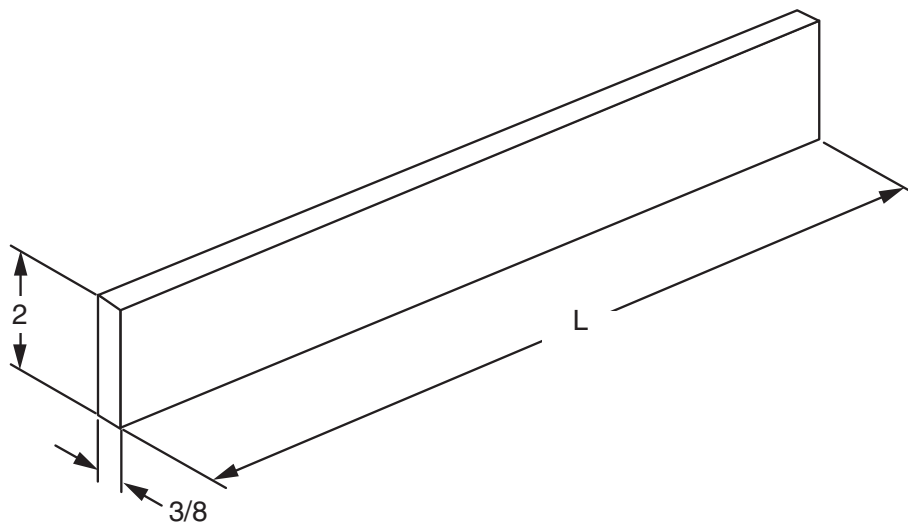
Part Number	Length
00102201xx	2'
00102202xx	4'
00102203xx	6'
00102204xx	8'
00102205xx	10'
00102206xx	12'
00102210xx	20'

**Notes:**

- XX = finish code; standard finish, XX = 30.
- Material: hot rolled steel.

PARALLEL AUXILIARY FRAMING BAR, 2" X 3/8"

Modified:05/17/2022



**Ordering Table**

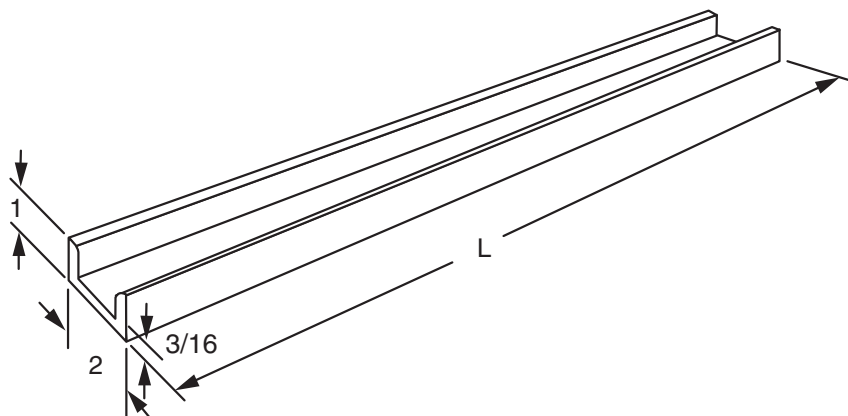
Part Number	Length
00102101xx	2'
00102102xx	4'
00102103xx	6'
00102104xx	8'
00102105xx	10'
00102106xx	12'

**Notes:**

- XX = finish code; standard finish, XX = 30.
- Material: hot rolled steel.

AUXILIARY FRAMING CHANNEL, 2" X 1" X 3/16"

Modified:05/17/2022



**Ordering Table**

Part Number	Length
00100201xx	2'
00100202xx	4'
00100203xx	6'
00100204xx	8'
00100205xx	10'
00100206xx	12'

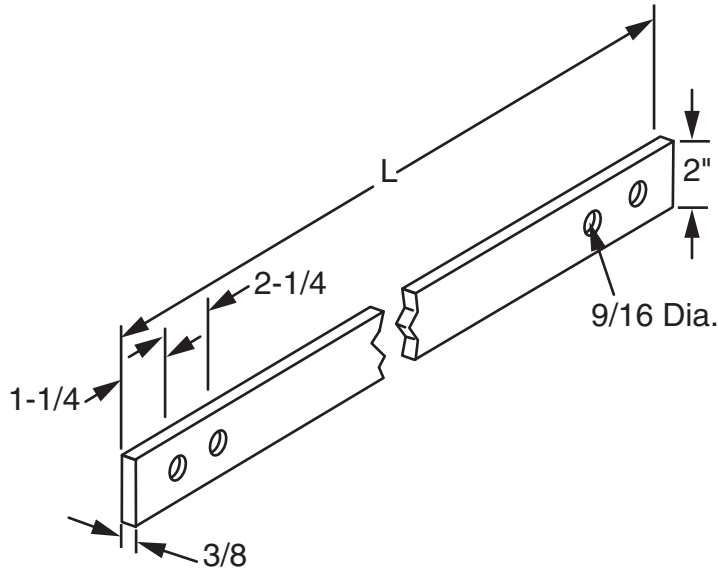
**Notes:**

- XX = finish code; standard finish, XX = 30.
- Material: hot rolled steel.

PARALLEL AUXILIARY FRAMING BAR

Modified:05/17/2022

A



Ordering Table

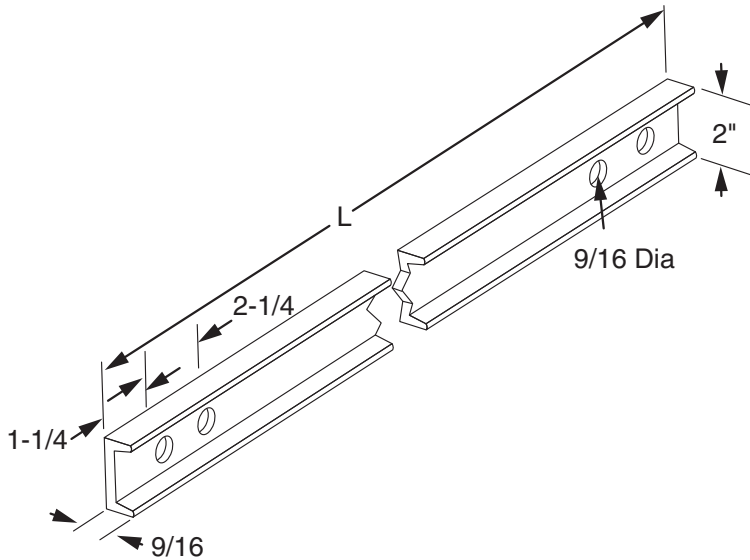
Part Number	Length
21098401xx	2'
21098402xx	4'
21098403xx	6'
21098404xx	8'
21098405xx	10'
21098406xx	12'

Notes:

- All dimensions are reference only.
- Material: steel, A36.
- XX = finish code.

PARALLEL AUXILIARY FRAMING CHANNEL

Modified:05/17/2022



Ordering Table

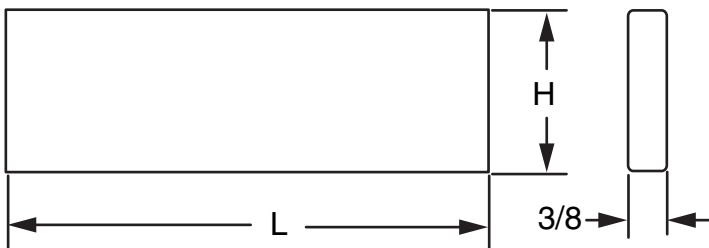
Part Number	Length
21098601xx	2'
21098602xx	4'
21098603xx	6'
21098604xx	8'
21098605xx	10'
21098606xx	12'

Notes:

- All dimensions are reference only.
- Material: steel, A36.
- XX = finish code.

AUXILIARY FLAT BAR

Modified:06/16/2014



Ordering Table

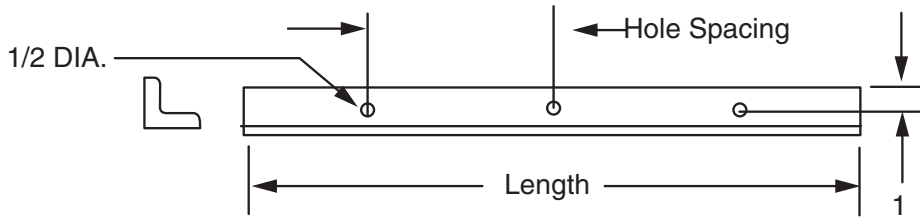
Part Number	Length	Height
00208601xx	2'	1-1/2"
00208602xx	4'	1-1/2"
00208603xx	6'	1-1/2"
00208604xx	8'	1-1/2"
00208605xx	10'	1-1/2"

Notes:

- XX = finish code; standard finish, XX = 30.

WALL ANGLE DRILLED, 2" X 2" X 1/4" ANGLE IRON

Modified:05/17/2022



**Ordering Table**

Part Number	1/2" Holes	Hole Spc	Length
00303301xx	2	4"	6"
00303302xx	2	8"	12"
00303303xx	2	11"	15"
00303304xx	2	12"	18"
00303305xx	3	36"	120"

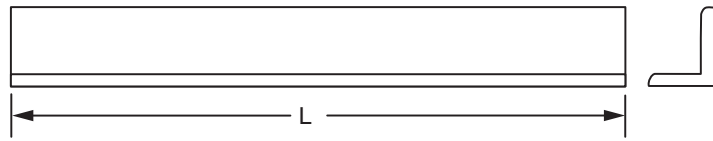
A

**Notes:**

- XX = finish code; standard finish, xx = 30.

AUXILIARY FRAMING ANGLE

Modified:05/17/2022



**2"x2"x3/16" Ordering Table**

Part Number	L
00303401xx	2'
00303402xx	4'
00303403xx	6'
00303404xx	8'
00303405xx	10'
00303406xx	12'

**3"x3"x1/4" Ordering Table**

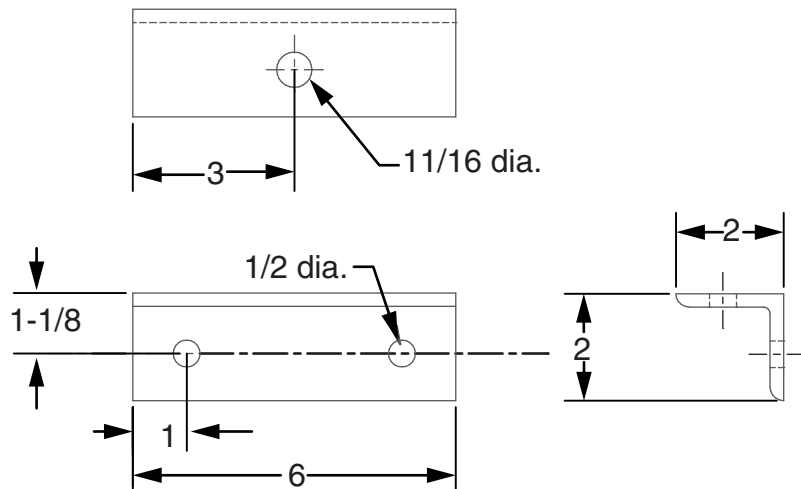
Part Number	L
00303501xx	2'
00303502xx	4'
00303503xx	6'
00303504xx	8'
00303505xx	10'
00303506xx	12'

**Notes:**

- XX = finish code; standard finish, xx = 30.

WALL ANGLE, 6" PREDRILLED

Modified:06/17/2014



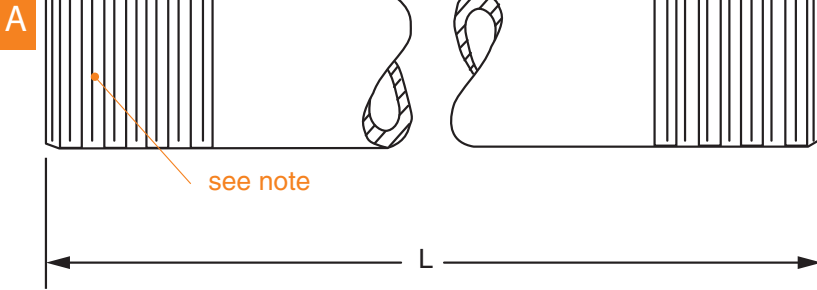
**Ordering Table**

**Part Number**

20747700xx

**STANDARD PIPE**

Modified:07/17/2014



**2" Ordering Table**

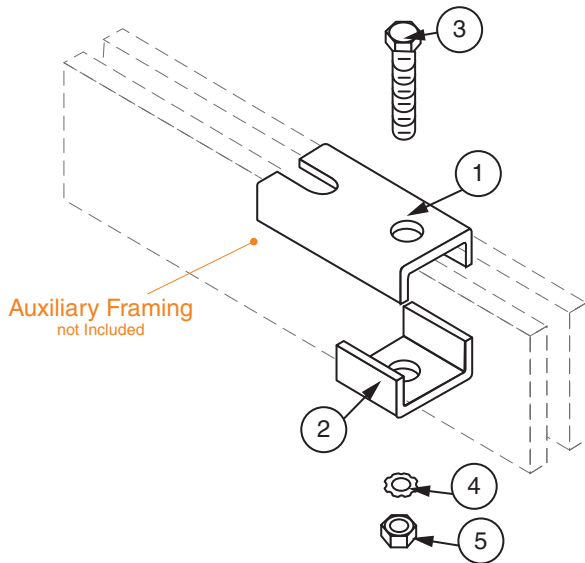
Part Number	L
00303601xx	6'-0"
00303602xx	6'-6"
00303603xx	7'-0"
00303604xx	7'-6"
00303605xx	8'-0"
00303606xx	8'-6"
00303607xx	9'-0"
00303608xx	9'-6"
00303609xx	10'-0"
00303610xx	10'-6"
00303611xx	11'-0"
00303612xx	11'-6"

**1" Ordering Table**

Part Number	L
00303701xx	3-1/2"
00303702xx	2'
00303703xx	4'
00303704xx	6'
00303705xx	8'
00303706xx	10'

**ANTI-SLIP KIT**

Modified:07/16/2014



**Ordering Table**

Part Number	C
2156960010	Bar
2125910010	Channel

**Stock List**

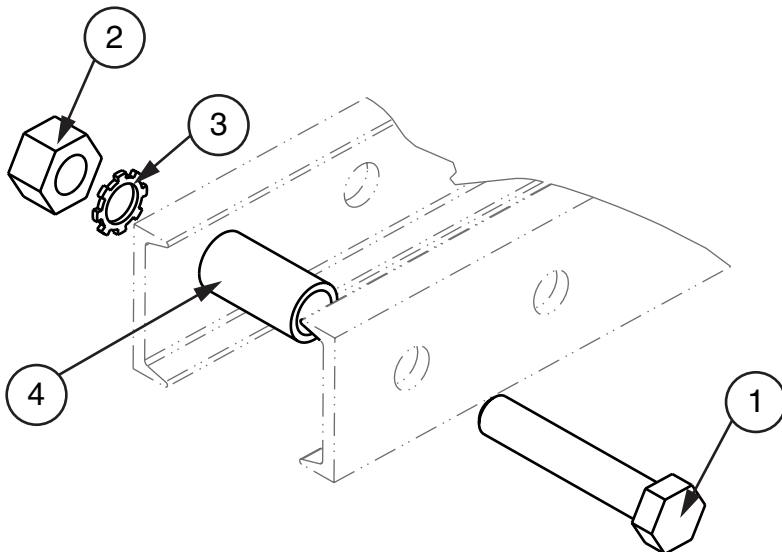
Item	QTY	Description
1	1	Clip
2	1	Clip
3	1	1/2"-13 X 2-3/4" HHCS
4	1	External Tooth Lock Washer
5	1	1/2"-13 Hex Nut

**Notes:**

- Auxiliary framing bar or channel not included. Refer to 210986 or 210984.

**AUXILLIARY FRAMING SPACER**

Modified:07/16/2014



**Ordering Table**

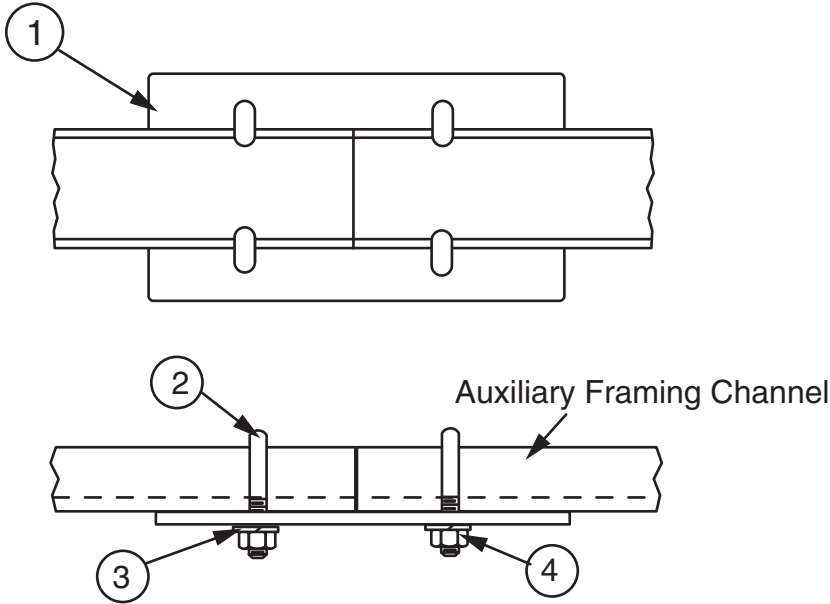
Part Number	Hardware
22014001xx	1/2"
22014002xx	3/8"

**Stock List**

Item	QTY	Description
1	1	Hex Head Cap Screw
2	1	Hex Nut
3	1	External Tooth Lock Washer
4	1	Tube Spacer

**AUXILIARY CHANNEL, JUNCTIONING 2" X 1" X 3/16"**

Modified:06/04/2014



**Ordering Table**

**Part Number**

00100300xx

**Stock List**

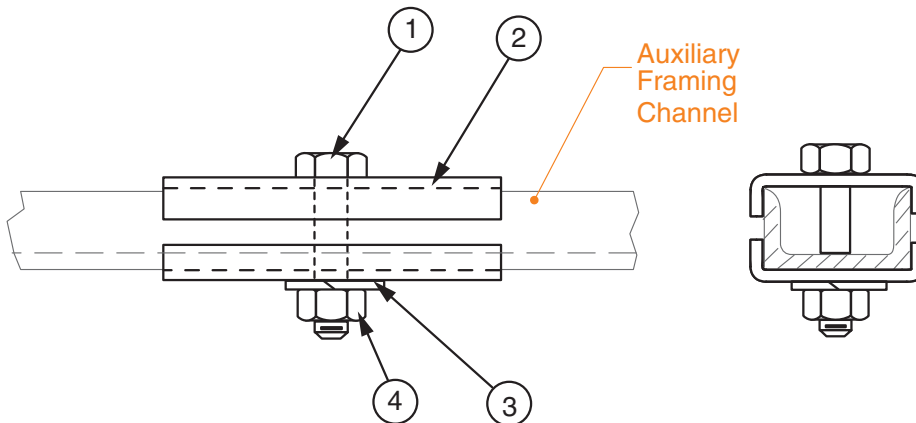
Item	QTY	Description
1	1	Plate
2	4	1/4" J-Bolt
3	4	1/4"-20 Lock Washer
4	4	Nut

**Notes:**

- Finish is zinc plated and gold chromate, finish code 10.
- Framing Channel is not included; refer to 001002.

**AUXILIARY CHANNEL, JUNCTIONING 2" X 1" X 3/16"**

Modified:09/19/2017



**Ordering Table**

**Part Number**

00100500xx

**Stock List**

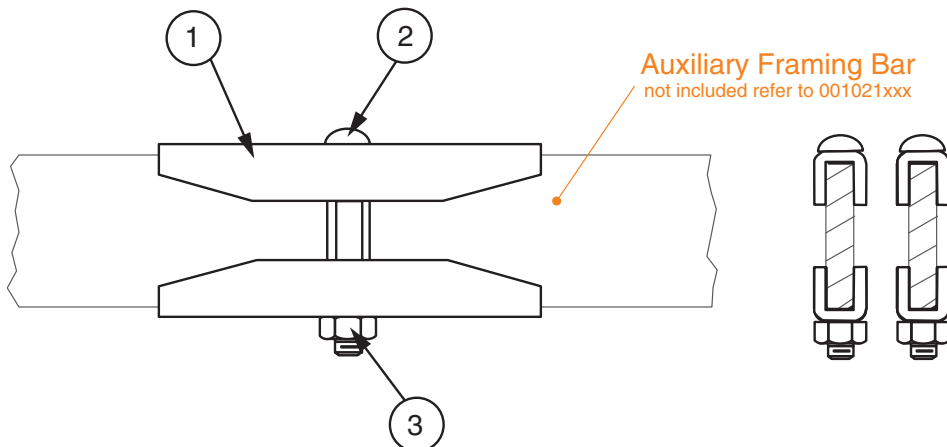
Item	QTY	Description
1	1	3/8"-16 X 1-3/4" HHCS
2	2	Splice Clamp
3	1	3/8" Lock Washer
4	1	3/8"-16 Nut

**Notes:**

- Finish is zinc plated and gold chromate, finish code 10.
- Not included; refer to 001002.

**PARALLEL AUXILIARY FRAMING BAR JUNCTION WITH STRAIGHT CLAMPS**

Modified:07/16/2014



**Ordering Table**

**Part Number**

00102300xx

**Stock List**

Item	QTY	Description
1	4	Splice Clamp
2	2	3/8" Bolt
3	2	3/8"-16 Nut

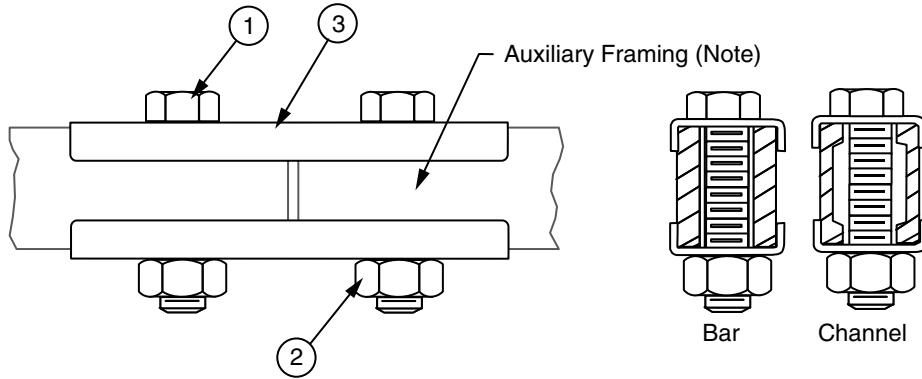
**Notes:**

- Finish is zinc plated and gold chromate, finish code 10.
- Not included; refer to 001021.

**SPLICING PARALLEL AUXILIARY FRAMING, 2 BOLT**

Modified:06/18/2014

A



**Ordering Table**

Part Number	Aux
00103000xx	Bar
00103001xx	Channel

**Stock List**

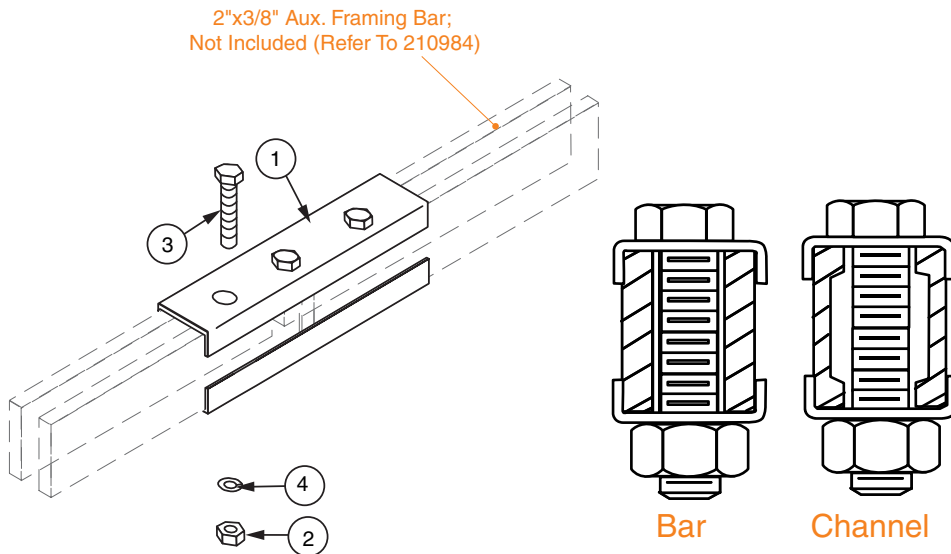
Item	QTY	Description
1	2	5/8"-11" x 3" Bolts
2	2	5/8"-11 Nut
3	2	Clamp

**Notes:**

- Finish is zinc plated and gold chromate.
- Not included; refer to 001021 or 001022.

**SPLICING AUXILIARY FRAMING, 3-BOLT**

Modified:06/24/2014



**Ordering Table**

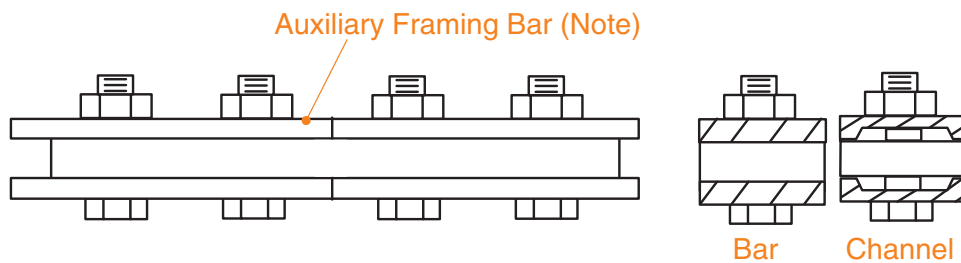
Part Number	Type
2084900010	Bar
21099600xx	Channel

**Stock List**

Item	QTY	Description
1	2	Clamps
2	3	5/8"-11 Hex Nut
3	3	5/8"-11 HHCS
4	3	5/8" Lock Washer

**PARALLEL AUXILIARY FRAMING SPLICE FOR RIGID SPLICE APPLICATION**

Modified:06/24/2014



**Ordering Table**

Part Number	Aux	Hardware
00104600xx	bar	3/8"
00104601xx	channel	1/2"

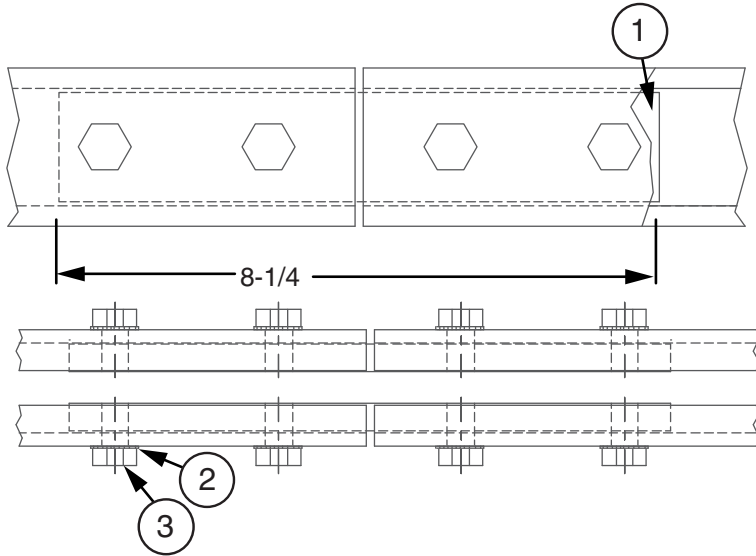
**Stock List**

Item	QTY	Description
1	4	Nut
2	1	Splice Bar
3	4	2" HHCS

**Notes:**

- XX = finish code; standard finish, XX = 30.
- Not included; refer to 001021 or 001022.

**PARALLEL AUXILIARY FRAMING CHANNEL SPLICE KIT**



**Ordering Table**

Part Number	Lock Washer
21098800xx	split
21399300xx	external tooth

A

**Stock List**

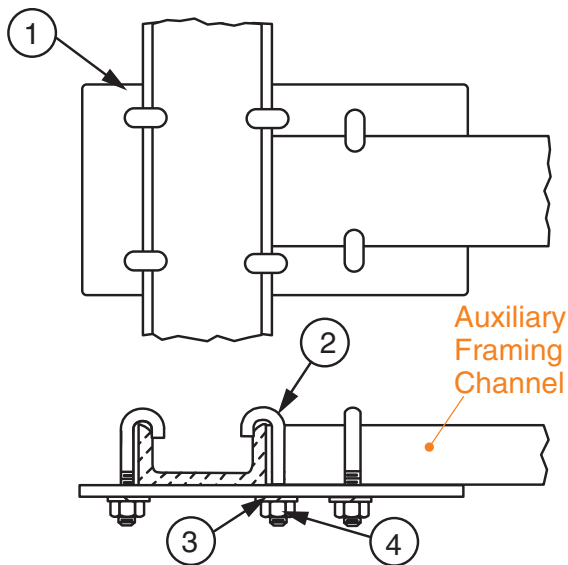
Item	QTY	Description
1	2	Splice Bar
2	8	1/2"-13 X 5/8" HHCS
3	8	1/2" Lock Washer

**Notes:**

- Finish is zinc plated and gold chromate.
- Not included; refer to 001022.

**AUXILIARY CHANNEL AT RIGHT ANGLES, JUNCTIONING 2" X 1" X 3/16"**

Modified:07/17/2014



**Ordering Table**

Part Number
00100400xx

**Stock List**

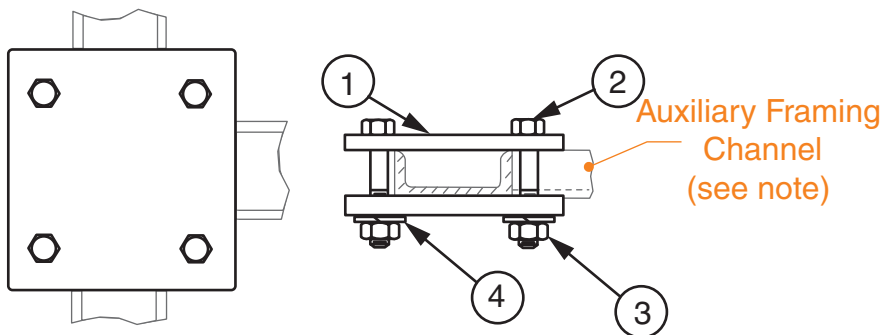
Item	QTY	Description
1	1	Plate
2	6	J-Bolt
3	6	1/4" Lock Washer
4	6	1/4"-20 Nut

**Notes:**

- Finish is zinc plated and gold chromate, finish code 10.
- Not included; refer to 001002.

**"T" JUNCTION WITH AUXILIARY CHANNEL -- 2" X 1" X 3/16"**

Modified:06/17/2014



**Ordering Table**

Part Number
00100700xx

**Stock List**

Item	QTY	Description
1	2	Junction Plate
2	4	3/8"-16 X 2" HHCS
3	4	3/8"-16 HHN
4	4	Spring Lock Washer

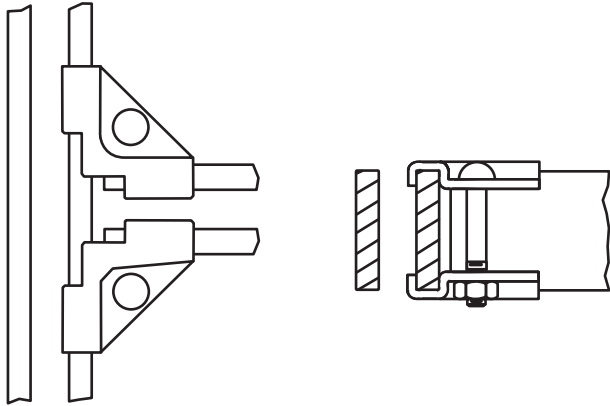
**Notes:**

- Finish is zinc plated and gold chromate, finish code 10.
- Not included; refer to 001002.

**PARALLEL AUXILIARY FRAMING BAR "T" JUNCTION WITH CORNER CLAMPS**

Modified:07/17/2014

A



**Ordering Table**

**Part Number**

00102400xx

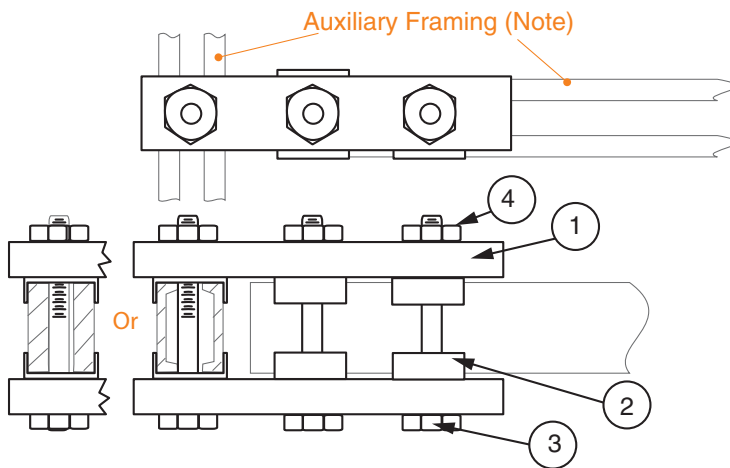
**Stock List**

Item	QTY	Description
1	4	Splice Clamp
2	2	3/8"-16 X 2" Bolt
3	2	3/8"-16 Nut

**Notes:**

- Finish is zinc plated and gold chromate, finish code 10.
- Not included; refer to 001021.

**PARALLEL AUXILIARY FRAMING CHANNEL OR BAR "T" JUNCTION WITH SPLICE BAR**



**Ordering Table**

Part Number	Aux
00102401xx	Channel
00102403xx	Bar

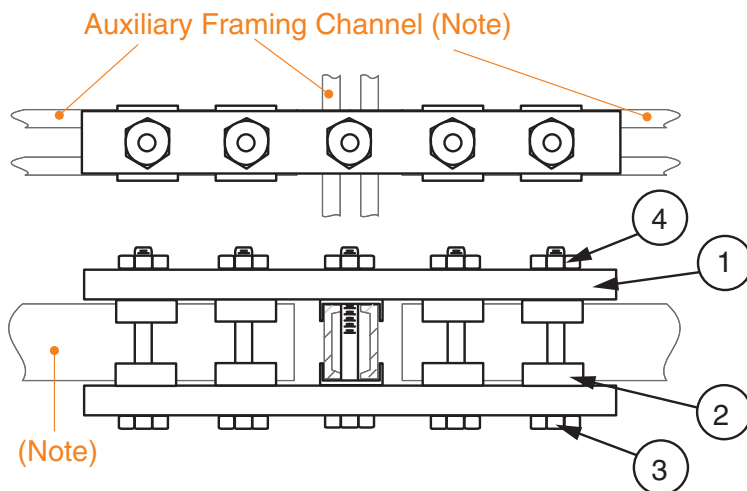
**Stock List**

Item	QTY	Description
1	2	Splice Bar
2	6	Clip
3	3	5/8-11 X 3-3/4" HHCS
4	3	5/8-11 Hex Nut

**Notes:**

- Finish is zinc plated and gold chromate, finish code 10.
- Not included; refer to 001022 or 001021.

**PARALLEL AUXILIARY FRAMING CHANNEL "X" JUNCTION WITH SPLICE BAR**



**Ordering Table**

**Part Number**

00102402xx

**Stock List**

Item	QTY	Description
1	2	Splice Bar
2	10	Clip
3	5	5/8-11 X 3-3/4" HHCS
4	5	5/8-11 Hex Nut

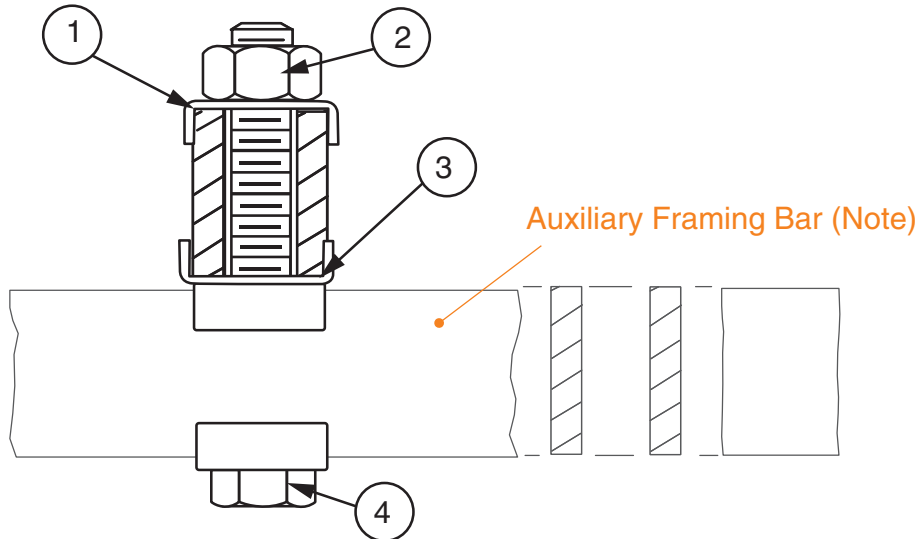
**Notes:**

- Finish is zinc plated and gold chromate, finish code 10.
- Not included; refer to 001022.



**CONNECTING PARALLEL AUX. FRAMING BAR ACROSS AUX. FRAMING BAR**

Modified:05/03/2018



**Ordering Table**

**Part Number**

00102900xx

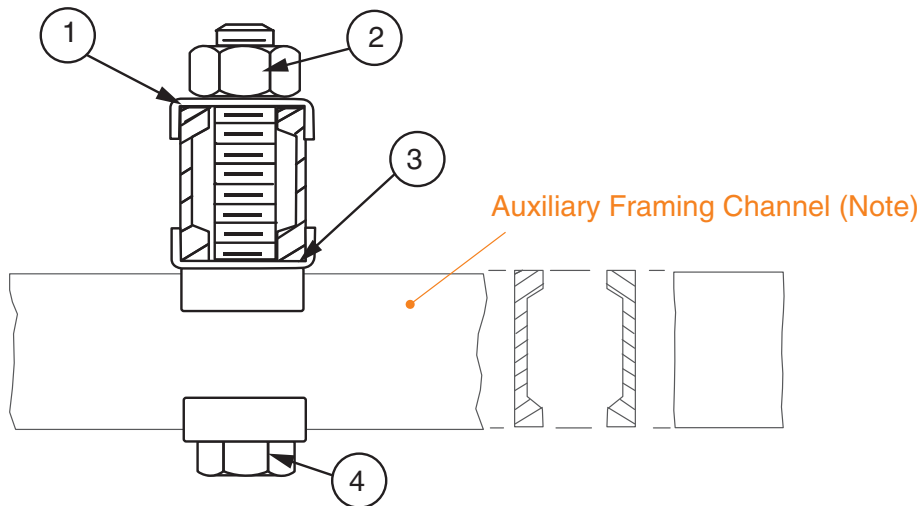
**Stock List**

Item	QTY	Description
1	2	Clip
2	1	5/8-11 Nut
3	1	Clip
4	1	5/8-11 X 5" HHCS

**Notes:**

- Finish is zinc plated and gold chromate, finish code 10.
- Not included; refer to 001021.

**CONNECTING PARALLEL AUX. FRAMING CHANNEL ACROSS AUX. FRAMING CHANNEL**



**Ordering Table**

**Part Number**

00102901xx

**Stock List**

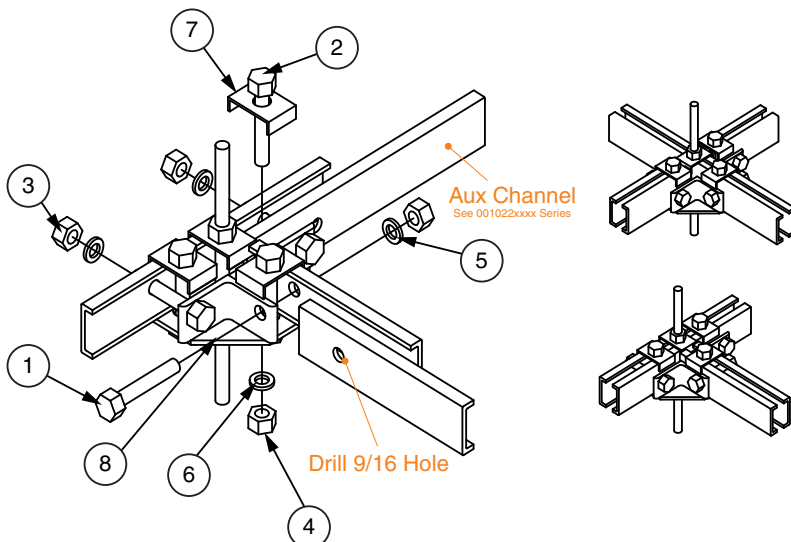
Item	QTY	Description
1	2	Clip
2	1	5/8-11 Nut
3	1	Clip
4	1	5/8-11 X 5" HHCS

**Notes:**

- Finish is zinc plated and gold chromate, finish code 10.
- Not included; refer to 001022.

**T-JUNCTION FOR AUX FRAMING CHANNEL**

Modified:06/26/2014



**Ordering Table**

**Part Number**

2141190110

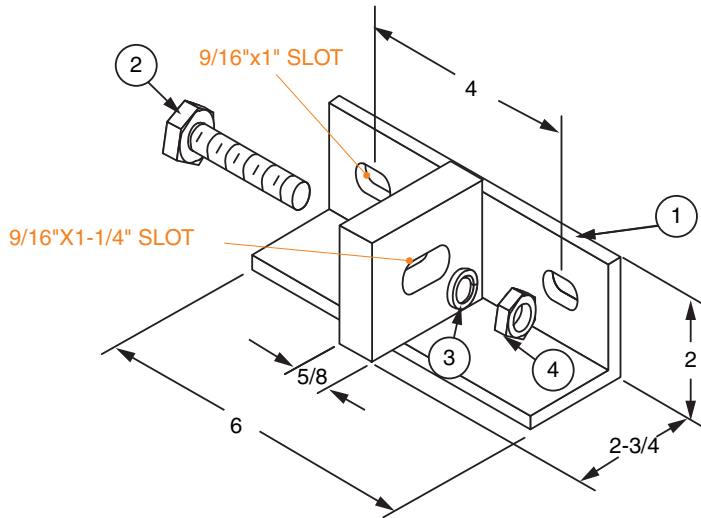
**Stock List**

Item	QTY	Description
1	3	1/2-13 HHCS
2	3	5/8-13 HHCS
3	3	1/2-13 Hex Nut
4	5	5/8-11 Hex Nut
5	3	1/2 Helical Spring Washer
6	5	5/8 Helical Spring Washer
7	4	Clip Washer
8	1	Junction Bracket

**WALL SUPPORT BRACKET KIT FOR AUXILIARY FRAMING**

Modified:06/26/2014

A



**Ordering Table**

**Part Number**

21417501xx

**Stock List**

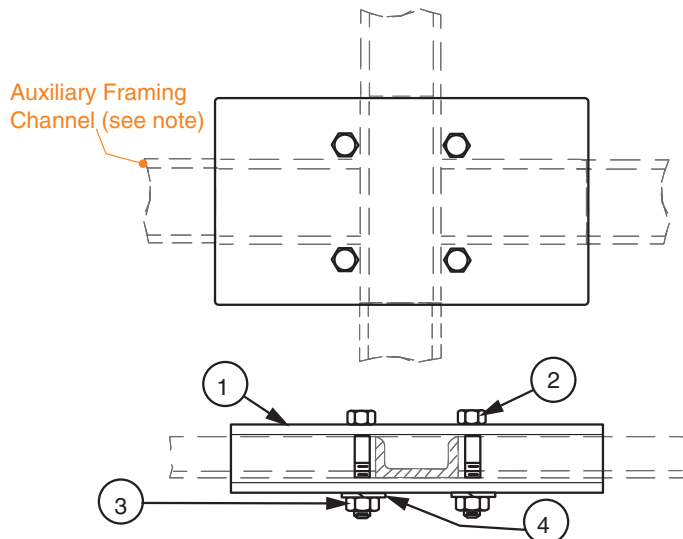
Item	QTY	Description
1	1	Support Bracket
2	1	1/2"-13 X 3/4" HHCS
3	1	1/2" Lock Washer
4	1	1/2"-13 Hex Nut

**Notes:**

- XX= finish code

**JUNCTIONING AUXILIARY FRAMING CHANNEL AT RIGHT ANGLES -- 2" X 1" X 3/16"**

Modified:06/26/2014



**Ordering Table**

**Part Number**

00100600xx

**Stock List**

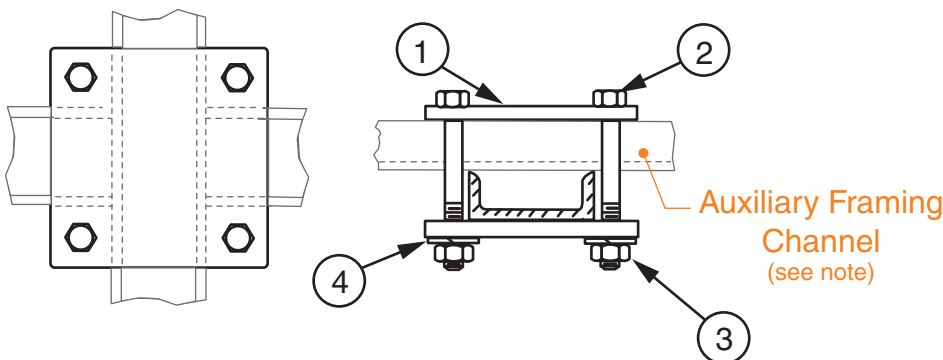
Item	QTY	Description
1	2	Plate
2	4	3/8"-16 X 2" HHCS
3	4	3/8"-16 Nut
4	4	Lock Washer

**Notes:**

- Finish is zinc plated and gold chromate, finish code 10.
- Auxiliary Framing Channel not included; refer to 001002.

**CROSSOVER JUNCTION FOR AUXILIARY CHANNEL -- 2" X 1" X 3/16"**

Modified:06/04/2014



**Ordering Table**

**Part Number**

00100800xx

**Stock List**

Item	QTY	Description
1	2	Junction Plate
2	4	3/8"-16 X 3" HHCS
3	4	3/8"-16 HHN
4	4	Spring Lock Washer

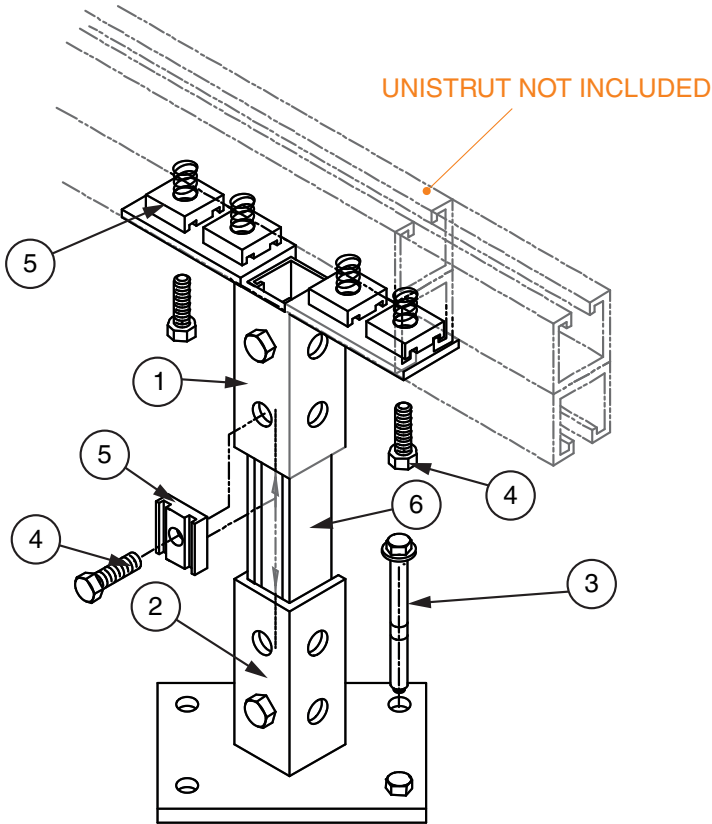
**Notes:**

- Finish is zinc plated and gold chromate, finish code 10.
- Auxiliary Framing Channel not included; refer to 001002.

**UNISTRUT FLOOR SUPPORT**

Modified:06/26/2014

A



**Ordering Table**

**Part Number**

2124620010

**Stock List**

Item	QTY	Description
1	1	Unistrut Fitting
2	1	Unistrut Post Base
3	4	M10-20 Expansion Anchor
4	8	1/2"-13 X 1-1/4" HHCS
5	8	1/2" Unistrut Spring Nut
6	1	Unistrut, P1000, 12"

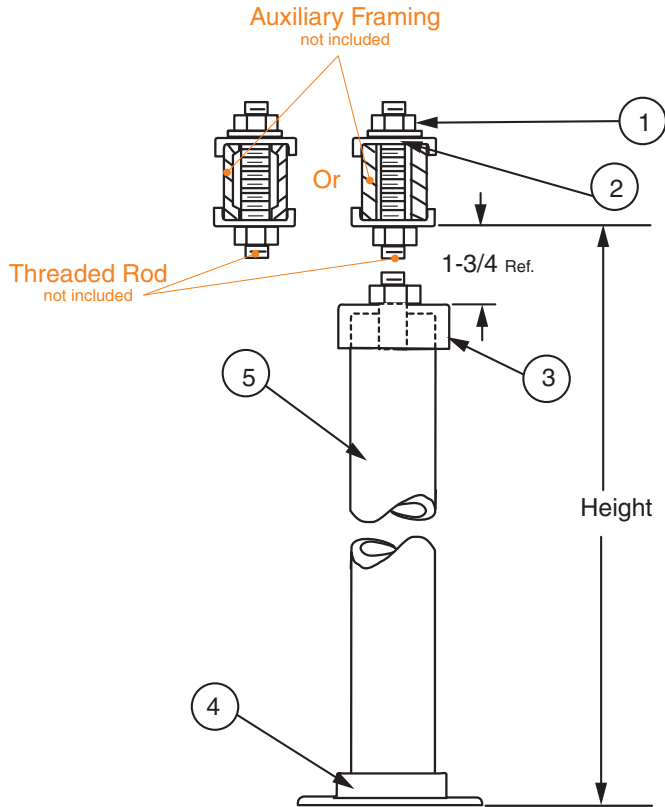
**Notes:**

- Order unistrut as required

**SUPPORTING PARALLEL AUXILIARY FRAMING BAR OR CHANNEL WITH 2" PIPE STAND**

Modified:07/16/2014

A



**Ordering Table**

Part Number	Height	Aux
00104201xx	7'	Bar
00104202xx	7'-6"	Bar
00104203xx	8'	Bar
00104204xx	9'	Bar
00104205xx	11'-6"	Bar
00104206xx	11'-8"	Bar
00104207xx	7'	Channel
00104208xx	7'-6"	Channel
00104209xx	8'	Channel
00104210xx	9'	Channel
00104211xx	11'-6"	Channel
00104212xx	11'-8"	Channel

**Stock List**

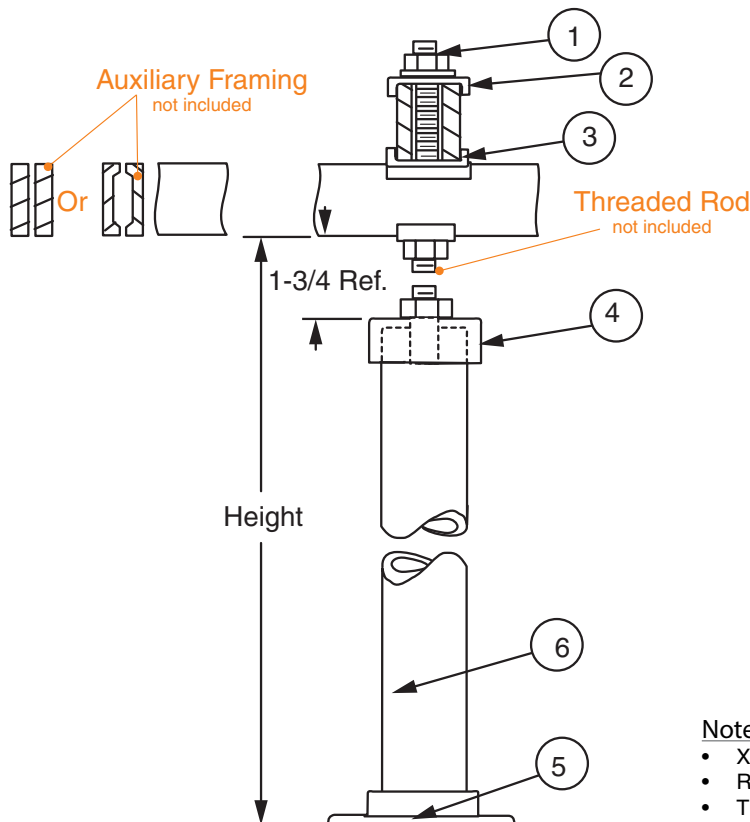
Item	QTY	Description
1	3	5/8-11 Hex Nut
2	2	Clip
3	1	Pipe Cap
4	1	Floor Flange
5	1	2" Pipe

**Notes:**

- XX in part number refers to finish.
- Refer to ordering table for overall height, including pipe.
- Threaded rod , Auxiliary Framing & Floor Mounting hardware not included

**SUPPORTING PARALLEL AUX. FRAMING WITH 2" PIPE STAND AT CROSS OVER**

Modified:07/16/2014



**Ordering Table**

Part Number	Height	Aux
00104301xx	7'	Bar
00104302xx	7'-6"	Bar
00104303xx	8'	Bar
00104304xx	9'	Bar
00104305xx	11'-6"	Bar
00104306xx	11'-8"	Bar
00104307xx	7'	Channel
00104308xx	7'-6"	Channel
00104309xx	8'	Channel
00104310xx	9'	Channel
00104311xx	11'-6"	Channel
00104312xx	11'-8"	Channel

**Stock List**

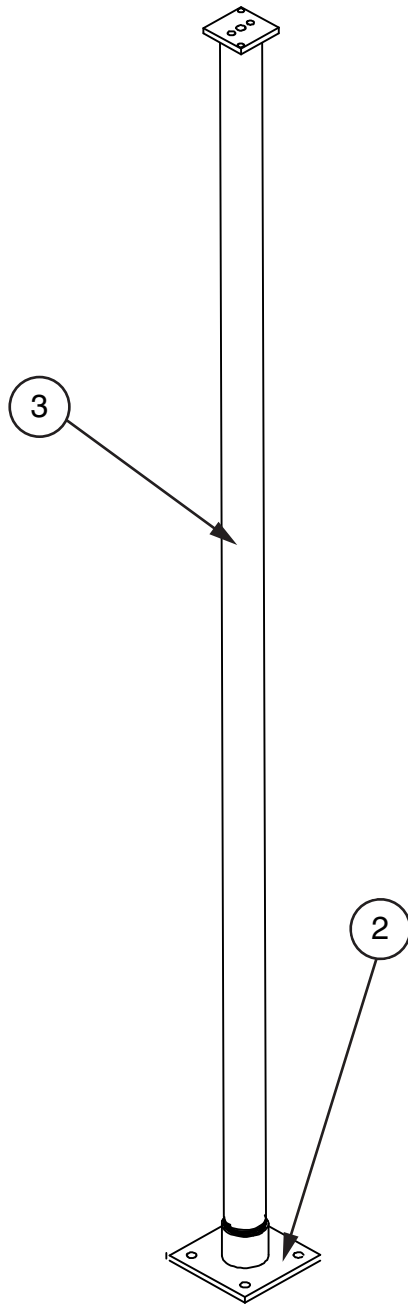
Item	QTY	Description
1	3	5/8-11 Hex Nut
2	2	Clip
3	1	Double Clip
4	1	Pipe Cap
5	1	Floor Flange
6	1	2" Pipe

**Notes:**

- XX in part number refers to finish.
- Refer to ordering table for overall height, including pipe.
- Threaded rod , Auxiliary Framing not included.
- For floor mounting use 212621 floor mounting hardware.

**PIPE STANCHION KIT**

Modified:07/17/2014



**Ordering Table**

Part Number	Height
21948801xx	7'-0"
21948802xx	8'-0"
21948803xx	9'-0"
21948804xx	10'-0"
21948805xx	11'-8"
21948806xx	7'-6"
21948807xx	7'-8"
21948808xx	7'-10"
21948809xx	8'-6"
21948810xx	8'-8"
21948811xx	9'-6"
21948812xx	11'-6"

**Stock List**

Item	QTY	Description
1	1	Hardware Kit For Pipe Stanchion
2	1	Base Assembly
3	1	Pipe Assembly

**Notes:**

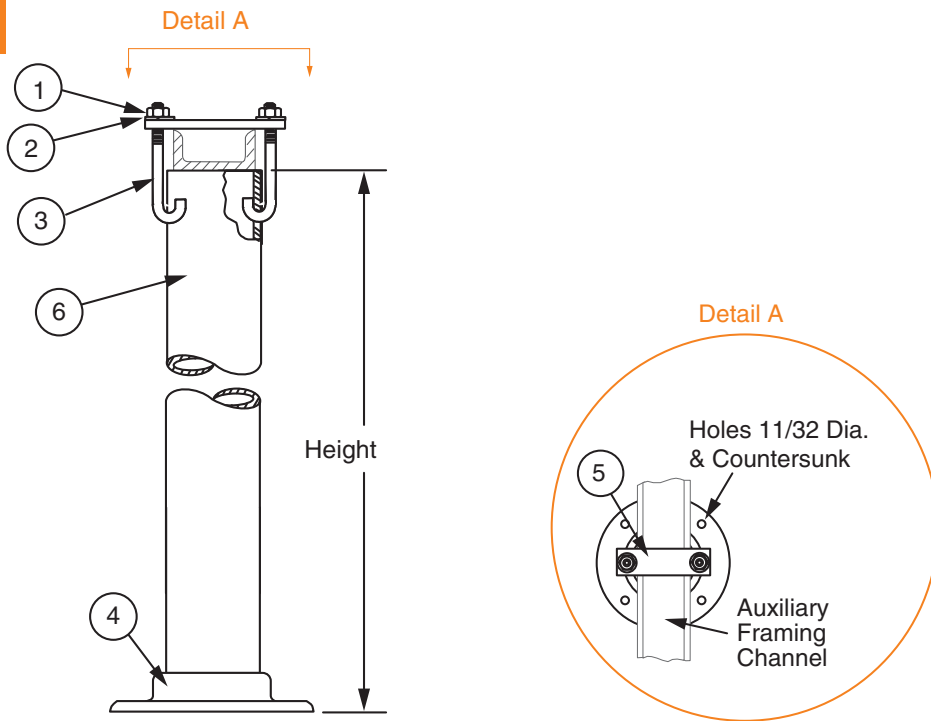
- Top is designed for multiple auxiliary attachment.
- Bottom has threads for minor adjustments. Make sure to measure total height at installation time.
- Top tapped for 1/2" & 5/8" to attach parallel framing and 2"x 1" channel.
- For floor mounting use 004019 floor mounting hardware.
- Nominal Adjustment

A

**SUPPORTING AUXILIARY CHANNEL FROM FLOOR WITH 2" PIPE STAND**

Modified:06/26/2014

A



**Ordering Table**

Part Number	Height
00101901xx	7'-0"
00101902xx	7'-6"
00101903xx	8'-0"
00101904xx	9'-0"
00101905xx	11'-6"
00101906xx	11'-8"

**Stock List**

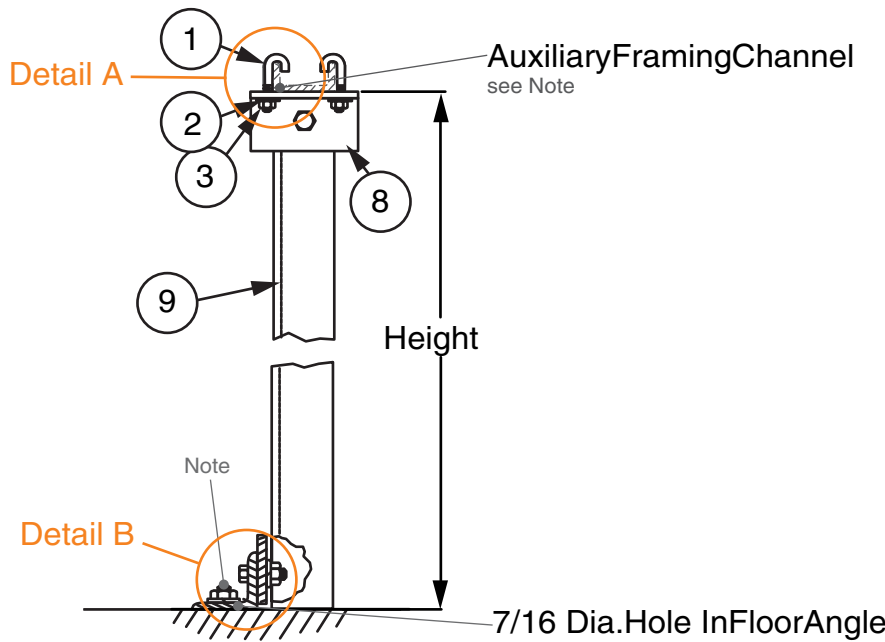
Item	QTY	Description
1	2	1/4"-20 Nut
2	2	1/4" Lock Washer
3	2	J-Bolt
4	1	Floor Flange
5	1	Plate
6	1	Pipe

**Notes:**

- XX = finish code; standard finish, XX = 30.
- Refer to ordering table for pipe heights available.
- Not included; refer to 001002.

**SUPPORTING AUXILIARY CHANNEL FROM FLOOR WITH SUPPORT ANGLE**

Modified:06/26/2014



**Ordering Table**

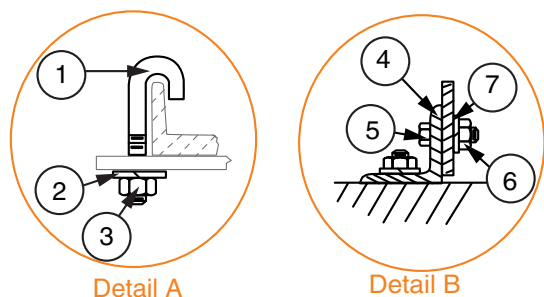
Part Number	Height
00102001xx	7'
00102002xx	7'-6"
00102003xx	8'
00102004xx	9'
00102005xx	11'-6"
00102006xx	11'-8"

**Stock List**

Item	QTY	Description
1	2	J-Bolt
2	2	1/4" Lockwasher
3	2	1/4"-20 Nut
4	1	Bottom Angle
5	2	3/8"-16 X 1" hhcs
6	2	3/8"-16 Nut
7	2	3/8" Lock Washer
8	1	Top Angle
9	1	Support Angle

**Notes:**

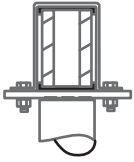
- XX = finish code; standard finish, XX = 30.
- Not included; refer to 001002.
- Not included; refer to hardware section for various methods of attachment.



**PIPE STAND E/W INSULATING PAD**

Modified:07/17/2014

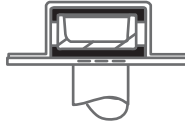
Order Separately As Required



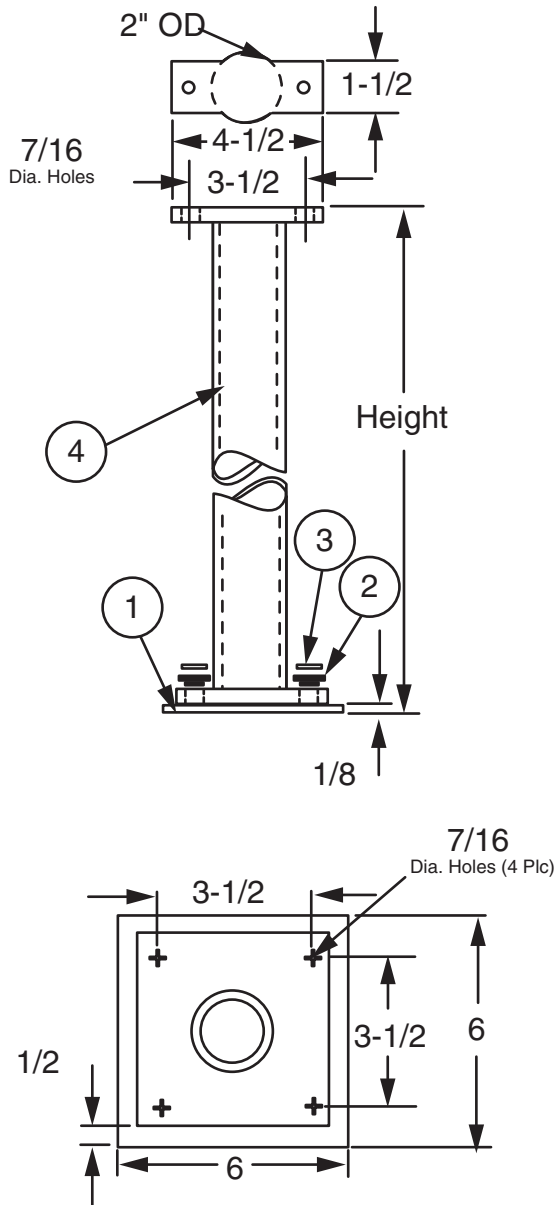
001054xxxx



002114xxxx



00105300xx



**Ordering Table**

Part Number	Height
00105501xx	7'-0"
00105502xx	7'-6"
00105503xx	8'-0"
00105504xx	9'-0"
00105505xx	11'-6"
00105506xx	11'-8"

**Stock List**

Item	QTY	Description
1	1	Insulator Pad
2	4	Bushing
3	4	3/8 Flat Washer
4	1	Pipe Assembly

**Notes:**

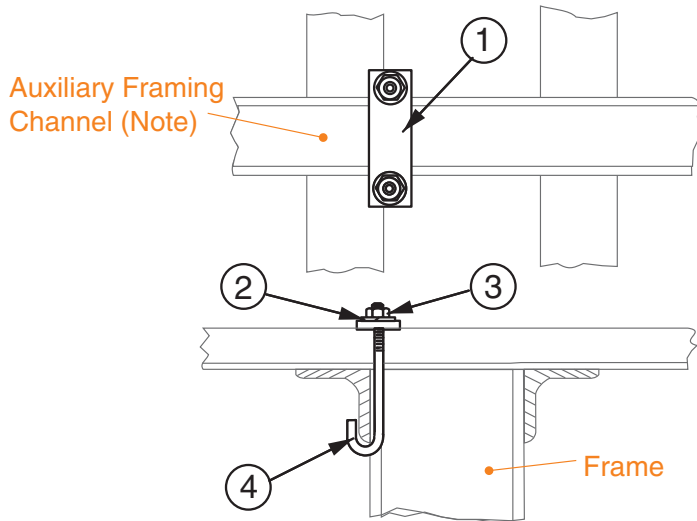
- XX in part number refers to finish code.
- Insulating material is rated U.L. 94 V-1 and has an oxygen index rating of greater than 29.
- Refer to ordering table for overall heights available.

A

**FASTENING 2" X 1" X 3/16" AUXILIARY CHANNEL TO TOP ANGLE OF FRAME**

Modified:06/26/2014

A



**Ordering Table**

**Part Number**

00101500xx

**Stock List**

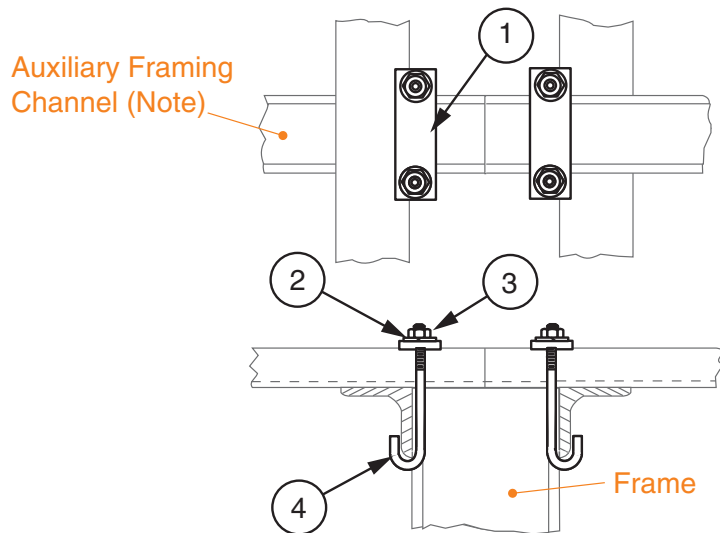
Item	QTY	Description
1	1	Plate
2	2	5/16" Lock Washer
3	2	5/16"-18 Nut
4	2	J-Bolt

**Notes:**

- Finish is zinc plated and gold chromate, finish code 10.
- Not included; refer to 001002.

**JUNCTIONING 2" X 1" X 3/16" AUXILIARY CHANNEL BETWEEN TOP ANGLES OF FRAME**

Modified:06/26/2014



**Ordering Table**

**Part Number**

00101600xx

**Stock List**

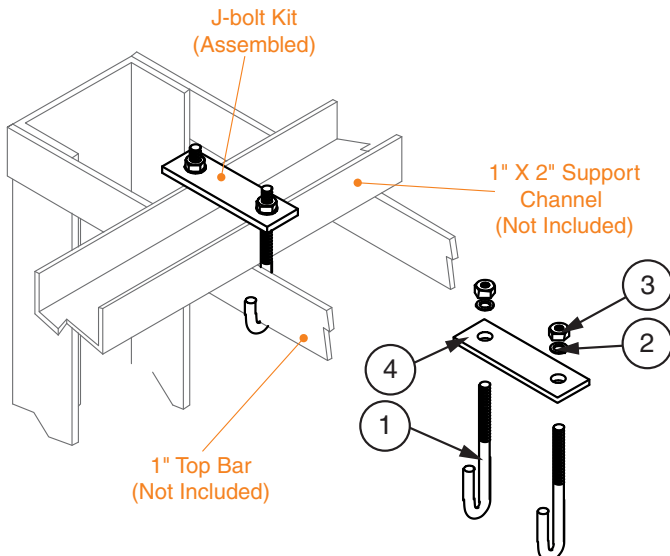
Item	QTY	Description
1	2	Plate
2	4	5/16" Lock Washer
3	4	5/16"-18 Nut
4	4	J-Bolt

**Notes:**

- Finish is zinc plated and gold chromate, finish code 10.
- Not included; refer to 001002.

**J-BOLT KIT**

Modified:06/26/2014



**Ordering Table**

Part Number	J-Bolt Length
21256000xx	2-3/4"
21765000xx	1-3/4"

**Stock List**

Item	QTY	Description
1	2	5/16" J-Bolt
2	2	5/16" Lock Washer
3	2	5/16-18 Hex Nut
4	1	Mounting Plate

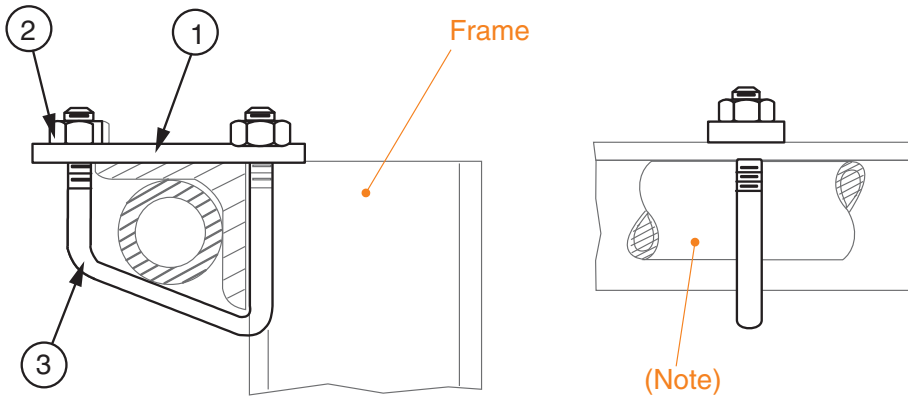
**Notes:**

- Finish is zinc plated and gold chromate, finish code 10.



**FASTENING FRAME TOP ANGLE TO AUXILIARY PIPE**

Modified:06/26/2014



**Ordering Table**

**Part Number**

00101200xx

**Stock List**

Item	QTY	Description
1	1	Plate
2	2	3/8"-16
3	1	V-Bolt

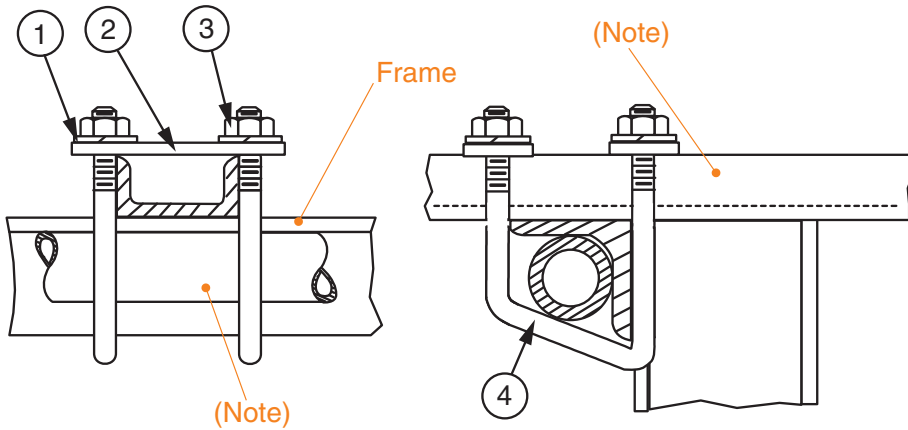
**Notes:**

- Finish is zinc plated and gold chromate, finish code 10.
- Pipe not included; refer to 003037.

A

**FASTENING FRAME TOP ANGLE TO AUXILIARY CHANNEL-- 2" X 1" X 3/16"**

Modified:06/04/2014



**Ordering Table**

**Part Number**

00101300xx

**Stock List**

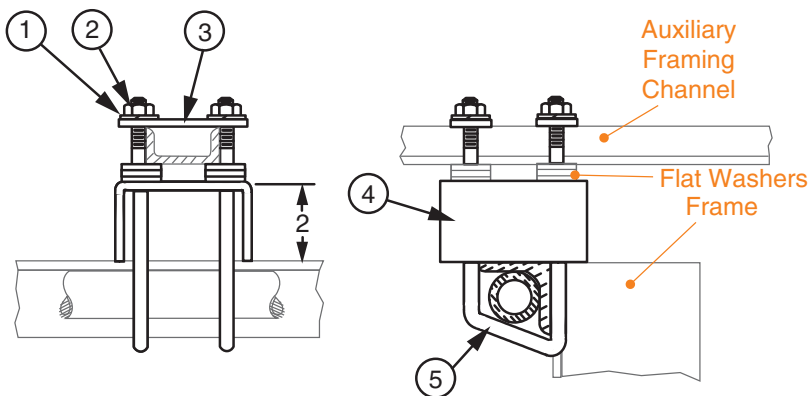
Item	QTY	Description
1	2	3/8 Lock Washer
2	4	Plate
3	4	3/8"-16 Nut
4	4	V-Bolt

**Notes:**

- Finish is zinc plated and gold chromate, finish code 10.
- Pipe not included; refer to 003037.
- Auxiliary Framing Channel not included; refer to 001002.

**FASTENING FRAME TOP ANGLE TO 2" X 1" X 3/16" AUX. CHANNEL WITH 2" SPACER**

Modified:06/13/2017



**Ordering Table**

**Part Number**

00101400xx

**Stock List**

Item	QTY	Description
1	4	3/8 Lock Washer
2	4	3/8-16 Nut
3	2	Plate
4	1	Channel Spacer
5	2	V-Bolt

**Notes:**

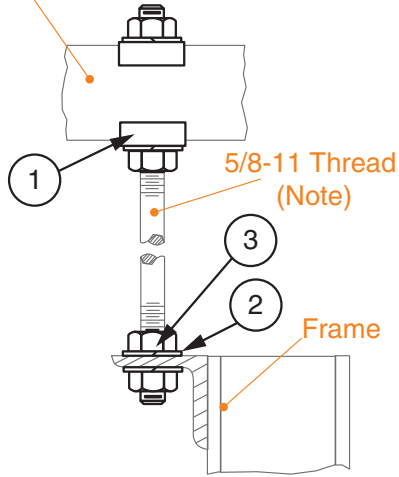
- XX = finish code; standard finish, XX = 30.
- Not included; refer to 0030160610.
- Not included; refer to 001002.
- Not included; refer to 003037.

**SUPPORTING FRAME FROM PARALLEL AUXILIARY FRAMING**

Modified:06/27/2014

A

**Auxiliary Framing (Note)**



**Ordering Table**

Part Number	Aux
00103200xx	Bar
00103201xx	Channel

**Stock List**

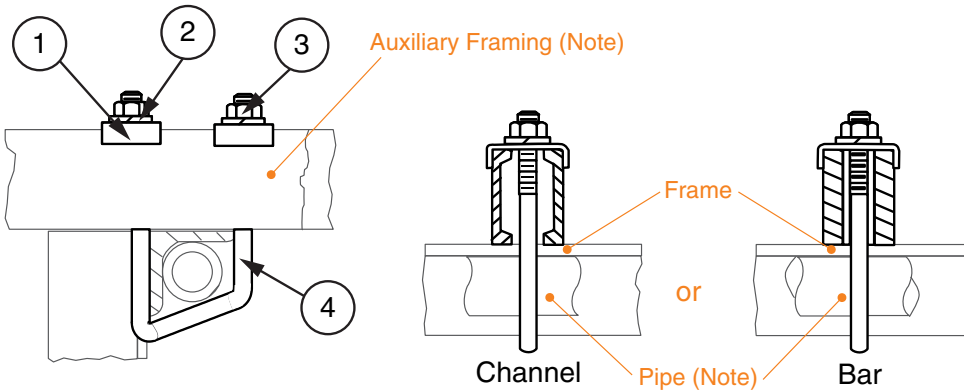
Item	QTY	Description
1	2	Clip
2	4	5/8 Lock Washer
3	4	5/8-11 Nut

**Notes:**

- Finish is zinc plated and gold chromate.
- Not included; refer to 001021 or 001022.
- Not included; refer to 003022.

**FASTENING FRAME TOP ANGLE TO PARALLEL AUXILIARY FRAMING**

Modified:06/27/2014



**Ordering Table**

Part Number	Aux
00103400xx	Bar
00103401xx	Channel

**Stock List**

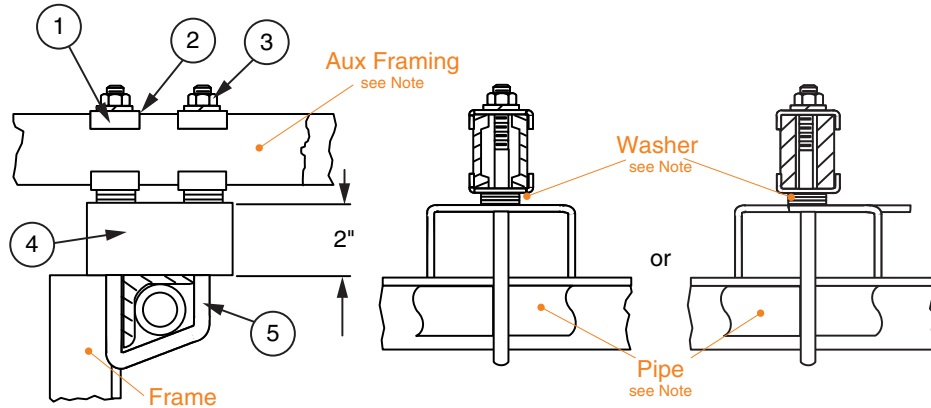
Item	QTY	Description
1	2	Clip
2	2	1/2 Lock Washer
3	2	1/2-13 Nut
4	1	V-Bolt

**Notes:**

- Finish is zinc plated and gold chromate, finish code 10.
- Not included; refer to 001021.
- Pipe not included; refer to 003037.

**FASTENING FRAME TOP ANGLE TO PARALLEL AUX. FRAMING WITH 2" SPACER**

Modified:06/27/2014



**Ordering Table**

Part Number	Aux
00103500xx	Bar
00103501xx	Channel

**Stock List**

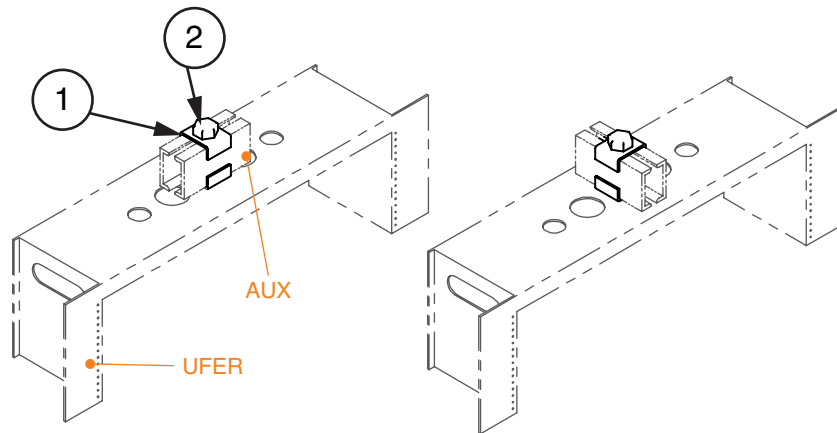
Item	QTY	Description
1	4	Clip
2	2	1/2 Lock Washer
3	2	1/2-13 Nut
4	1	Channel Spacer
5	1	V-Bolt

**Notes:**

- Finish is zinc plated and gold chromate, finish code 10.
- Not included; refer to 001021.
- Pipe not included; refer to 003037.
- Not included; refer to 00301607.

**ATTACH AUXILIARY FRAMING TO UFER**

Modified:06/27/2014



**Ordering Table**

Part Number	Aux
21960001xx	Bar
21960002xx	Channel

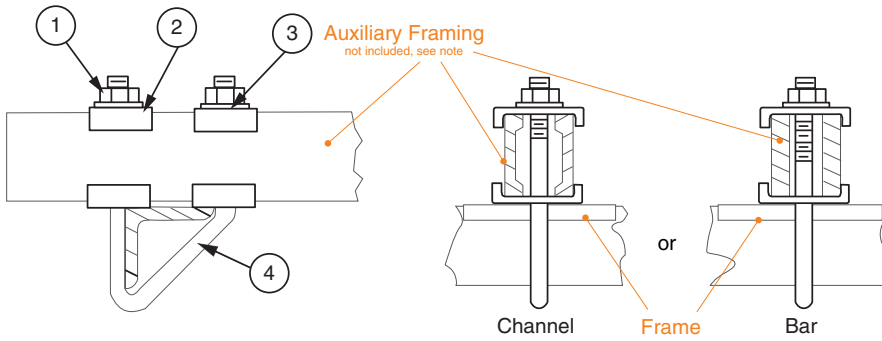
**Stock List**

Item	QTY	Description
1	2	Framing Clips
2	1	5/8-11 X 3/14" Hhcs

**SECURING FRAME TOP ANGLE TO PARALLEL AUXILIARY FRAMING**

Modified:06/27/2014

A



**Ordering Table**

Part Number	Aux
00103600xx	Bar
00103601xx	Channel

**Stock List**

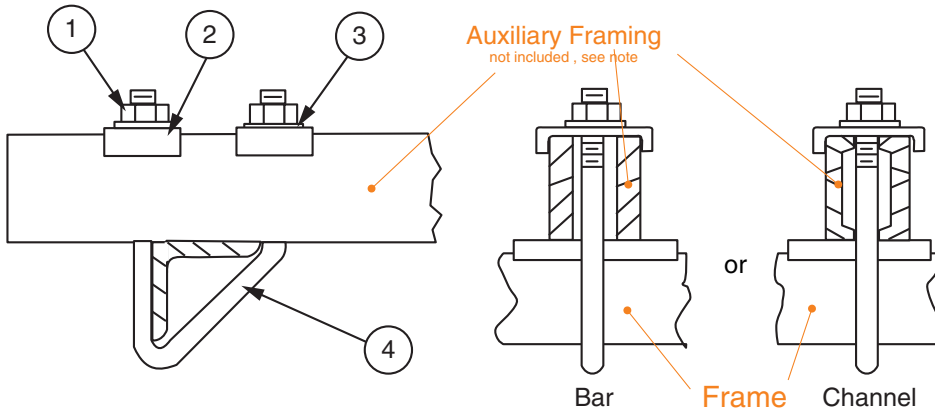
Item	QTY	Description
1	2	1/2"-13 Nut
2	4	Clip
3	2	1/2 Lock Washer
4	1	V-Bolt

**Notes:**

- Finish is zinc plated and gold chromate, finish code 10.
- Not included; refer to 001022.

**SECURING TOP ANGLE TO PARALLEL AUX. FRAMING WITH ALTERNATE ASSEMBLY**

Modified:06/27/2014



**Ordering Table**

Part Number	Aux
00103700xx	Bar
00103701xx	Channel

**Stock List**

Item	QTY	Description
1	2	1/2"-13 Nut
2	2	Clip
3	2	1/2" Lock Washer
4	1	V-Bolt

**Notes:**

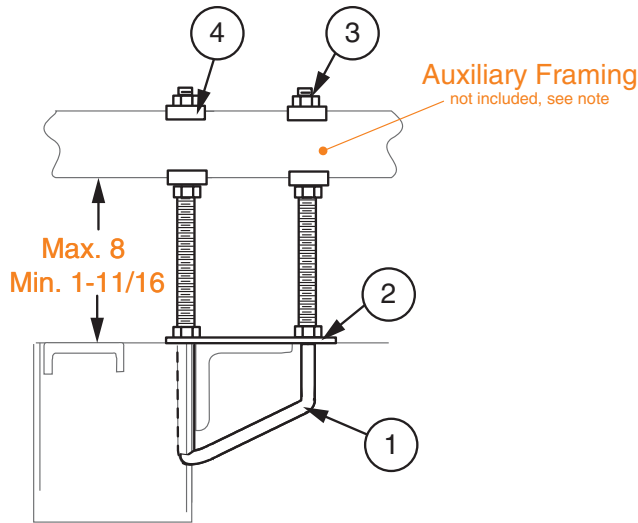
- Finish is zinc plated and gold chromate, finish code 10.
- Not included; refer to 001021.

A

**SUPPORTING PARALLEL AUXILIARY FRAMING FROM 2X2 TOP ANGLE**

Modified:06/27/2014

A



**Ordering Table**

Part Number	Aux
00105700xx	Bar
00105701xx	Channel

**Stock List**

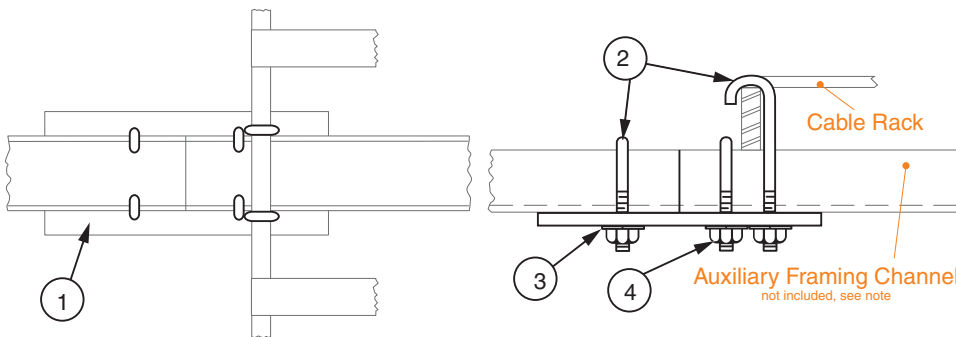
Item	QTY	Description
1	1	V-Bolt
2	1	Plate
3	6	5/8"-11 Hex Nut
4	4	Clip

**Notes:**

- Finish is zinc plated and gold chromate, XX = 10.
- Not included; refer to 001021 or 001022.

**SUPPORTING CABLE RACK OVER 2" X 1" X 3/16" AUX. CHANNEL SPLICE**

Modified:06/27/2014



**Ordering Table**

Part Number
00101700xx

**Stock List**

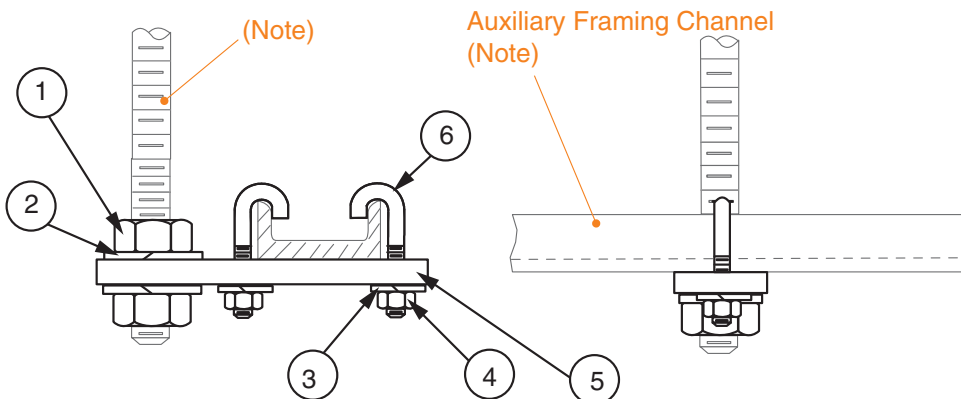
Item	QTY	Description
1	1	Junctioning Plate
2	6	J-Bolt
3	6	Spring Lock Washer
4	6	1/4-20 HHN

**Notes:**

- Finish is zinc plated and gold chromate, finish code 10.
- Not included; refer to 001002.

**SUPPORTING 2" X 1" X 3/16" AUX. CHANNEL WITH THREADED ROD**

Modified:07/17/2014



**Ordering Table**

Part Number
00101800xx

**Stock List**

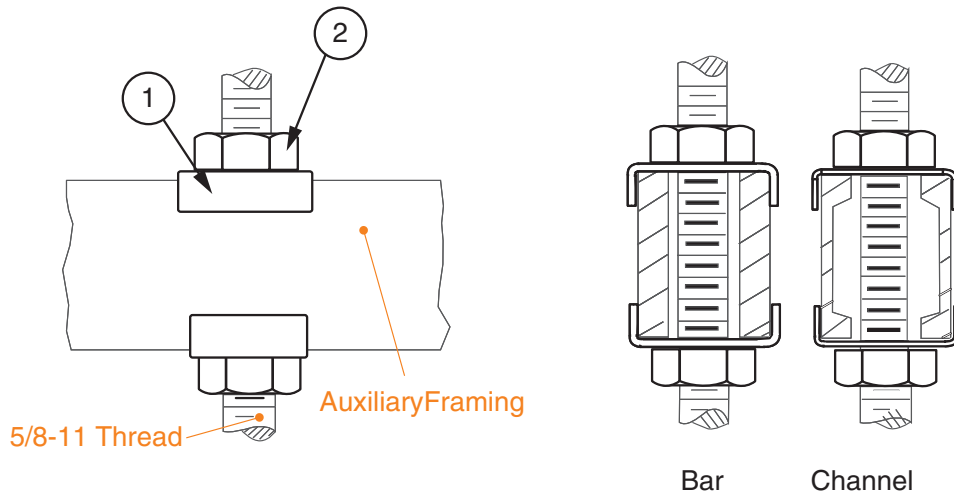
Item	QTY	Description
1	2	5/8 HHN
2	2	Spring Lock Washer
3	2	1/4 Lock Washer
4	1	1/4 Nut
5	1	Support Plate
6	2	J-Bolt

**Notes:**

- Finish is zinc plated and gold chromate, finish code 10.
- Not included; refer to 001002.
- Not included; refer to 003022.

**SUPPORTING PARALLEL AUX. FRAMING FROM THREADED ROD**

Modified:06/27/2014



**Ordering Table**

Part Number	Aux	type
00102500xx	Bar	Hole
00102501xx	Channel	Hole
21168000xx	Channel	Slot
21168001xx	Bar	Slot

**Stock List**

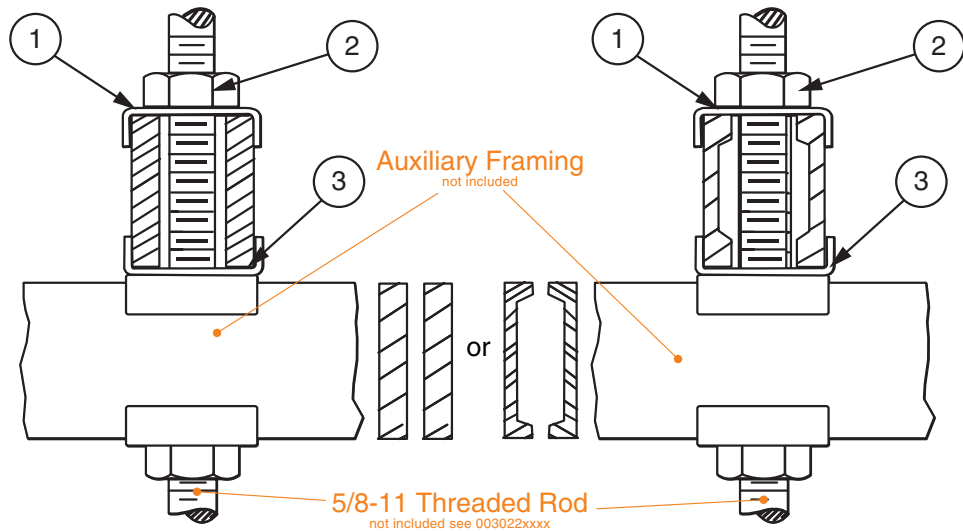
Item	QTY	Description
1	2	Clip
2	2	5/8-11 Nut

**Notes:**

- Finish is zinc plated and gold chromate.
- Not included; refer to 001021 or 001022.
- Not included; refer to 003022.
- For existing threaded rod installation use 211680 Series
- Split nut used on 211680 series.
- Refer to 003015 or 208017 for lock washers

**SUPPORTING PARALLEL AUX. FRAMING CROSS-OVER FROM THREADED ROD**

Modified:06/27/2014



**Ordering Table**

Part Number	Aux
00102600xx	Bar
00102601xx	Channel

**Stock List**

Item	QTY	Description
1	2	Clip
2	2	5/8"-11 Nut
3	1	Clip

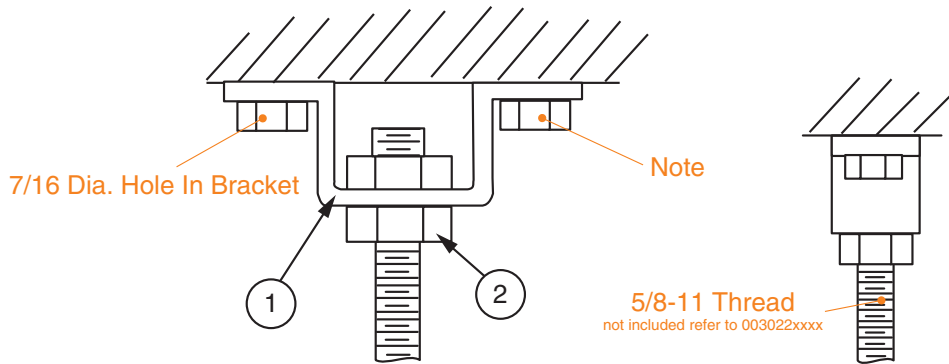
**Notes:**

- Finish is zinc plated and gold chromate, finish code 10.
- Aux Framing not included, refer to 001021xxxx or 001022xxxx.
- Threaded rod not included; refer to 003022.

**CEILING HANGER BRACKET**

Modified:06/30/2014

A



**Ordering Table**

**Part Number**

00104400xx

**Stock List**

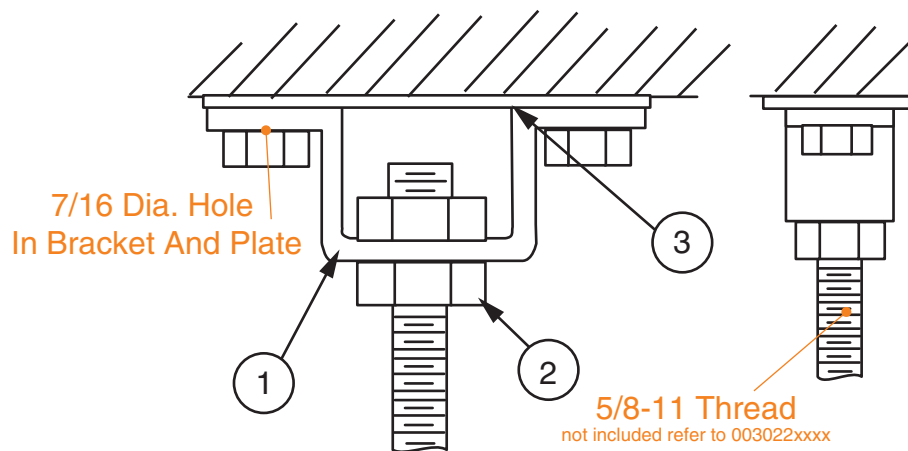
Item	QTY	Description
1	1	Bracket
2	2	5/8-11 Nut

**Notes:**

- XX = finish code; standard finish, XX = 30.
- Not included; refer to 003022.
- Not included; refer to hardware section for various options available.

**CEILING HANGER BRACKET WITH PLATE**

Modified:07/14/2014



**Ordering Table**

**Part Number**

00104500XX

**Stock List**

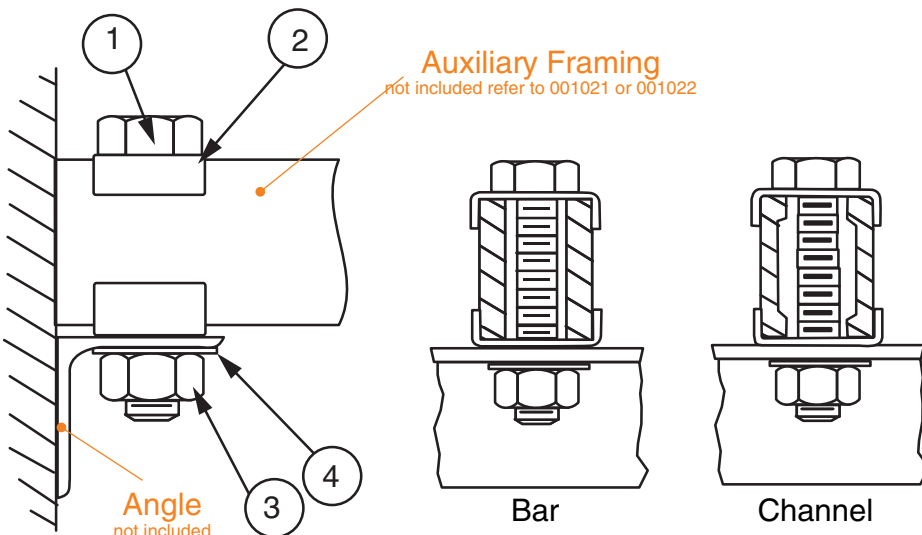
Item	QTY	Description
1	1	Bracket
2	2	5/8-11 Nut
3	1	Plate

**Notes:**

- XX = finish code; standard finish, XX = 30.
- Not included; refer to 003022.
- Not included; refer to hardware section for various options available.

**MOUNTING PARALLEL AUXILIARY FRAMING TO WALL ANGLE**

Modified:06/30/2014



**Ordering Table**

**Part Number**

**Aux**

00102700xx

Bar

00102701xx

Channel

**Stock List**

Item	QTY	Description
1	1	1/2"-13 X 3." HHCS
2	2	Clip
3	1	1/2-13 Nut
4	1	1/2 Lock Washer

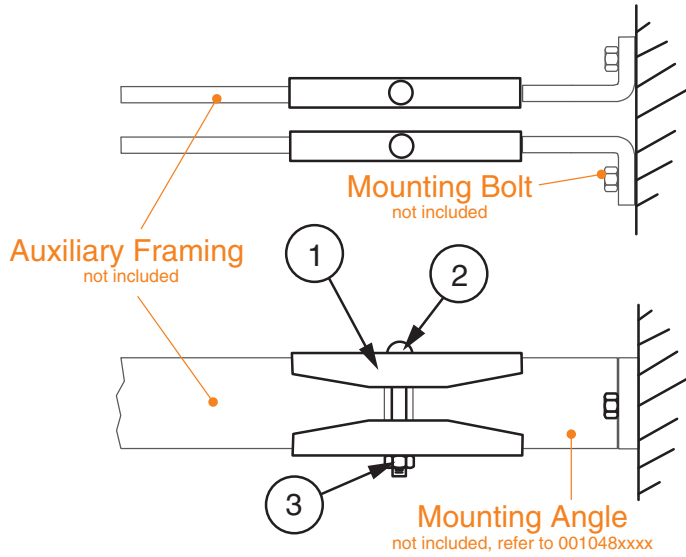
**Notes:**

- Finish is zinc plated and gold chromate.
- Not included; refer to 001021 or 001022.
- Not included; refer to hardware section for various wall angles available.



**JUNCTIONING PARALLEL AUXILIARY FRAMING BAR AT WALL**

Modified:07/14/2014



**Ordering Table**

**Part Number**

00103300xx

**Stock List**

Item	QTY	Description
1	4	Splice Clamp
2	2	3/8"-16 X 2-3/4" Bolt
3	2	3/8"-16 Nut

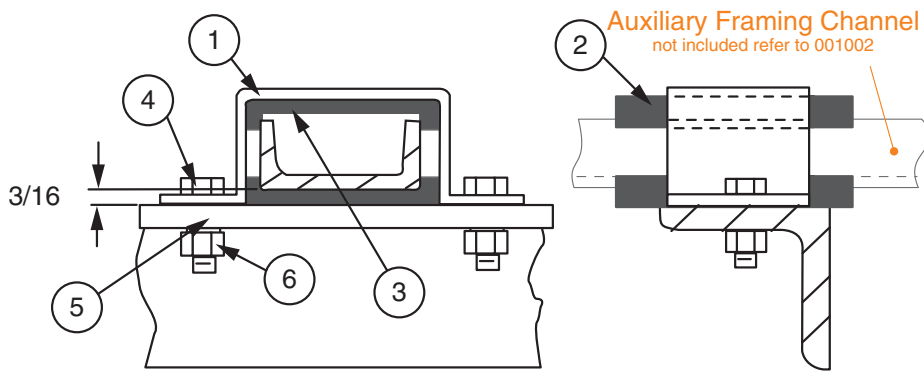
**Notes:**

- Finish is zinc plated and gold chromate, finish code 10.
- Auxiliary Framing Bar refer to 001021xxxx.
- WallMount Angles not included; refer to 001048xxxx
- Mounting Bolts not included; refer to hardware section for various options. available.

A

**INSULATING AUXILIARY FRAMING CHANNEL FROM TOP ANGLE OR WALL ANGLE**

Modified:07/14/2014



**Ordering Table**

**Part Number**

00105300xx

**Stock List**

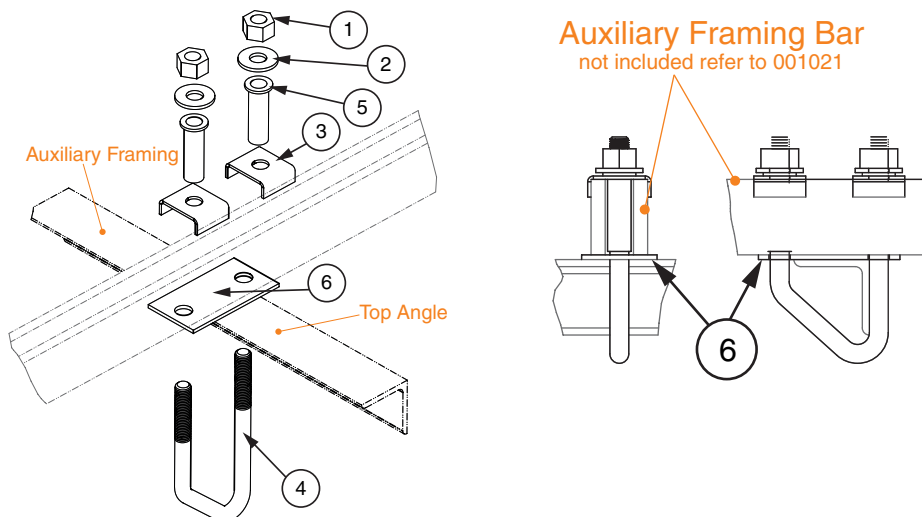
Item	QTY	Description
1	1	Bracket
2	2	Insulator -- see note
3	1	Shim Plate
4	2	3/8"-16 X 7/8" HHCS
5	2	3/8" Lock Washer
6	2	3/8"-16 Hex Nut

**Notes:**

- Finish is zinc plated and gold chromate, finish code 10.
- Insulator material is rated U.L. 94 V-1 and has an oxygen index rating of greater than 29.

**V-BOLT TOP ANGLE ISOLATION KIT**

Modified:07/14/2014



**Ordering Table**

Part Number	Aux	Top Angle
2194920100	2" x 3/8"	2" x 2"
2194920200	2" x 9/16"	2" x 2"

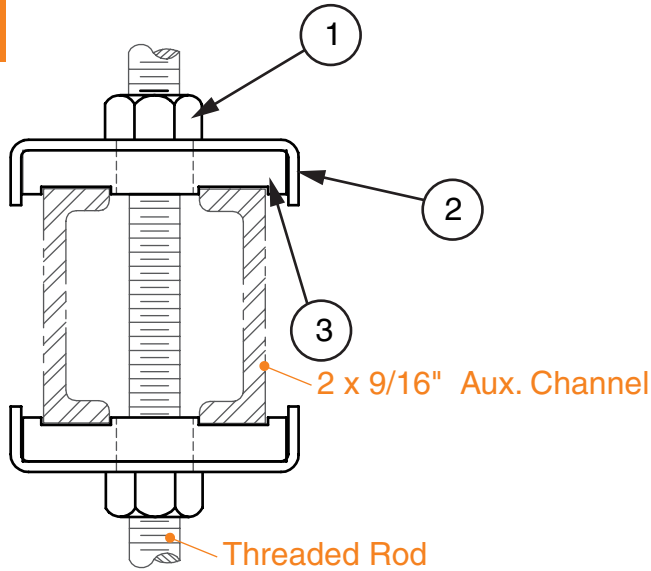
**Stock List**

Item	QTY	Description
1	2	1/2-13 Heavy Hex Nut
2	2	1/2 Washer
3	2	Framing Clip
4	1	V-Bolt
5	2	Isolation Sleeve 1/2 Dia.
6	1	V-Bolt Isolation Pad

**INSULATING AUXILLIARY FRAMING CHANNEL**

Modified:07/17/2014

A



**Ordering Table**

**Part Number**

2108970110

**Stock List**

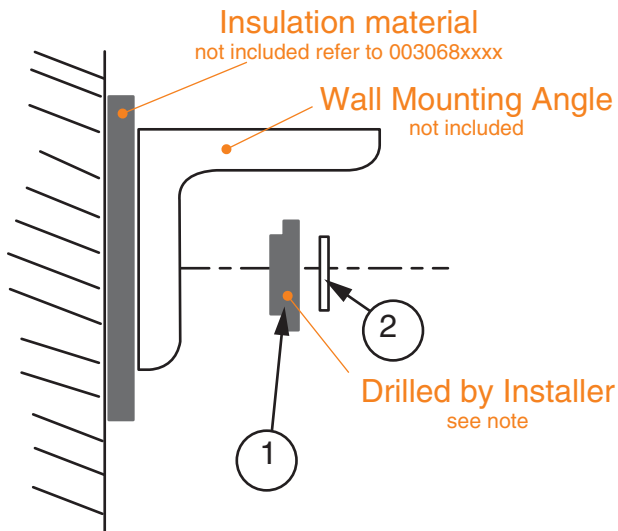
Item	QTY	Description
1	2	5/8"-11 Hex Nut
2	2	Clip
3	2	Insulator

**Notes**

1. 5/8" Threaded Rod and 2" x 9/16" Aux channel Not included.

**BUSHING FOR INSULATING WALL MOUNTING ANGLE**

Modified:07/14/2014



**Ordering Table**

**Part Number**

00105600xx

**Stock List**

Item	QTY	Description
1	1	Bushing
2	1	3/8" Flat Washer

**Notes:**

- Finish is zinc plated and gold chromate, finish code 10.
- Insulation material is not included see to 003068xxxx.
- Insulator material is rated U.L. 94 V-1 and has an oxygen index rating of greater than 29.
- Wall Angle not included, refer to hardware section for options available.
- Bushing requires 3/4" Dia. Hole, drilled by user.

**INSULATING PARALLEL AUXILIARY FRAMING BAR FROM TOP ANGLE OR WALL ANGLE**

Modified:08/07/2015

A

**Ordering Table**

**Part Number**

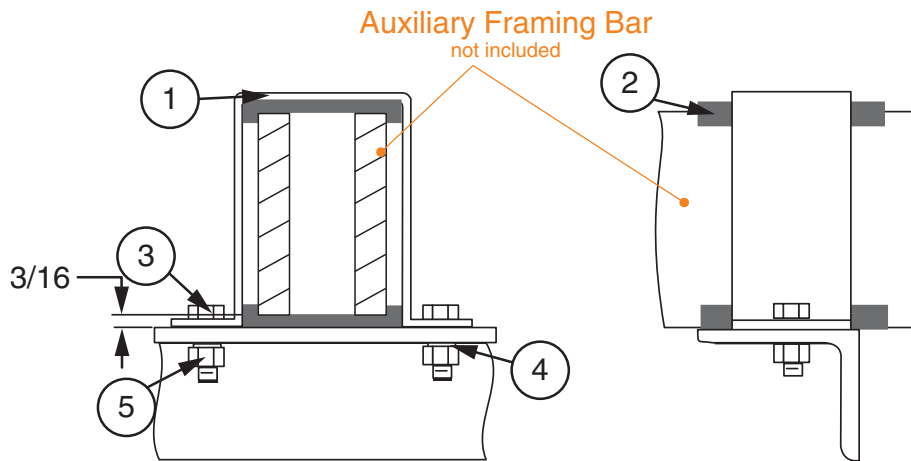
00105400xx

**Stock List**

Item	QTY	Description
1	1	Bracket
2	2	Insulator -- <i>see note</i>
3	2	3/8"-16 X 7/8" HHCS
4	2	3/8" Lock Washer
5	2	3/8"-16 Hex Nut

**Notes:**

- Finish is zinc plated and gold chromate, finish code 10.
- Insulator material is rated U.L. 94 V-1 and has an oxygen index rating of greater than 29.
- Not included; refer to 001021.



**INSULATING PARALLEL AUX. FRAMING CHANNEL FROM TOP ANGLE OR WALL ANGLE**

**Ordering Table**

**Part Number**

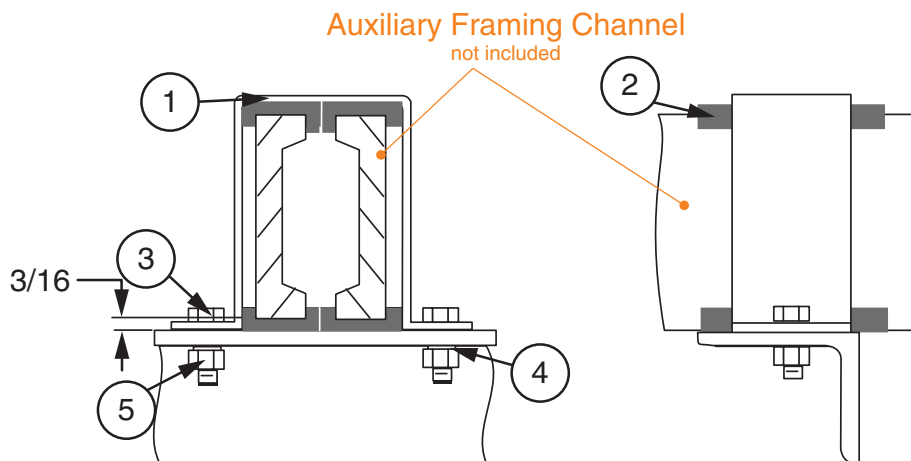
00105401xx

**Stock List**

Item	QTY	Description
1	1	Bracket
2	4	Insulator -- <i>see note</i>
3	2	3/8"-16 X 7/8" HHCS
4	2	3/8" Lock Washer
5	2	3/8"-16 Hex Nut

**Notes:**

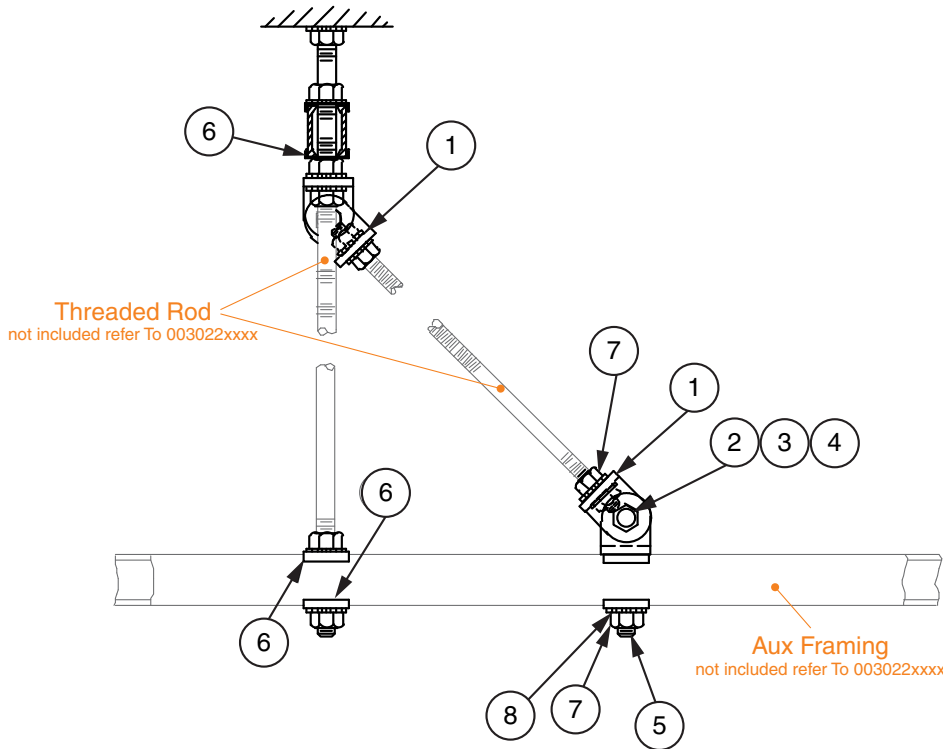
- Finish is zinc plated and gold chromate, finish code 10.
- Insulator material is rated U.L. 94 V-1 and has an oxygen index rating of greater than 29.
- Not included; refer to 001022.



**BRACING LOWER FRAMING AT RIGHT ANGLE**

Modified:07/14/2014

A



**Ordering Table**

**Part Number**

21404001xx

**Stock List**

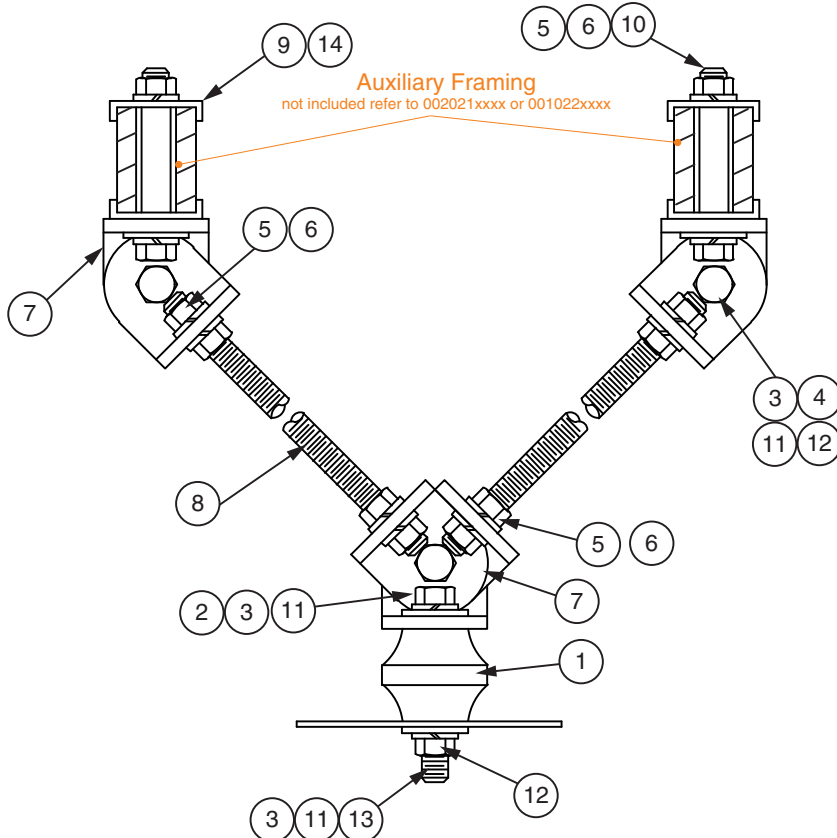
Item	QTY	Description
1	4	Bracket
2	2	1/2"-13 X 1-1/4" HHCS
3	2	1/2"-13 Nut
4	2	1/2" Int. Lock Washer
5	1	5/8"-11 X 3-1/4" HHCS
6	6	Clip
7	11	5/8"-11 Nut
8	11	5/8" Int. Lock Washer

**Notes:**

- Finish is zinc plated and gold chromate, finish code 10.

**BRACING ASSEMBLY, INSULATED**

Modified:07/14/2014



**Ordering Table**

**Part Number**

21060400xx

**Stock List**

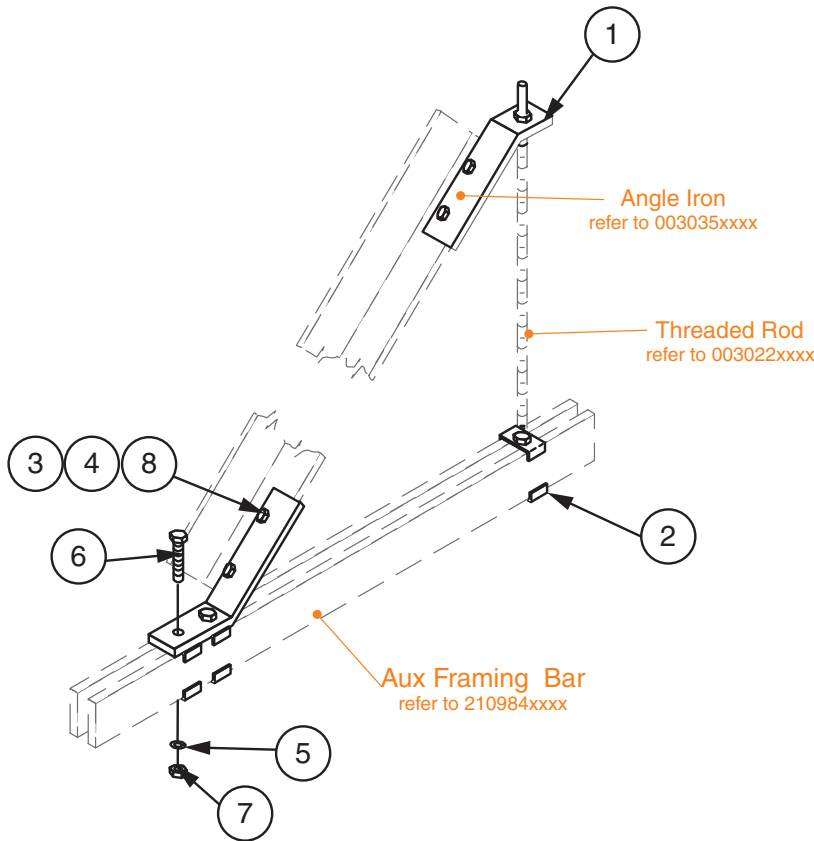
Item	QTY	Description
1	1	Insulator
2	1	1/2-13 X 1" HHCS
3	5	1/2 Lock Washer
4	3	1/2-13 X 2" HHCS
5	10	5/8 Lock Washer
6	10	5/8-11 Hex Nut
7	7	Bracket
8	2	5/8-11 X 48" Threaded Rod
9	4	Framing Clip
10	2	5/8-11 X 3 HHCS
11	5	1/2 Flat Washer
12	4	1/2 Hex Nut
13	1	1/2-13 X 4" Threaded Rod
14	4	1-7/8" Framing Clip

**Notes:**

- Finish is zinc plated and gold chromate, finish code 10.
- Insulator material is rated U.L. 94 V-1 and has an oxygen index rating of greater than 29.

**BRACING KITS, FRAMING BAR & CHANNEL**

Modified:07/17/2014



**Ordering Table**

Part Number	Aux
21090500xx	Bar
21567100xx	Channel

**Stock List**

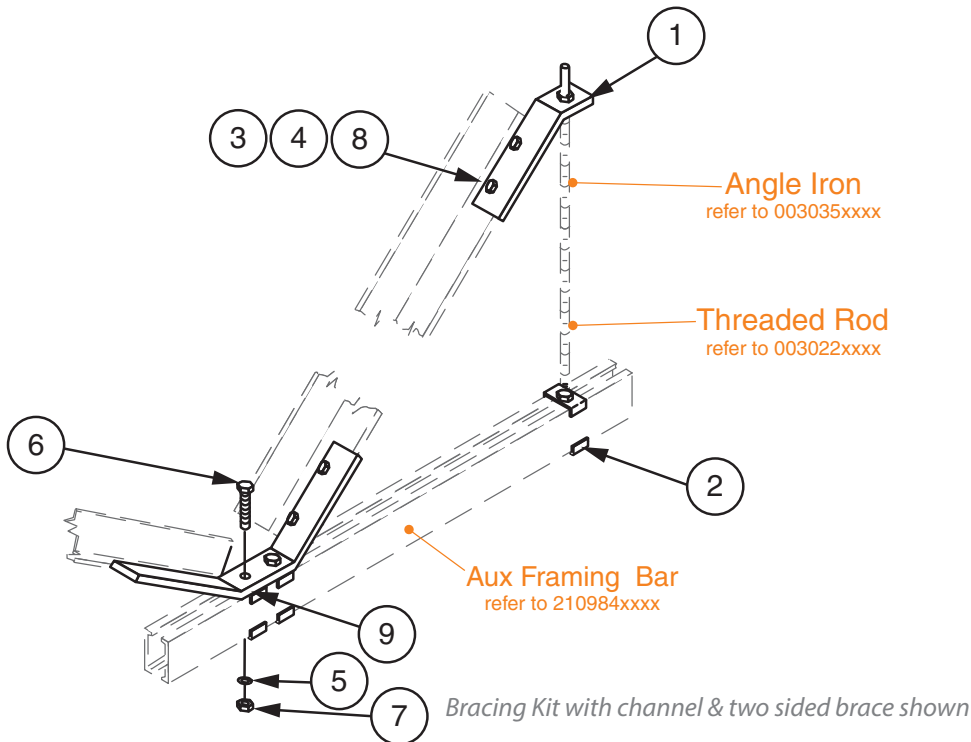
Item	QTY	Description
1	2	Bracket
2	6	Clip
3	4	1/2"-13 HHCS
4	4	1/2" External Tooth Lockwasher
5	4	5/8" External Tooth Lockwasher
6	2	5/8"-13 HHCS
7	6	5/8" Hex Nut
8	4	1/2" Nut

**Notes:**

- "xx" in part number represents finish code

**2 SIDED BRACING KITS, FRAMING BAR & CHANNEL**

Modified:07/15/2014



**Ordering Table**

Part Number	Aux
21566800xx	Bar
21560800xx	Channel

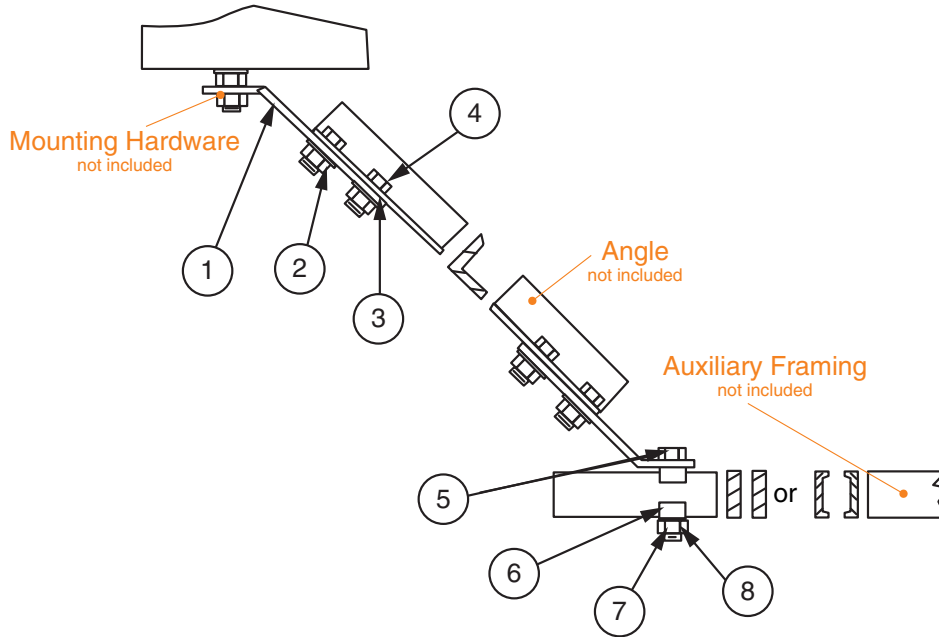
**Stock List**

Item	QTY	Description
1	2	Bracket
2	8	Framing Clip
3	8	1/2"-13 HHCS
4	8	1/2" External Tooth Lockwasher
5	6	5/8" External Tooth Lockwasher
6	2	5/8"-11 HHCS
7	10	5/8" Hex Nut
8	8	1/2" Nut
9	1	Two Sided Brace

**BRACING PARALLEL AUXILIARY FRAMING WITH ANGLE FROM CEILING**

Modified:07/17/2014

A



**Ordering Table**

Part Number	Aux
00103800xx	Bar
00103801xx	Channel

**Stock List**

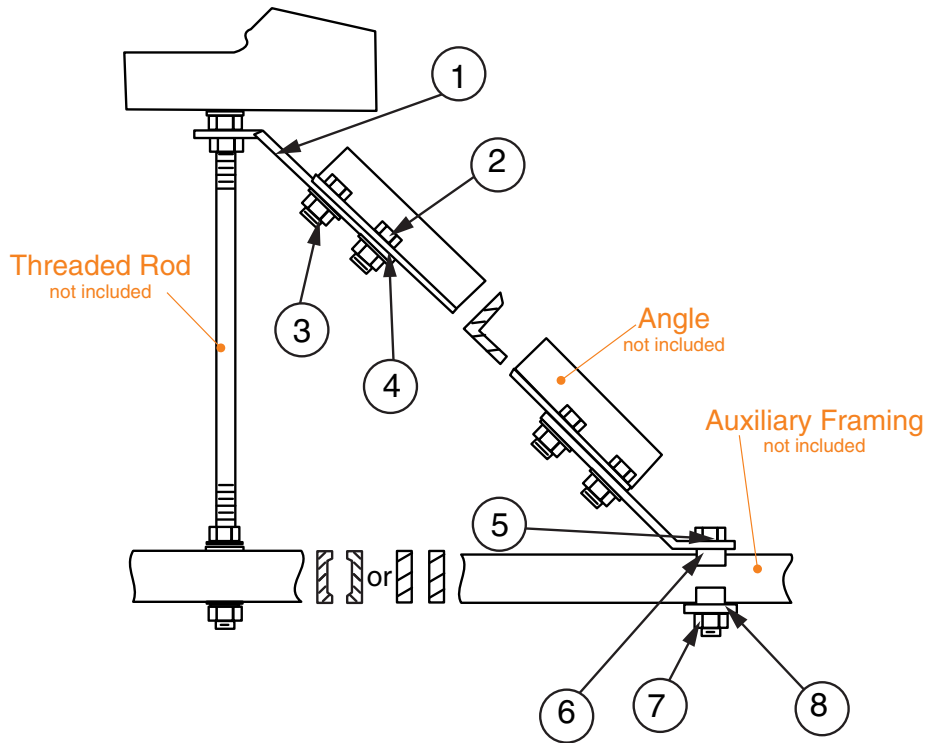
Item	QTY	Description
1	2	Brace
2	4	1/2-13 Nut
3	4	1/2 Lock Washer
4	4	1/2-13 X 1-1/4 HHCS
5	1	5/8-11 X 3-1/4 HHCS
6	2	Clip
7	1	5/8-11
8	1	5/8 Lock Washer

**Notes:**

- XX = finish code; standard finish, XX = 30.
- Not included; refer to 001021xxxx or 001022xxxx.
- Not included; refer to 00303xxxx holes drilled in angle by installer.
- Not included; refer to hardware section for various options available.

**SUPPORTING AND BRACING PARALLEL AUXILIARY FRAMING FROM CEILING**

Modified:07/17/2014



**Ordering Table**

Part Number	Aux
00103900xx	Bar
00103901xx	Channel

**Stock List**

Item	QTY	Description
1	2	Brace
2	4	1/2"-13 X 1-1/4" HHCS
3	4	1/2"-13 Nut
4	4	1/2" Lock Washer
5	1	5/8"-11 X 3-3/4" HHCS
6	4	Clip
7	5	5/8"-11 Nut
8	3	5/8"- Lock Washer

**Notes:**

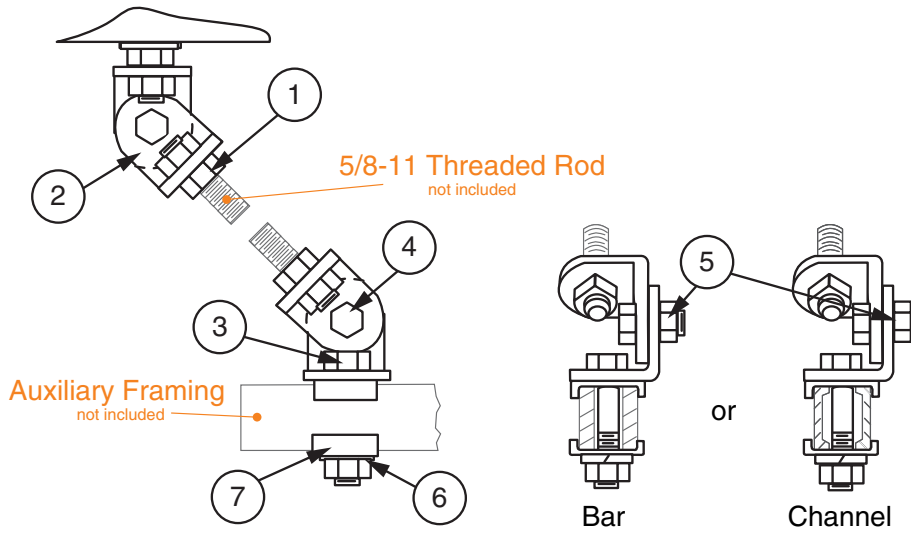
- XX = finish code; standard finish, XX = 30.
- Auxiliary framing not included; refer to 001021xxxx or 001022xxxx.
- Mounting hardware not included; refer to 003022xxxx.
- Angles not included; refer to 003034xxxx.
- Holes drilled in angle by installer.

A

**BRACING PARALLEL AUXILIARY FRAMING FROM CEILING OR WALL**

Modified:07/01/2014

A



**Ordering Table**

Part Number	Aux
00104000xx	Bar
00104001xx	Channel

**Stock List**

Item	QTY	Description
1	5	5/8"-11 Nut
2	4	Bracket
3	1	5/8"-11 X 3-1/4" HHCS
4	2	1/2"-13 X 1-1/4" HHCS
5	2	1/2"-13 Nut
6	1	5/8 Lock Washer
7	2	Clip

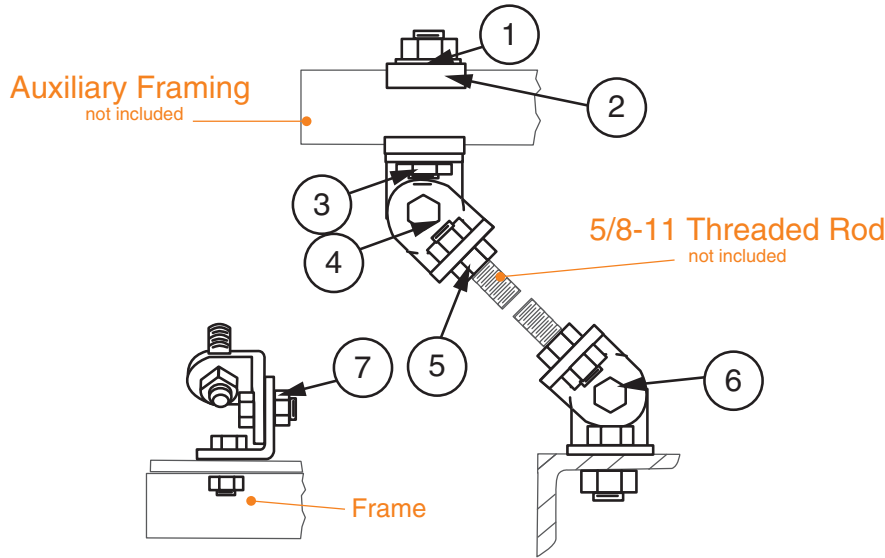
**Notes:**

- Finish is zinc plated and gold chromate, finish code 10.
- Aux framing not included; refer to 001021 or 001002.
- Threaded Rod not included; refer to 003022.



**BRACING FRAME FROM PARALLEL AUXILIARY FRAMING**

Modified:07/01/2014



**Ordering Table**

Part Number	Aux
00104100xx	Bar
00104101xx	Channel

**Stock List**

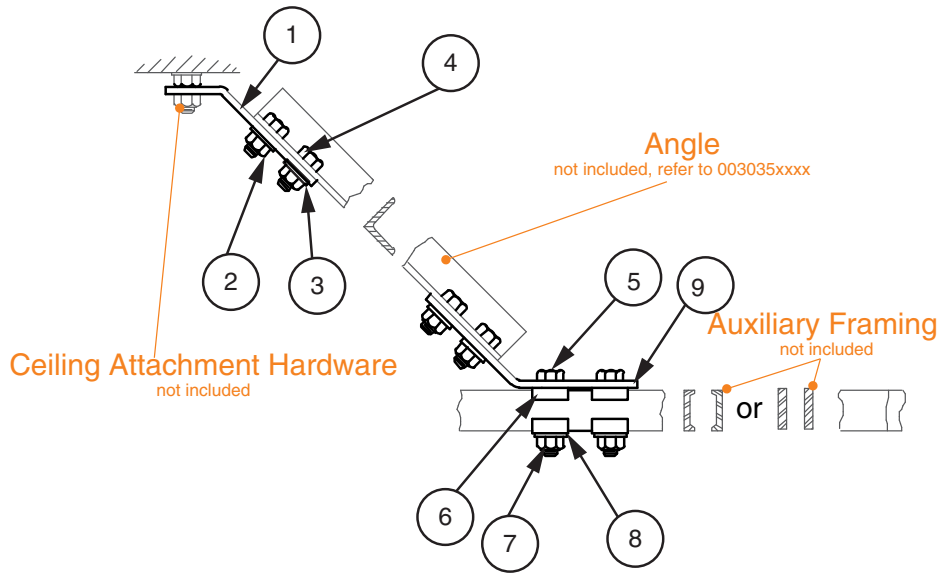
Item	QTY	Description
1	1	5/8 Lock Washer
2	2	Clip
3	1	5/8-11 HHCS
4	4	Bracket
5	5	5/8-11 Nut
6	3	1/2"-13 HHCS
7	3	1/2-13 Nut

**Notes:**

- Finish is zinc plated and gold chromate.
- Not included; refer to 001021 or 001022.
- Not included; refer to 003022.

**BRACING OF PARALLEL AUXILIARY FROM CEILING**

Modified:07/01/2014



**Ordering Table**

Part Number	Aux
21090400xx	Bar
21090401xx	Channel

**Stock List**

Item	QTY	Description
1	1	Brace
2	4	1/2"-13 Nut
3	4	Lock Washer
4	4	1/2"-13 X 1-1/4" HHCS
5	2	5/8"-11 X 3-1/2" HHCS
6	4	Clip
7	2	5/8"-11 Nut
8	2	Lock Washer
9	1	Brace

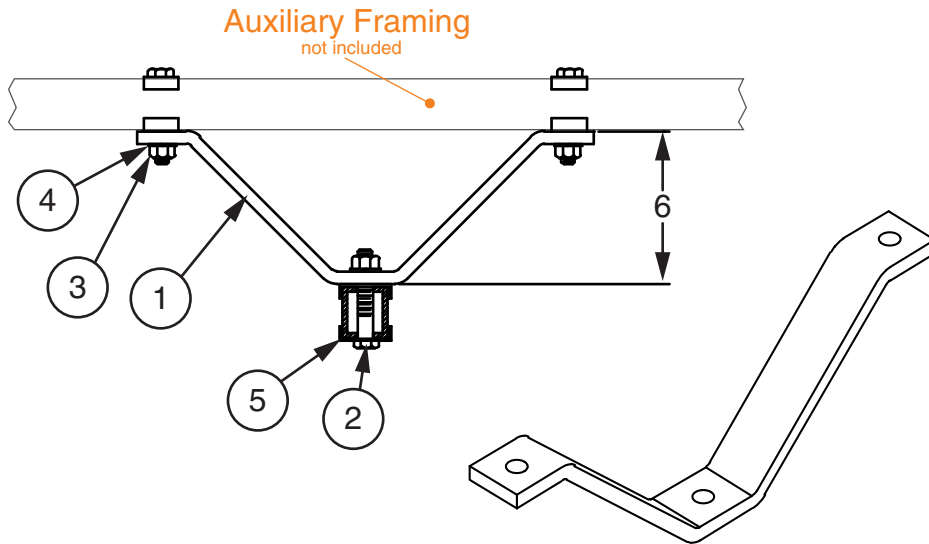
**Notes:**

- XX = finish code; standard finish, XX = 30.
- Holes drilled in angle by installer.
- Ceiling attachment hardware not included.
- Not included; refer to 001021-001022.

**SUPPORT BRACKET BRACING KIT**

Modified:07/01/2014

A



**Ordering Table**

**Part Number**

21314200xx

**Stock List**

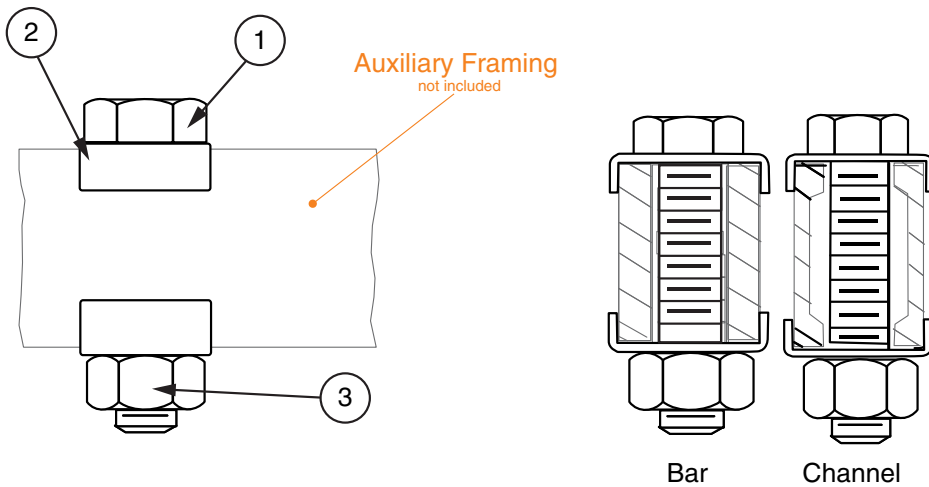
Item	QTY	Description
1	1	Bracket
2	3	5/8"-11 X 3-1/2" HHCS
3	3	5/8-11 Hex Nut
4	3	5/8-11 Lock Washer
5	6	Framing Clip

**Notes:**

- XX = finish code; standard finish, XX = 30.

**PARALLEL AUXILIARY FRAMING FINISHING CLIP**

Modified:07/17/2014



**Ordering Table**

Part Number	Aux
00102800xx	Bar
00102801xx	Channel

**Stock List**

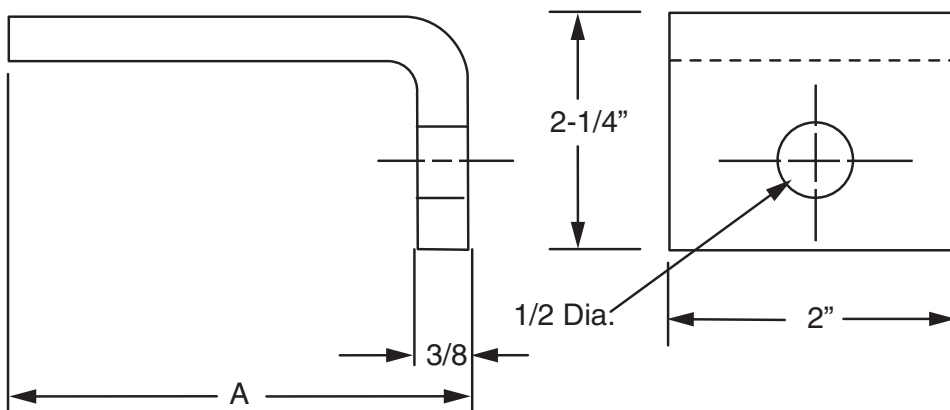
Item	QTY	Description
1	2	1/2-13 X 2-3/4" HHCS
2	2	Clip
3	1	1/2-13 Nut

**Notes:**

- Finish is zinc plated and gold chromate.
- Not included; refer to 001021 or 001022.

**AUXILIARY PARALLEL FRAMING BAR, MOUNTING ANGLE**

Modified:07/17/2014



**Ordering Table**

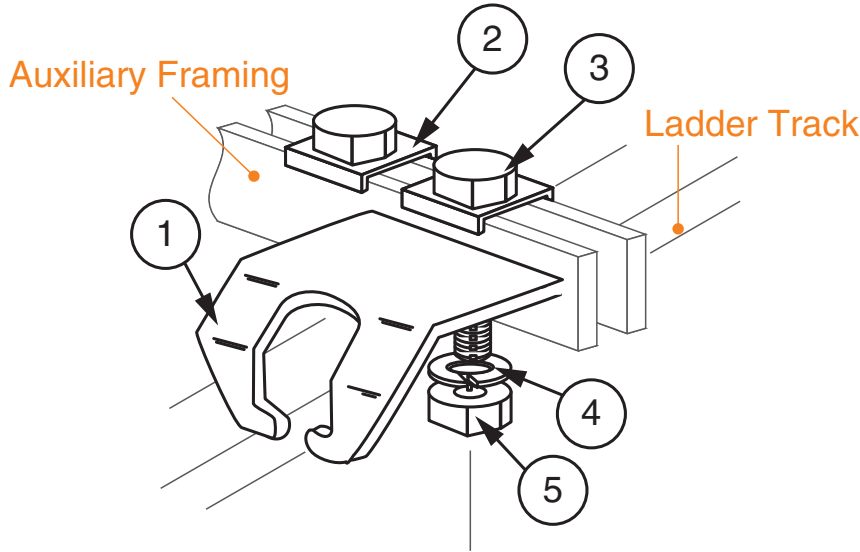
Part Number	A
00104801xx	3-1/2"
00104802xx	6"
00104803xx	12"

**Notes:**

- XX = finish code; standard finish, XX = 30.

**LADDER TRACK BRACKET ASSEMBLY FOR PARALLEL AUXILIARY FRAMING**

Modified:07/17/2014



**Ordering Table**

Part Number	Aux
00104900xx	Bar
00104901xx	Channel

**Stock List**

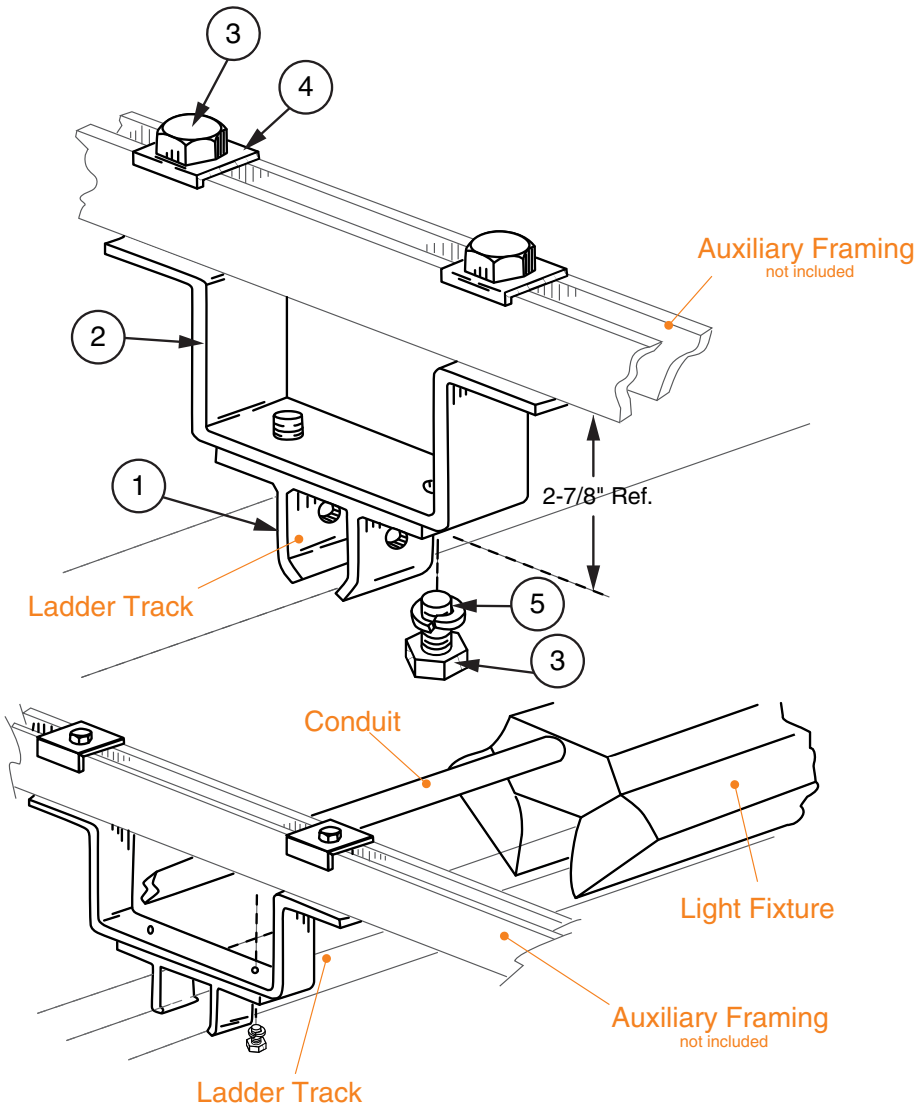
Item	QTY	Description
1	1	Ladder Bracket
2	2	Clip
3	2	5/8"-11 X 3-1/2" HHCS
4	2	5/8" Lock Washer
5	2	5/8"-11 Hex Nut

**Notes:**

- XX = finish code; standard finish, XX = 30.
- Not included; refer to 001021 or 001022.

**LADDER HANGER BRACKET USED WITH STACKLITER LIGHT FIXTURE**

Modified:07/01/2014



**Ordering Table**

Part Number
00105200xx

**Stock List**

Item	QTY	Description
1	1	Ladder Bracket
2	1	Mounting Bracket
3	4	3/8-16 X 3/4" HHCS
4	2	Framing Clip
5	2	Spring Lock Washer
6	2	3/8-16 X 2-1/2" HHCS

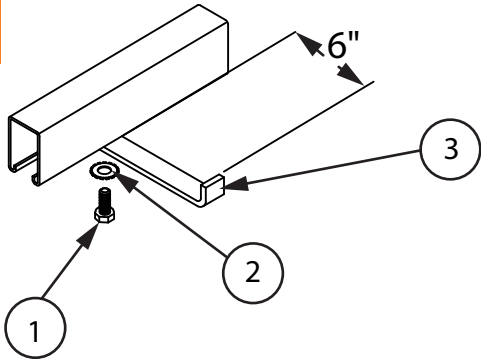
**Notes:**

- XX = finish code; standard finish, XX = 30.
- Not included; refer to 001021 or 001022.

**CABLE SUPPORT BRACKET KIT FOR STRUT**

Modified:06/30/2014

A



**Ordering Table**

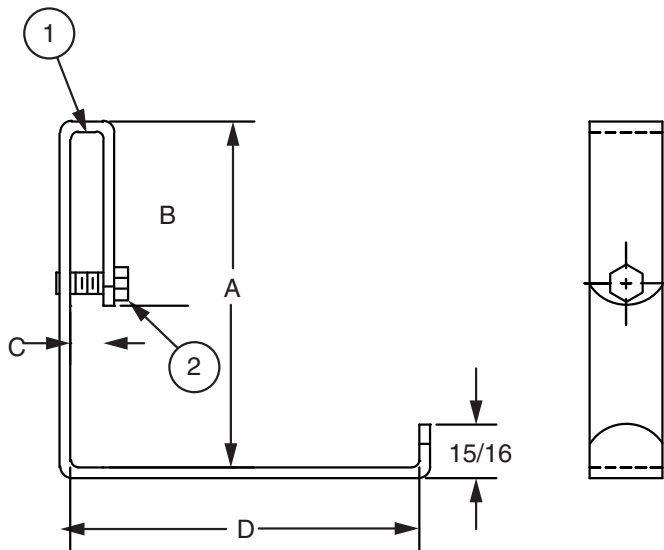
Part Number	Material Thickness
22152400xx	1/8"
22152401xx	3/16"

**Stock List**

Item	QTY	Description
1	1	1/2"-13 X 1-1/2" HHCS
2	1	1/2" External Tooth Lock Washer
3	1	Cable Support Bracket

**POWER CABLE BRACKET FOR AUXILIARY FRAMING CHANNEL**

Modified:06/30/2014



**Ordering Table**

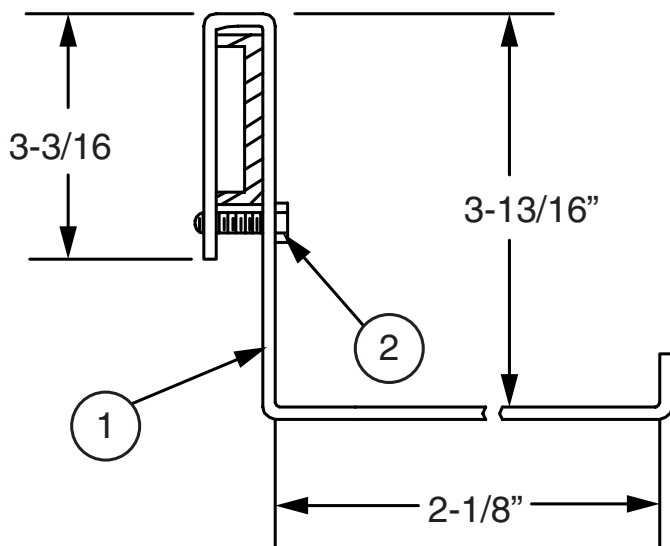
Part Number	A	B	C	D
21052901xx	6"	3-3/16"	9/16"	3-1/2"
21052902xx	6"	3-3/16"	9/16"	6"

**Stock List**

Item	QTY	Description
1	1	Cable Bracket
2	1	3/8-16 Hex Nut

**POWER CABLE BRACKET FOR AUXILIARY FRAMING CHANNELS**

Modified:10/12/2016



**Ordering Table**

Part Number
21286501xx

**Stock List**

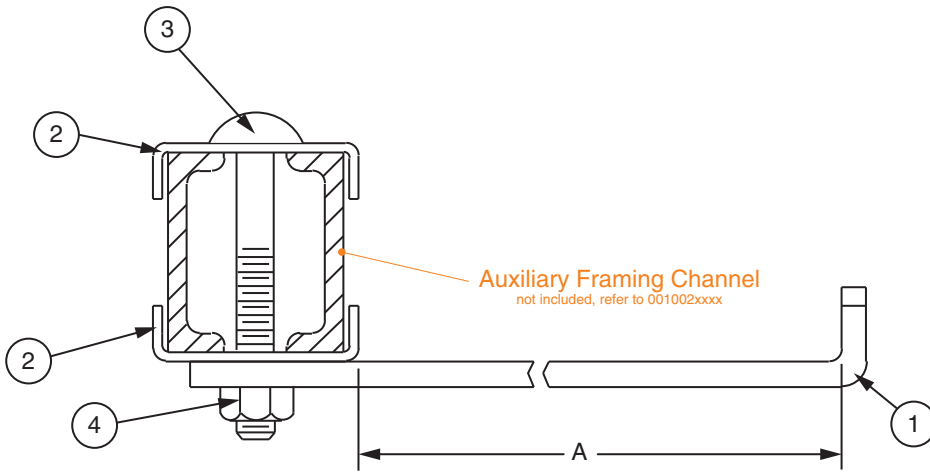
Item	QTY	Description
1	1	Bracket
2	1	3/8-16 HHCS

**Notes**

- xx = finish code; standard finish xx= 30.

**POWER CABLE BRACKET ATTACHED TO PARALLEL AUXILIARY FRAMING CHANNEL**

Modified:06/30/2014



**Ordering Table**

Part Number	A
21005000xx	8"
21005001xx	5"

**Stock List**

Item	QTY	Description
1	1	Cable Bracket
2	2	Clip
3	1	Carriage Bolt
4	1	3/8-16 Hex Nut

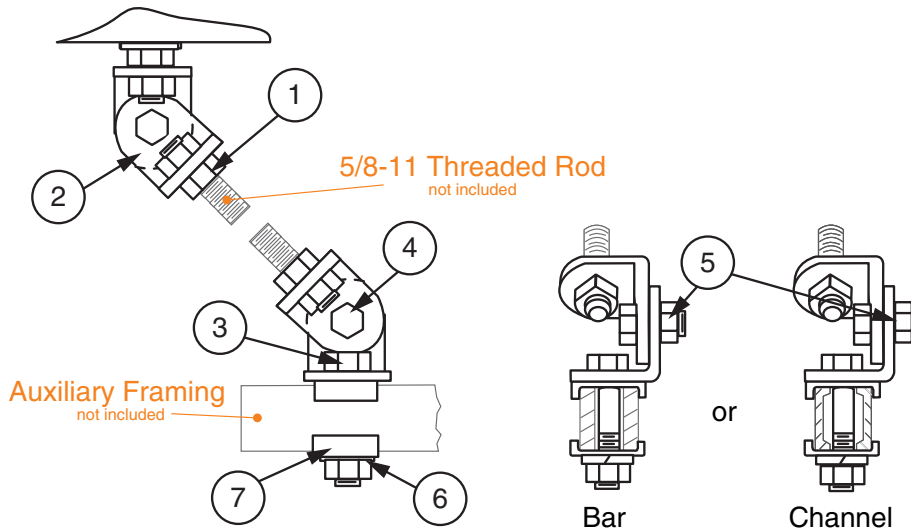
**Notes:**

- XX = finish code; standard finish, XX = 30.
- Mounting hardware finish is zinc plated with gold chromate.

A

**BRACING PARALLEL AUXILIARY FRAMING FROM CEILING OR WALL**

Modified:07/01/2014



**Ordering Table**

Part Number	Aux
00104000xx	Bar
00104001xx	Channel

**Stock List**

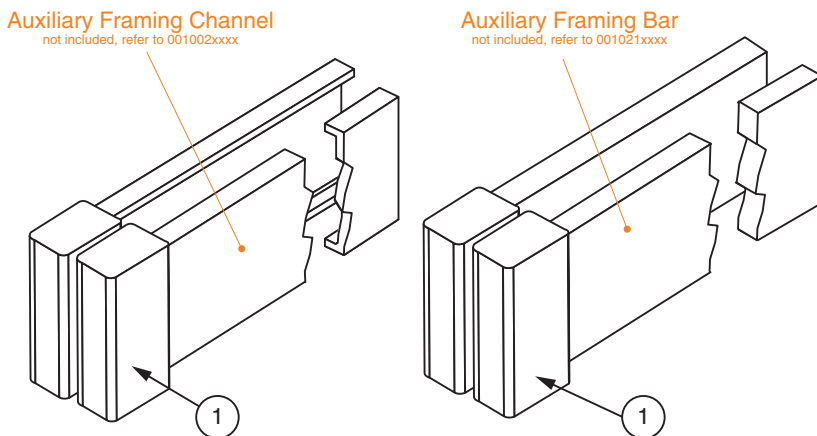
Item	QTY	Description
1	5	5/8"-11 Nut
2	4	Bracket
3	1	5/8"-11 X 3-1/4" HHCS
4	2	1/2"-13 X 1-1/4" HHCS
5	2	1/2"-13 Nut
6	1	5/8 Lock Washer
7	2	Clip

**Notes:**

- Finish is zinc plated and gold chromate, finish code 10.
- Aux framing not included; refer to 001021 or 001002.
- Threaded Rod not included; refer to 003022.

**RUBBER FINISHING CAP FOR AUXILIARY FRAMING**

Modified:04/22/2020



**Ordering Table**

Part Number	Aux
0010580000	Bar
0010580100	Channel

**Stock List**

Item	QTY	Description
1	2	Rubber End Caps

**Notes:**

- Material is ABS black rubber, 50 durometer.
- Not included; refer to 001021 or 001022.

NOTES: