

**MOUNTING SCREW 12-24 X 1/2" COMBO HEAD**

Modified:06/27/2011



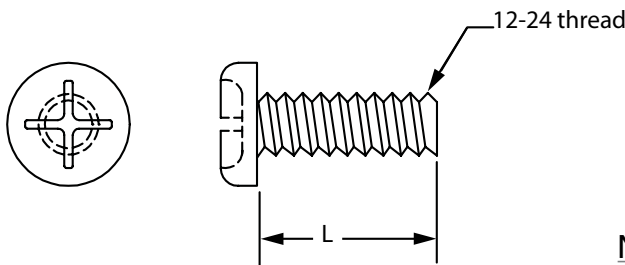
**Notes:**

- bag of 50
- clear zinc finish

Part Number	
Ordering	2192640211

**12-24 PHILIPS HEAD MACHINE SCREW**

Modified:02/08/2012



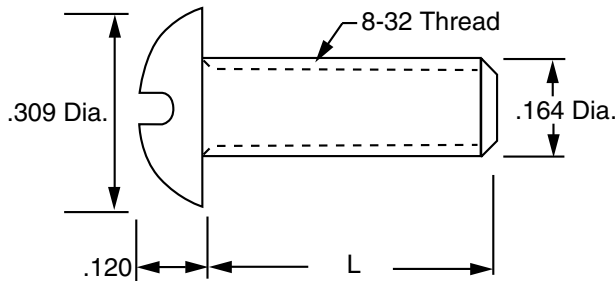
**Notes:**

- Standard Finish Is Stainless Steel.

part number		L
Ordering Table	0030040112	3/8"
	0030040212	7/16"
	0030040312	1/2"
	0030040412	5/8"
	0030040512	3/4"
	0030040612	1"
	2023810712	1/4"
	2023810812	5/16"

**8-32 ROUND HEAD MACHINE SCREW, STEEL**

Modified:02/03/2016



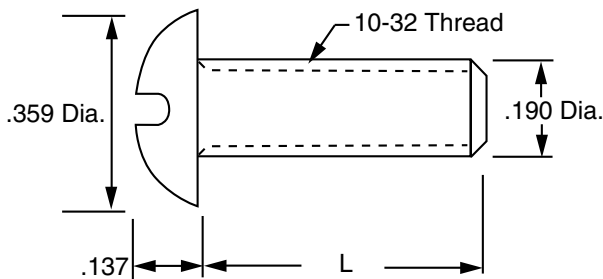
**Notes:**

- Finish is zinc plated and gold chromate.
- Dimensions are nominal.

part number		L	T	part number		L	T
Ordering Table	0030020110	3/16	3/16	0030021010	1	1	
	0030020210	1/4"	1/4"	0030021110	1-1/8"	1-1/8"	
	0030020310	5/16"	5/16"	0030021210	1-1/4"	1-1/4"	
	0030020410	3/8"	3/8"	0030021310	1-1/2"	1-1/2"	
	0030020610	1/2"	1/2"	0030021410	1-3/4"	1-3/4"	
	0030020710	5/8"	5/8"	0030021610	2-1/4"	2-1/4"	
	0030020810	3/4"	3/4"	0030021710	2-1/2"	2-1/2"	
	0030020910	7/8"	7/8"	0030021810	3	3	

**10-32 ROUND HEAD MACHINE SCREW, STEEL**

Sales Sheet Modified:06/14/2017



**Ordering Table**

Part Number	L	T
0030030110	1/4"	1/4"
0030030210	5/16"	5/16"
0030030310	3/8"	3/8"
0030030410	7/16"	7/16"
0030030510	1/2"	1/2"
0030030610	5/8"	5/8"
0030030710	3/4"	3/4"

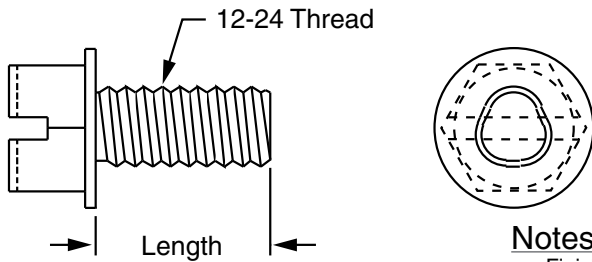
**Notes:**

- Finish is zinc plated and gold chromate.
- Dimensions are nominal.

F

**12-24 THREAD FORMING SCREW, HEX HEAD, SLOTTED**

Modified:09/22/2009



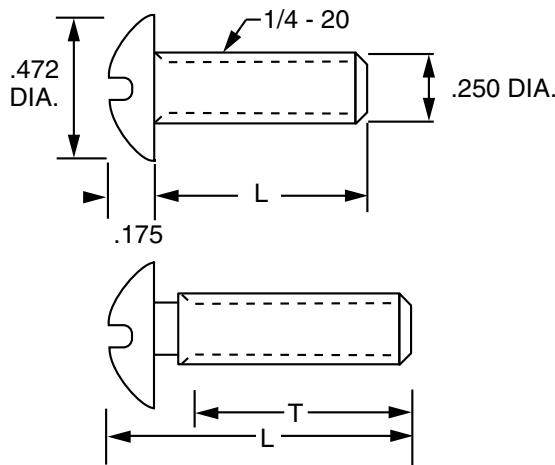
**Notes:**

- Finish is zinc plated and gold chromate.

	part number	L
Ordering Table	2108940110	3/8"
	2108940210	1/2"
	2108940310	5/8"
	2108940510	3/4"

**1/4"-20 ROUND HEAD MACHINE SCREW, STEEL**

Modified:08/27/2013



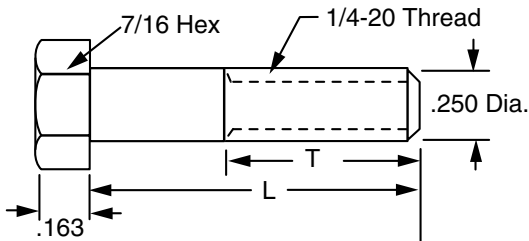
	Part Number	L	T	Part Number	L	T
Ordering Table	0030050110	5/16"	5/16"	0030050910	1-1/4"	1-1/4"
	0030050210	3/8"	3/8"	0030051010	1-1/2"	1-1/2"
	0030050310	1/2"	1/2"	0030051110	1-3/4"	1-3/4"
	0030050410	5/8"	5/8"	0030051210	2"	2"
	0030050510	3/4"	3/4"	0030051310	2-1/4"	1-3/4"
	0030050610	7/8"	7/8"	0030051410	2-1/2"	1-3/4"
	0030050710	1"	1"	0030051610	3"	3"
	0030050810	1-1/8"	1-1/8"			

**Notes:**

- Finish is zinc plated and gold chromate.
- Thread length (T) shown is minimum on screws not fully threaded.

**1/4"-20 HEXAGON HEAD CAP SCREW, STEEL**

Modified:09/22/2009



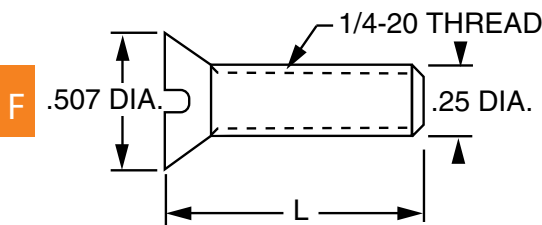
**Notes:**

- Finish is zinc plated and gold chromate.
- Dimensions are nominal.

	part number	L	T	part number	L	T
Ordering Table	0030060110	1/2"	1/2"	0030061110	2-1/2"	3/4"
	0030060210	5/8"	5/8"	0030061210	2-3/4"	3/4"
	0030060310	3/4"	3/4"	0030061310	3"	3/4"
	0030060410	7/8"	3/4"	0030061410	3-1/4"	3/4"
	0030060510	1"	3/4"	0030061510	3-1/2"	3/4"
	0030060610	1-1/4"	3/4"	0030061610	3-3/4"	3/4"
	0030060710	1-1/2"	3/4"	0030061710	4"	3/4"
	0030060810	1-3/4"	3/4"	0030061810	4-1/2"	3/4"
	0030060910	2"	3/4"	0030061910	5"	3/4"
	0030061010	2-1/4"	3/4"	0030062010	5-1/2"	3/4"
				0030062110	6"	3/4"

**1/4"-20 FLAT HEAD MACHINE SCREW, STEEL**

Modified:09/22/2009



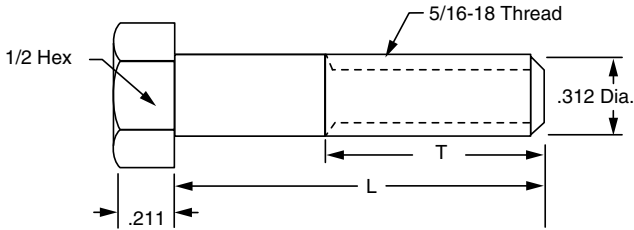
**Notes:**

- Finish is zinc plated and gold chromate.
- Dimensions are nominal.

	part number	L	T	part number	L	T
Ordering Table	0030070110	7/16"	7/16"	0030070910	1-1/2"	1-1/2"
	0030070210	1/2"	1/2"	0030071010	1-3/4"	1-3/4"
	0030070310	5/8"	5/8"	0030071110	2"	2"
	0030070410	3/4"	3/4"	0030071210	2-1/4"	1-3/4"
	0030070510	7/8"	7/8"	0030071310	2-1/2"	1-3/4"
	0030070610	1"	1"	0030071410	2-3/4"	1-3/4"
	0030070710	1-1/8"	1-1/8"	0030071510	3"	1-3/4"
	0030070810	1-1/4"	1-1/4"			

**5/16"-18 HEX HEAD CAP SCREW, STEEL**

Modified:09/22/2009



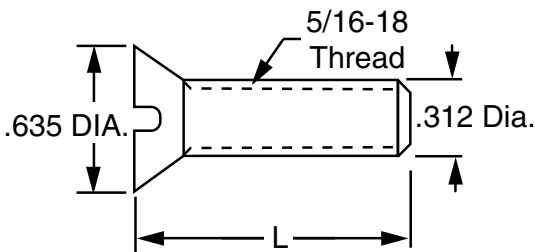
**Notes:**

- Finish is zinc plated and gold chromate.
- Dimensions are nominal.
- Thread length shown is minimum on screws not fully threaded.

Ordering Table	part number	L	T	part number	L	T
	0030080110	1/2"	1/2"	0030081110	2-1/2"	7/8"
	0030080210	5/8"	5/8"	0030081210	2-3/4"	7/8"
	0030080310	3/4"	3/4"	0030081310	3"	7/8"
	0030080410	7/8"	7/8"	0030081410	3-1/4"	7/8"
	0030080510	1"	7/8"	0030081510	3-1/2"	7/8"
	0030080610	1-1/4"	7/8"	0030081610	3-3/4"	7/8"
	0030080710	1-1/2"	7/8"	0030081710	4"	7/8"
	0030080810	1-3/4"	7/8"	0030081810	4-1/2"	7/8"
	0030080910	2"	7/8"	0030081910	5"	7/8"
0030081010	2-1/4"	7/8"	0030082010	5-1/2"	7/8"	
			0030082110	6"	7/8"	

**5/16"-18 FLAT HEAD MACHINE SCREW, STEEL**

Modified:09/22/2009



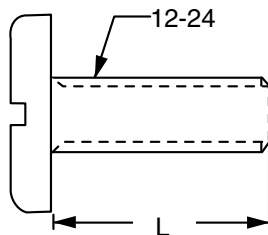
**Notes:**

- Finish is zinc plated and gold chromate.
- Dimensions are nominal.

Ordering Table	part number	L	T
	0030090110	1/2"	1/2"
	0030090210	5/8"	5/8"
	0030090310	3/4"	3/4"
	0030090410	7/8"	7/8"
	0030090510	1"	1"
	0030090610	1-1/4"	1-1/4"
	0030090710	1-1/2"	1-1/2"
	0030090810	1-3/4"	1-3/4"
	0030090910	2"	2"
0030091010	2-1/2"	1-3/4"	
0030091110	3"	1-3/4"	

**MOUNTING SCREW, STAINLESS STEEL**

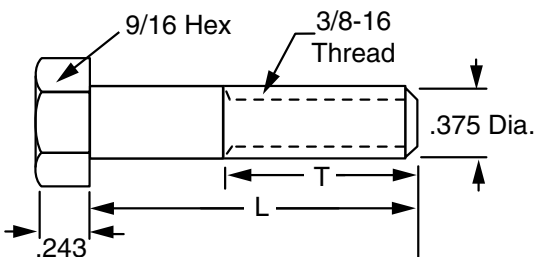
Modified:09/22/2009



Ordering Table	part number	length
	0040400112	3/8"
	0040400212	7/16"
	0040400312	1/2"
	0040400412	5/8"
	0040400512	3/4"
	0040400612	1"

**3/8"-16 HEXAGON HEAD CAP SCREW, STEEL**

Modified:09/22/2009



**Notes:**

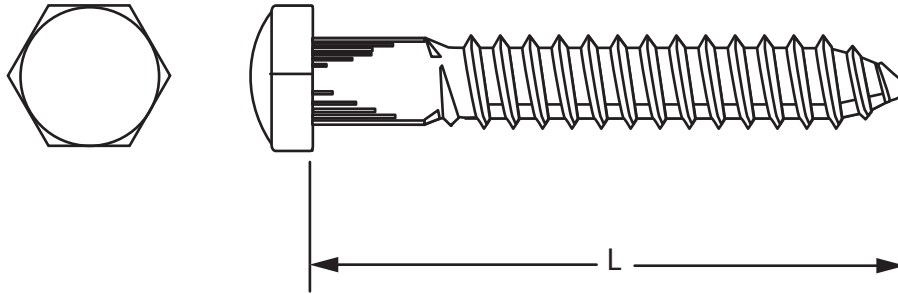
- Finish is zinc plated and gold chromate.
- Dimensions are nominal.
- Hardware is grade 5.
- Thread length shown is minimum on screws not fully threaded.

Ordering Table	part number	L	T	part number	L	T
	0030100110	1/2"	1/2"	0030101110	2-1/2"	1"
	0030100210	5/8"	5/8"	0030101210	2-3/4"	1"
	0030100310	3/4"	3/4"	0030101310	3"	1"
	0030100410	7/8"	7/8"	0030101410	3-1/4"	1"
	0030100510	1"	1"	0030101510	3-1/2"	1"
	0030100610	1-1/4"	1"	0030101610	3-3/4"	1"
	0030100710	1-1/2"	1"	0030101710	4"	1"
	0030100810	1-3/4"	1"	0030101810	4-1/2"	1"
	0030100910	2"	1"	0030101910	5"	1"
	0030101010	2-1/4"	1"	0030102010	5-1/2"	1"
				0030102110	6"	1"

F

3/8" LAG SCREW

Modified:05/14/2021



**Ordering Table**

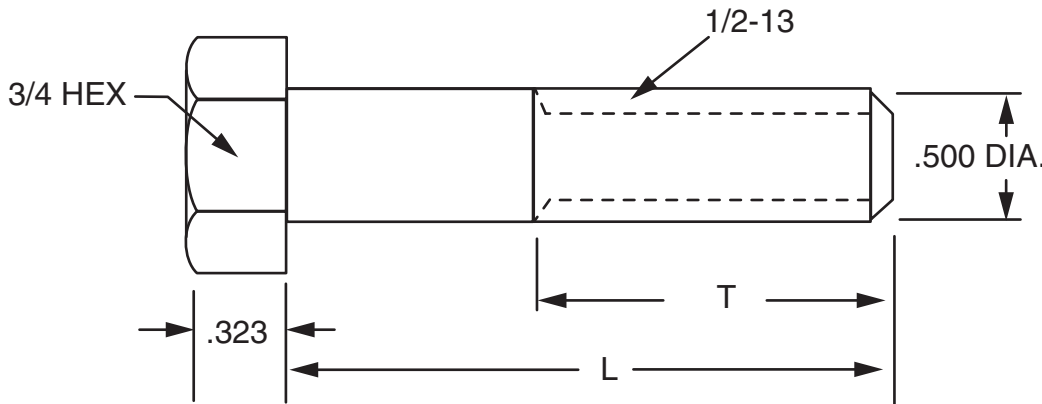
Part Number	L
0030130111	1"
0030130311	1-1/2"
0030130411	1-3/4"
0030130511	2"
0030130611	2-1/2"
0030130711	3"

**Notes:**

- Finish is zinc and clear.

1/2"-13 HEXAGON HEAD CAP SCREW, STEEL

Modified:02/26/2014



**Ordering Table**

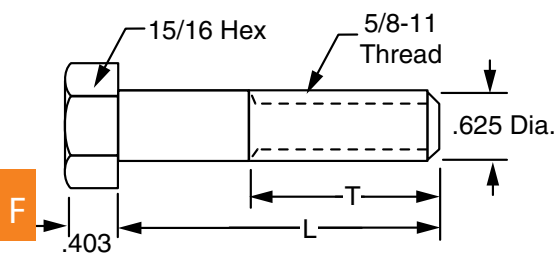
Part Number	L	T
0030110110	3/4"	3/4"
0030110210	7/8"	7/8"
0030110310	1	1
0030110410	1-1/4"	1-1/4"
0030110510	1-1/2"	1-1/4"
0030110610	1-3/4"	1-1/4"
0030110710	2	1-1/4"
0030110810	2-1/4"	1-1/4"
0030110910	2-1/2"	1-1/4"
0030111010	2-3/4"	1-1/4"
0030111110	3	1-1/4"
0030111210	3-1/4"	1-1/4"
0030111310	3-1/2"	1-1/4"
0030111410	3-3/4"	1-1/4"
0030111510	4	1-1/4"
0030111610	4-1/2"	1-1/4"
0030111710	5	1-1/4"
0030111810	5-1/2"	1-1/4"
0030111910	6	1-1/4"

**Notes:**

- Finish is zinc plated and gold chromate.
- Dimensions are nominal.
- Hardware is grade 5.
- Thread length (T) shown is minimum on screws not fully threaded.

5/8"-11 HEXAGON HEAD CAP SCREW, STEEL

Modified:09/22/2009



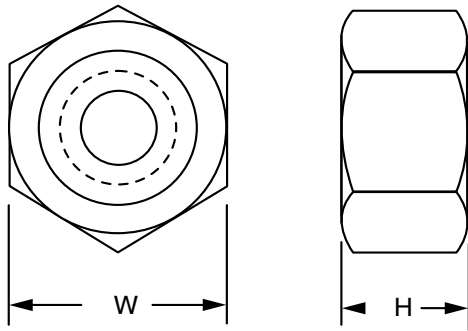
Ordering Table	part number	L	T	part number	L	T
	0030120110	1	1	0030121110	3-1/2"	1-1/4"
0030120210	1-1/4"	1-1/4"	0030121210	3-3/4"	1-1/4"	
0030120310	1-1/2"	1-1/2"	0030121310	4	1-1/4"	
0030120410	1-3/4"	1-1/2"	0030121410	4-1/2"	1-1/4"	
0030120510	2	1-1/2"	0030121510	5	1-1/4"	
0030120610	2-1/4"	1-1/4"	0030121610	5-1/2"	1-1/4"	
0030120710	2-1/2"	1-1/4"	0030121710	6	1-1/4"	
0030120810	2-3/4"	1-1/4"	0030121810	6-1/2"	1-3/4"	
0030120910	3	1-1/4"	0030121910	7	1-3/4"	
0030121010	3-1/4"	1-1/4"				

**Notes:**

- Finish is zinc plated and gold chromate.
- Dimensions are nominal.
- Hardware is grade 5.
- Thread length (T) shown is minimum on screws not fully threaded.

**HEAVY HEXAGON NUT**

Modified:09/22/2009



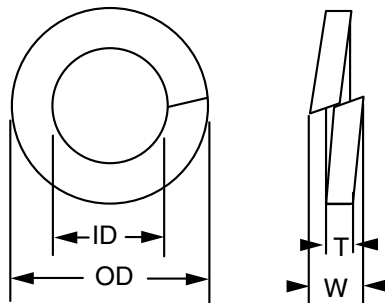
**Notes:**

- Finish is zinc plated and gold chromate.
- Dimensions are nominal.
- Hardware is grade 5 (3/8" or larger).

	part number	thread	W	H
<b>Ordering Table</b>	0030140110	8-32	11/32"	.130
	0030140210	10-32	3/8"	.130
	0030140310	12-24	7/16"	.161
	0030140410	14-20	1/2"	.266
	0030140510	5/16"-18	9/16"	.330
	0030140610	3/8"-16	11/16"	.393
	0030140710	1/2"-13	7/8"	.520
	0030140810	5/8"-11	1-1/16"	.647

**HELICAL SPRING LOCK WASHER**

Modified:01/23/2017



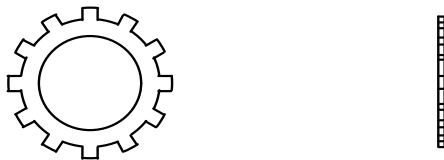
**Notes:**

- Finish is zinc plated and gold chromate.
- Dimensions are nominal.

	part number	size	ID	OD	W	T
<b>Ordering Table</b>	0030150110	no. 8	.168	.296	.055	.040
	0030150210	no. 10	.194	.337	.062	.047
	0030150310	no. 12	.221	.380	.070	.056
	0030150410	1/4"	.225	.493	.109	.062
	0030150510	5/16"	.319	.591	.125	.087
	0030150610	3/8"	.382	.688	.141	.094
	0030150710	1/2"	.509	.879	.171	.125
	0030150810	5/8"	.636	1.086	.203	.156

**EXTERNAL TOOTH LOCK WASHER**

Modified:09/22/2009



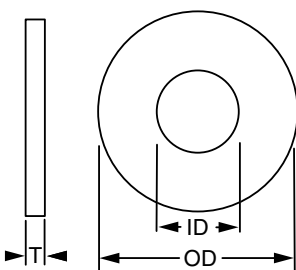
**Notes:**

- Finish is zinc plated and gold chromate.

	part number	size
<b>Ordering Table</b>	2080170110	no. 8
	2080170210	no. 10
	2080170310	no. 12
	2080170410	1/4"
	2080170510	5/16"
	2080170610	3/8"
	2080170710	1/2"
	2080170810	5/8"

**FLAT WASHER**

Modified:01/23/2017



**Notes:**

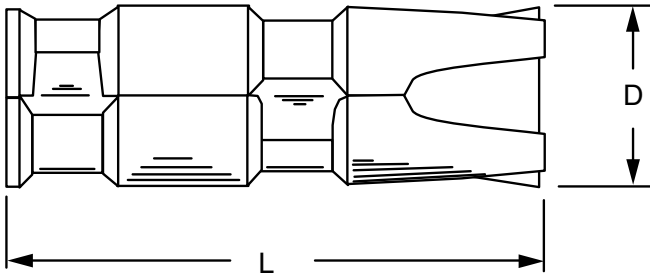
- Finish is zinc plated and gold chromate.
- Dimensions are nominal.

	part number	size	ID	OD	T
<b>Ordering Table</b>	0030160110	no. 8	.188	1/2"	.045
	0030160210	no. 10	.208	9/16"	.045
	0030160310	no. 12	.240	5/8"	.071
	0030160410	1/4"	.281	49/64"	.071
	0030160510	5/16"	.344	7/8"	.071
	0030160610	3/8"	.406	1"	.071
	0030160710	1/2"	.540	1-1/4"	.112
	0030160810	5/8"	.666	1-3/4"	.112
	0030160910	3/4"	.812	2"	.112
	2023891210	5/8	.656	2-1/4	.116



**MACHINE BOLT EXPANSION SHIELD**

Modified:02/08/2011



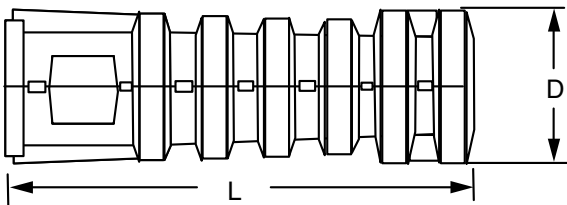
	part number	thread size	L	D
<b>Ordering Table</b>	0030180100	1/4"	1-1/4"	1/2"
	0030180300	5/16"	1-1/2"	5/8"
	0030180500	3/8"	1-1/2"	5/8"
	0030180800	1/2"	2	7/8"
	0030181000	5/8"	2-1/2"	1

**Notes:**

- Dimensions are nominal.

**LAG SCREW EXPANSION SHIELD**

Modified:10/08/2009



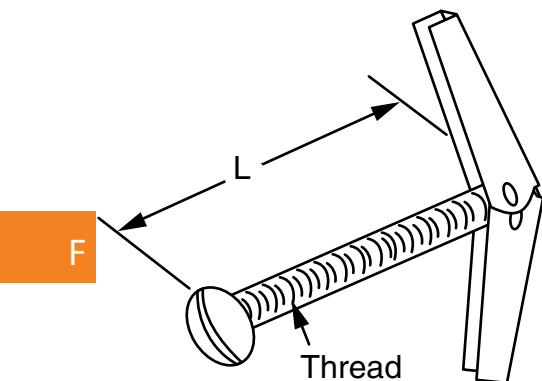
	Part Number	size	L	D
<b>Ordering Table</b>	0030190100	1/4"	1-1/2"	1/2"
	0030190200	1/4"	1"	1/2"
	0030190300	5/16"	1-3/4"	1/2"
	0030190400	5/16"	1-1/4"	1/2"
	0030190500	3/8"	2-1/2"	5/8"
	0030190600	3/8"	1-3/4"	5/8"
	0030190700	1/2"	3"	3/4"
	0030190800	1/2"	2"	3/4"
	0030190900	5/8"	3-1/2"	7/8"
	0030191000	5/8"	2"	7/8"

**Notes:**

- Dimensions are nominal.

**TOGGLE BOLT ASSEMBLY**

Modified:03/02/2010



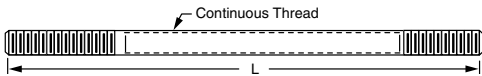
	part number	Thread size	L
<b>Ordering Table</b>	0030760111	10-24	2
	0030760211	10-24	3
	0030760311	10-24	4
	0030760411	1/4"-20	3
	0030760511	1/4"-20	4
	0030760611	5/16"-18	3
	0030760711	5/16"-18	4
	0030760811	3/8"-16	3
	0030760911	3/8"-16	4

**Notes:**

- Finish is zinc plated and clear chromate.

**THREADED ROD, 3/8", 1/2", 5/8"**

Sales Sheet Modified:02/09/2018



**3/8"-16 Ordering Table**

**1/2"-13 Ordering Table**

**5/8"-11 Ordering Table**

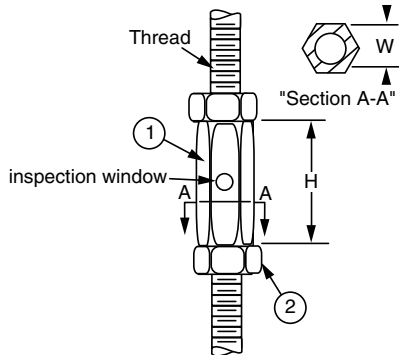
Part Number	L	Part Number	L	Part Number	L
0030200110	6"	2067360010	3-1/4"	0030220110	6"
0030200210	12"	0030210110	6"	0030220210	12"
0030200310	18"	0030210210	12"	0030220310	18"
0030200410	24"	0030210310	18"	0030220410	24"
0030200510	30"	0030210410	24"	0030220510	30"
0030200610	36"	0030210510	30"	0030220610	36"
0030200710	42"	0030210610	36"	0030220710	42"
0030200810	48"	0030210710	42"	0030220810	48"
0030200910	54"	0030210810	48"	0030220910	54"
0030201010	60"	0030210910	54"	0030221010	60"
0030201110	72"	0030211010	60"	0030221110	72"
0030230110	2-1/2"	0030211110	72"	2023935110	120"
0030230210	2-3/4"			2023934310	96"
0030230310	3"			2023934710	1-1/2"
0030230410	3-1/4"			2023934810	3"
0030230510	3-1/2"				
0030230610	3-3/4"				
0030230710	4"				

**Notes:**

- Finish is zinc plated and gold chromate.
- Dimensions are nominal.
- Hardware is grade b7 or equivalent strength.

**THREADED ROD COUPLING**

Sales Sheet Modified:06/08/2017



**Stock List**

Item	QTY	Description
1	1	Coupling
2	2	Hex nut

**Ordering Table**

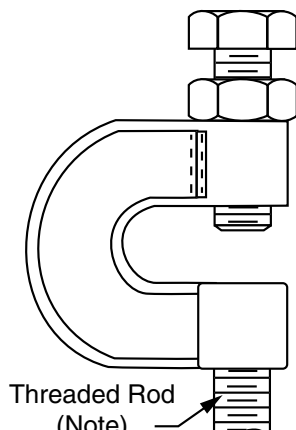
Part Number	Thread	H	W
0030530110	3/8"-16	1-3/4"	5/8"
0030530210	12-13	1-3/4"	11/16"
0030530310	5/8"-11	2-1/8"	13/16"

**Notes:**

- Finish is zinc plated and gold chromate.
- Coupling Kit is Grade 5.

**BEAM CLAMP**

Sales Sheet Modified:06/09/2017



**Ordering Table**

Part Number	Thread	Max Load
0030740100	3/8"-16	400 lbs.
0030740200	12-13	500 lbs.
0030740300	5/8"-11	550 lbs.
0030740400	3/4"-10	630 lbs.

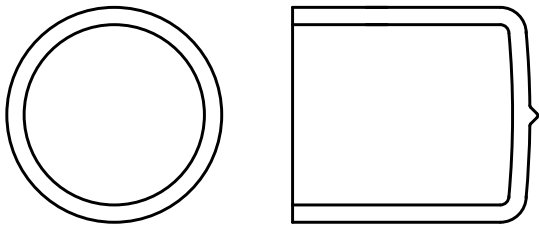
**Notes:**

- For attachment to "I" beams, channel and angle Flange where the flange thickness does not exceed 3/4".
- Refer to 003020, 003021, or 00302

F

**THREADED ROD END CAPS**

Sales Sheet Modified:08/19/2015

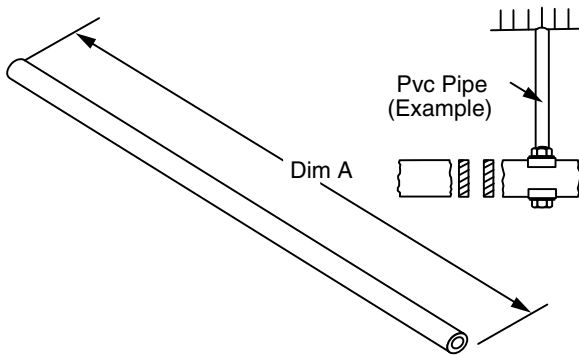


**Ordering Table**

Part Number	Threaded Rod	Color
2111990000	5/8"	Yellow
2111990100	3/8"	Red
2111990200	1/2"	Yellow
2111990400	5/8"	Black
2111990500	#12	Black

**PVC PIPE FOR COVERING 5/8" DIA THREADED ROD**

Sales Sheet Modified:06/22/2022



**Ordering Table**

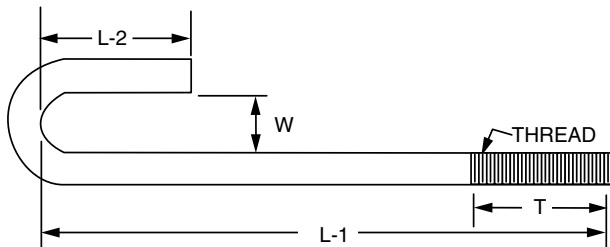
Part Number	Length	Color	Style
0030520000	120	Gray	solid
2110120100	72	Gray	split
2110120200	120	Charcoal	split
2110120300	36	Charcoal	split

**Notes:**

- 2110120100, 2110120200 and 2110120300 are split tubing applications.

**MISCELLANEOUS J-BOLTS**

Modified:09/22/2009



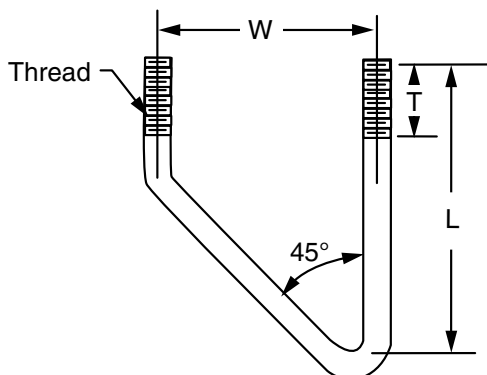
**Notes:**

- Finish is zinc plated and gold chromate.
- Dimensions are nominal.
- Special sizes available upon request.

	part number	L-1	W	L-2	T	Thread
<b>Ordering Table</b>	0030240110	1-3/4"	1/4	1/2"	3/4"	1/4"-20
	0030240210	3-1/4"	7/16	3/4"	1-1/2"	1/4"-20
	0030240310	2-1/4"	7/16	3/4"	1"	1/4"-20
	0030240410	3-3/4"	5/16	3/4"	1-1/4"	5/16"-18
	0030240510	3-1/4"	5/16	3/4"	3/4"	5/16"-18
	0030240610	3-1/4"	7/16	3/4"	1-1/2"	5/16"-18
	0030240710	2-1/4"	7/16	3/4"	1"	5/16"-18
	0030240810	3-3/4"	7/16	3/4"	1-1/4"	5/16"-18
	0030240910	2-3/4"	7/16	3/4"	1-1/4"	5/16"-18
	0030241010	2-1/4"	5/16	3/4"	1"	5/16"-18
	0030241110	2-3/4"	5/16	3/4"	1-1/4"	5/16"-18
	0030241210	1-3/4"	5/16	3/4"	3/4"	5/16"-18

**MISCELLANEOUS V-BOLTS**

Modified:08/20/2010



	part number	L	T	W	Thread
<b>Ordering Table</b>	0030250110	3	1"	2-7/16"	3/8"-16
	0030250210	4	1-1/4"	2-7/16"	3/8"-16
	0030250310	6	1-1/2"	2-7/16"	3/8"-16
	0030250410	5	1-1/2"	2-5/8"	1/2"-13
	0030250510	8	2"	2-5/8"	1/2"-13
	0030250610	13	10-3/4"	2-11/16"	5/8"-11
	2017020110	4-3/4	1-1/2"	2-7/16"	3/8"-16

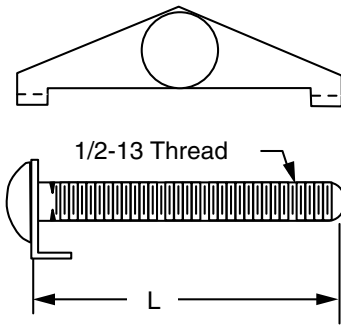
**Notes:**

- Finish is zinc plated and gold chromate.
- Dimensions are nominal.



**SPANNER J-BOLT**

Sales Sheet Modified:07/16/2018



**Notes:**

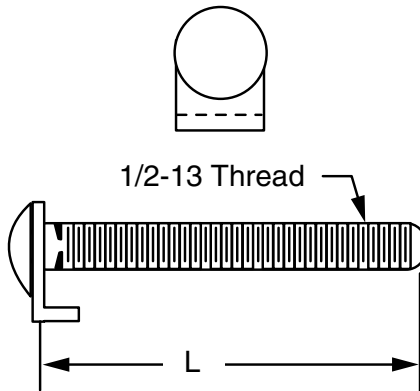
- Finish is zinc plated and gold chromate.
- Dimensions are nominal.
- Special sizes available upon request.
- Bolt is fully threaded.

**Ordering Table**

Part Number	L
0030260110	3-1/8"
0030260210	3-3/8"
0030260310	3-5/8"
0030260410	4-3/8"
0030260510	4-7/8"
2023941510	6-7/8"

**CLIP J-BOLT**

Sales Sheet Modified:12/13/2018



**Notes:**

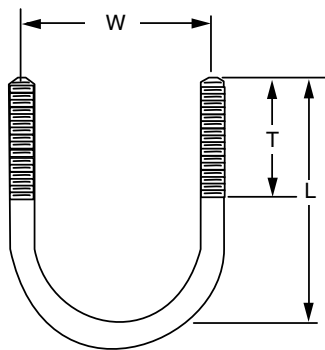
- Finish is zinc plated and gold chromate.
- Dimensions are nominal.
- Bolt is fully threaded.

**Ordering Table**

Part Number	L
0030270110	3-1/8"
0030270210	3-3/8"
0030270310	3-5/8"
0030270410	4-3/8"
0030270510	4-7/8"
2023950710	6-3/8"
2023950810	6-7/8"
2023951110	5-3/8"

**U-BOLT**

Modified:09/22/2009



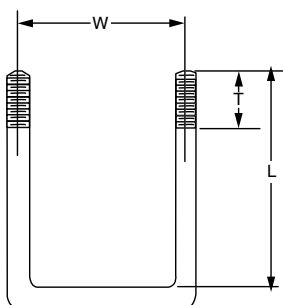
**Notes:**

- Finish is zinc plated and gold chromate.

	part number	L	T	W
<b>Ordering Table</b>	0030430110	2-3/8"	1-3/4"	1-1/8"
	0030430210	2-5/8"	1-3/4"	1-3/8"
	0030430310	2-7/8"	1-3/4"	1-5/8"

**U-BOLT, SQUARE BEND**

Modified:02/07/2013



**Notes:**

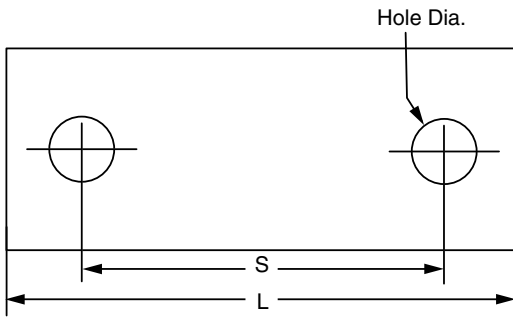
- Finish is zinc plated and gold chromate.

	part number	L	T	W
<b>Ordering Table</b>	0030440110	2-3/8"	1	1-31/32
	0030440210	3	1	1-31/32
	0030440310	3-15/16"	2-1/2"	1-15/16"
	0030440410	4-1/4"	1-1/4"	2-11/16
	0030440610	3-1/4"	1-1/4"	2-3/4"
	0030440710	2-3/8"	1-1/4"	2-1/4"
	0030440810	1-1/4"	7/8"	1-15/16"

F

**MISCELLANEOUS U-BOLT, J-BOLT & V-BOLT PLATES**

Modified:09/22/200



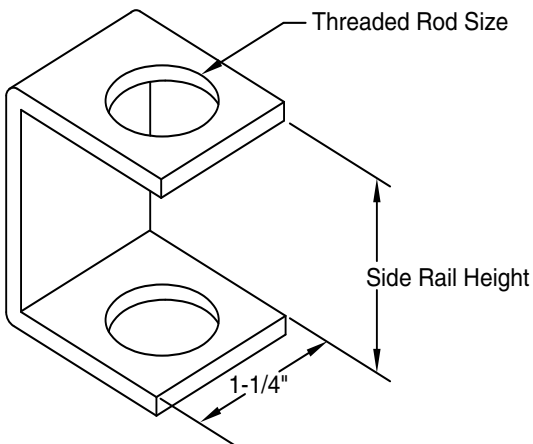
	part number	L	S	Hole
<b>Ordering Table</b>	0030280110	3-1/2"	2-7/16"	11/32"
	0030280210	3-1/2"	2-7/16"	7/16"
	0030280310	3-1/2"	2-21/32"	9/32"
	0030280410	3-1/2"	2-11/16"	11/16"
	0030280510	6.08	4.70	1/2"
	0030450110	2-1/4"	1-1/8"	5/16"
	0030450210	2-1/4"	1-3/8"	5/16"
	0030450310	2-3/4"	1-5/8"	5/16"
	0030450410	3	1-15/16"	3/8"
	0030450510	3-1/4"	2-1/4"	3/8"
	0030450610	3-1/2"	2-11/16"	3/8"
	0030450710	3-3/4"	2-3/4"	3/8"
	0030450810	3-5/8"	2-5/8"	3/8"

**Notes:**

- Finish is zinc plated and gold chromate.

**CABLE RACK SIDE BAR HANGER BRACKET**

Modified:09/22/2009



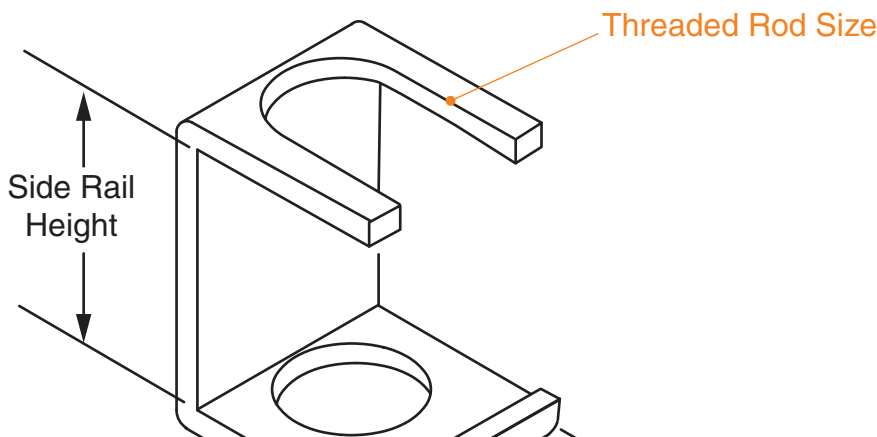
	part number	Side Rail Height	Threaded Rod
<b>Ordering Table</b>	0030290110	1-1/2"	5/8"
	0030290210	2-	5/8"
	2137680110	1-1/2"	3/8"
	2137680210	2-	3/8"
	2137680310	1-1/2"	1/2"
	2137680410	2-	1/2"

**Notes:**

- Finish is zinc plated and gold chromate.
- Dimensions are nominal.

**SLOTTED TYPE HANGING BRACKET**

Modified:03/02/20



**Ordering Table**

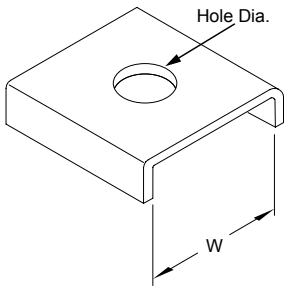
Part Number	Side Rail Height	Threaded Rod
2137670110	1-1/2"	3/8"
2137670210	1-1/2"	1/2"
2137670310	2"	1/2"
0030300110	1-1/2"	5/8"
0030300210	2"	5/8"

**Notes:**

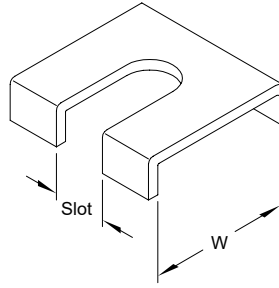
- Finish is zinc plated and gold chromate.
- Dimensions are nominal.
- Special sizes available upon request.

PARALLEL AUXILIARY FRAMING CLIP

Modified:09/25/2020



	Part Number	W	Hole	Bolt
* Ordering Table	0030310110	1-1/2"	13/32"	3/8"
	0030310210	1-1/2"	17/32"	1/2"
	0030310310	1-1/2"	21/32"	5/8"
	0030310410	1-7/8"	13/32"	3/8"
	0030310510	1-7/8"	17/32"	1/2"
	0030310610	1-7/8"	21/32"	5/8"
	0030310710	2-11/16"	9/16"	1/2"
	0030312510	1-7/8"	17/32"	3/8"
	* 0030312610	1-7/8"	21/32"	5/8"
	2016931410	1-11/16"	21/32"	5/8"
2016931510	1-11/16"	17/32"	3/8"	



	Part Number	W	Slot	Bolt
Ordering Table	2116720010	1-7/8"	21/32"	5/8"
	2116720110	1-1/2"	21/32"	5/8"

**Notes:**

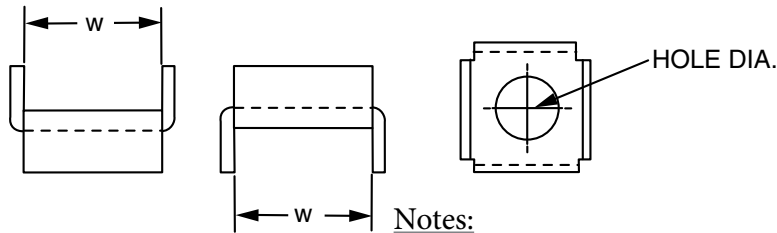
- Finish is zinc plated and gold chromate.
- Dimensions are nominal.
- \* designates Material made of 11ga. steel

**Notes:**

- Finish is zinc plated and gold chromate.
- Dimensions are nominal.
- Material made of 11ga. steel

PARALLEL AUXILIARY FRAMING CLIP FOR CROSSOVER JUNCTION

Modified:09/25/2020



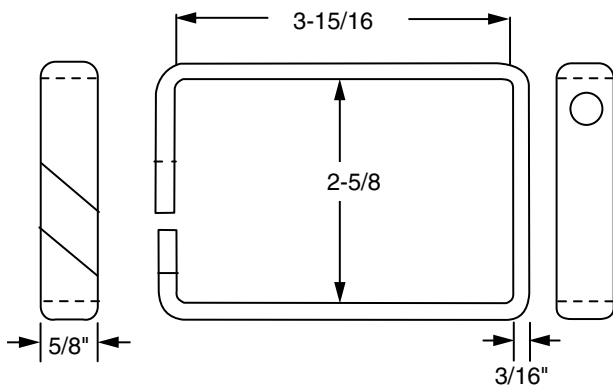
**Notes:**

- Finish is zinc plated and gold chromate.
- Dimensions are nominal.
- Special sizes available upon request.

	part number	W	Hole	Opening	Bolt
Ordering Table	0030320110	1-1/2"	13/32"	hole	3/8"
	0030320210	1-1/2"	17/32"	hole	1/2"
	0030320310	1-1/2"	21/32"	hole	5/8"
	0030320410	1-7/8"	13/32"	hole	3/8"
	0030320510	1-7/8"	17/32"	hole	1/2"
	0030320610	1-7/8"	21/32"	hole	5/8"
	2023960810	1-7/8"	21/32"	Slot	5/8"

CABLE BRACKET

Modified:09/22/2009



**Notes:**

- XX = finish code; standard finish, xx = 30.

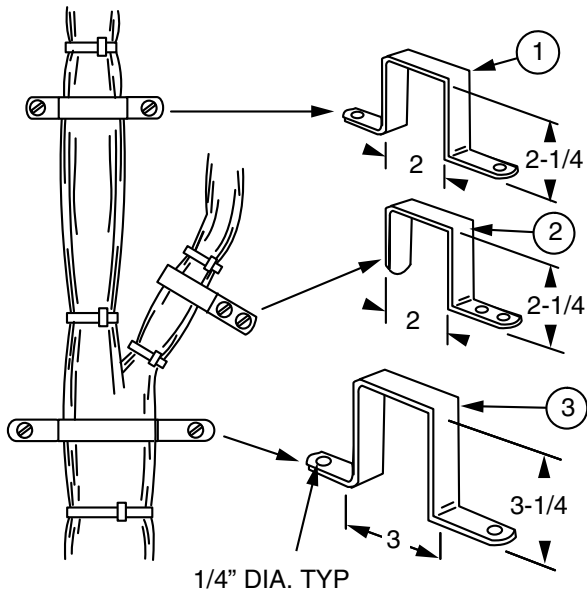
	part number
Ordering	00304100XX

	Item	Qty	Description
Stock List	1	1	cable bracket
	2	1	5/16" - 18 x 7/8" hncs
	3	1	5/16" hex nut

F

**CABLE DISTRIBUTION RINGS**

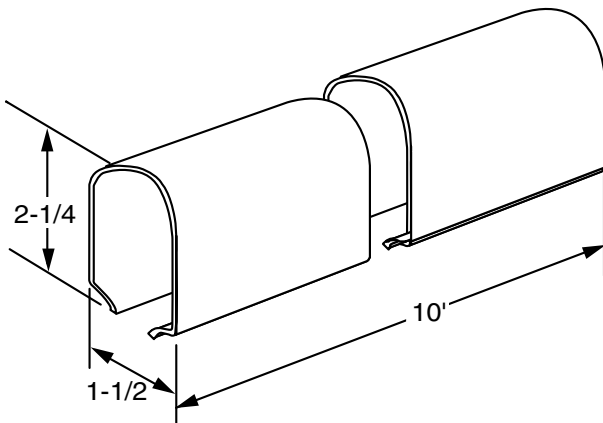


Ordering Table	part number		L
	0030420111		1
	0030420211		2
	0030420311		3

**Notes:**

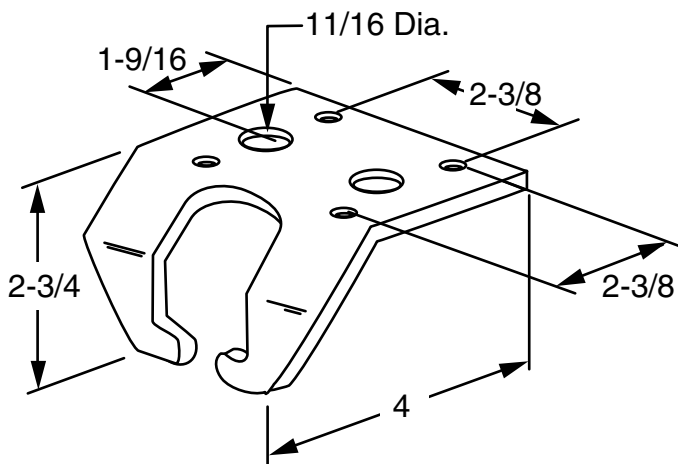
- Finish is zinc plated and clear chromate.

**LADDER TRACK**



Ordering	part number	
	0030470200	

**LADDER BRACKET**



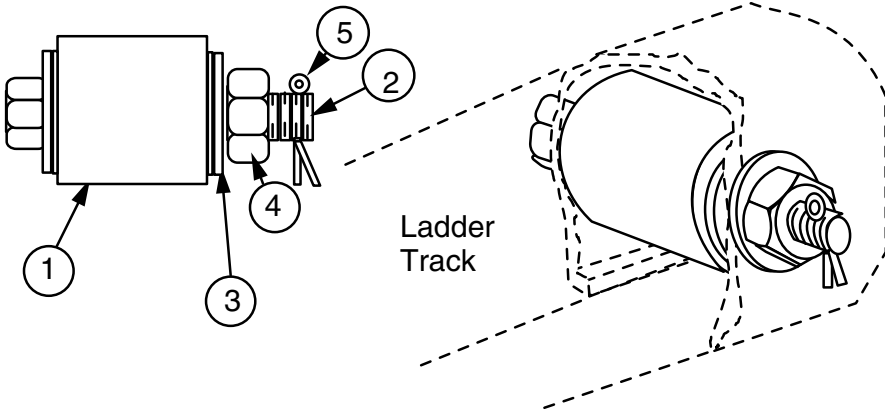
Ordering	part number	
	00304800XX	

**Notes:**

- XX = finish code; standard finish, xx = 30.

**LADDER TRACK STOP**

Modified:09/22/2009



part number	
Ordering	0030490011

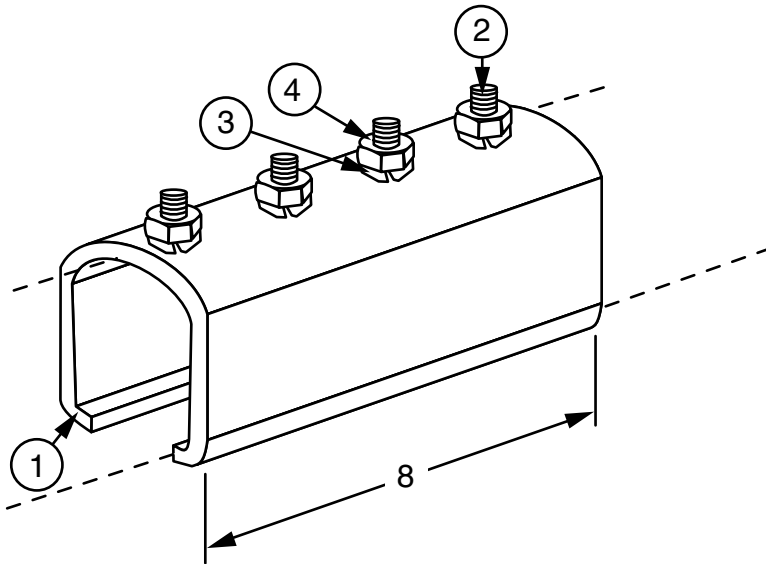
Item	Qty	Description
1	1	rubber bushing
2	1	3/8" hhcs
3	4	flat washer
4	1	3/8" hex nut
5	1	cotter pin

**Notes:**

- Finish is zinc plated and clear chromate.

**LADDER TRACK SPLICE**

Modified:09/22/2009



part number	
Ordering	0030500011

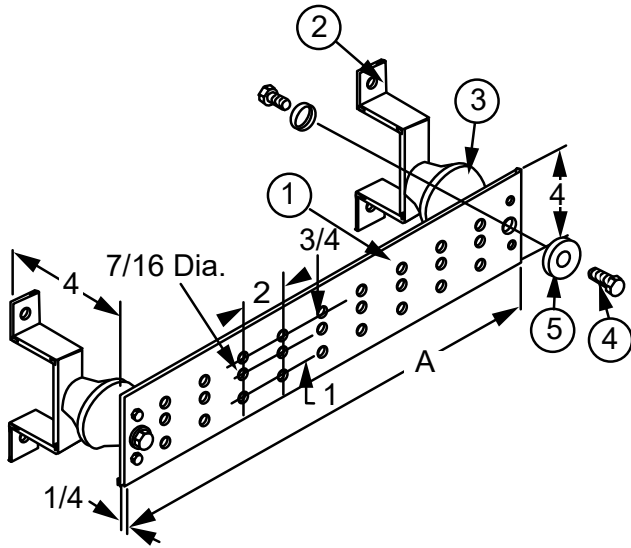
Item	Qty	Description
1	1	splice
2	4	1/4"-20 x 1/2" rhms
3	4	1/4" lock washer
4	4	1/4" hex nut

**Notes:**

- Finish is zinc plated and clear chromate.

INSULATED GROUND BAR, 1/4" X 4" X 20" (COPPER)

Modified:06/21/2022

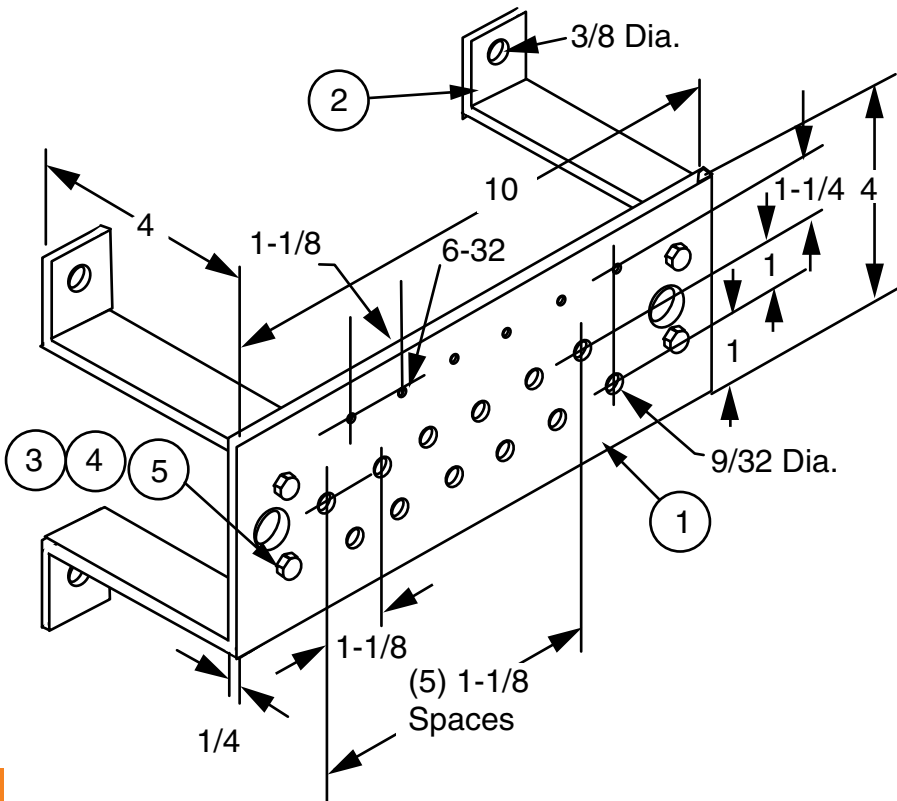


	part number	Dim A
Ordering	0030560010	20"
	4086150110	24"

	Item	Qty	Description
Stock List	1	1	ground bar
	2	2	wall mtg bracket
	3	2	insulator
	4	4	5/8"-11 x 1" hhcs
	5	4	5/8" lock washer

GROUND BAR, 1/4" X 4" X 10" (COPPER)

Modified:09/22/2009

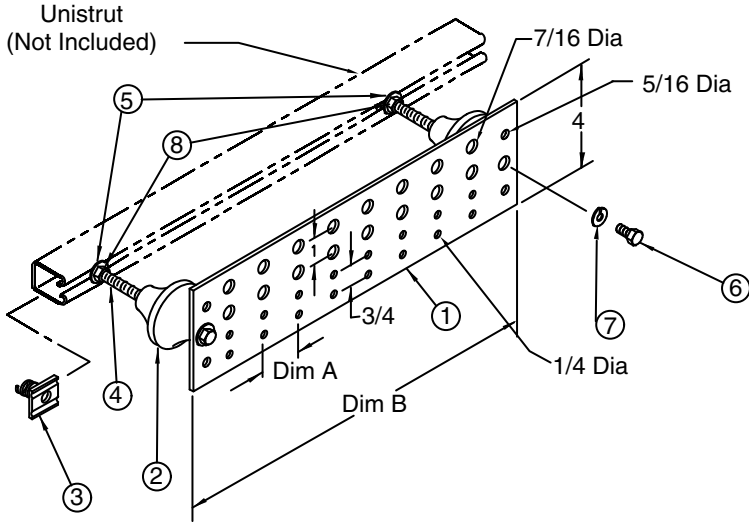


	part number
Ordering	0030570010

	Item	Qty	Description
Stock List	1	1	ground bar
	2	2	wall mtg bracket
	3	4	1/4"-20 x 7/8" hhcs
	4	4	1/2"-13 hex nut
	5	4	1/4" lock washer

**GROUND BAR KIT, INSULATED, UNISTRUT MOUNTING (COPPER)**

Sales Sheet Modified:02/10/2017



**Ordering Table**

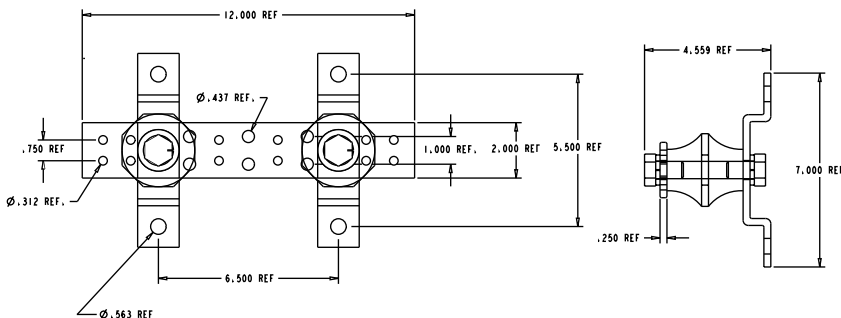
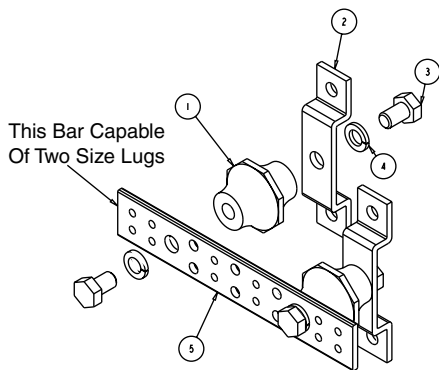
Part Number	A	B	7/16" holes	1/4" holes
2119370110	1-11/16"	16"	16	16
2119370210	1"	20"	34	34

**Stock List**

Item	QTY	Description
1	1	Ground Bar
2	2	Insulator
3	2	5/8"-11 Unistrut Nut
4	2	5/8"-11 X 1-1/2" Threaded Rod
5	2	5/8" Flat Washer
6	2	5/8"-11 X 1" HHCS
7	2	5/8" Lock Washer
8	2	5/8"-11 Hex Nut

**GROUND BAR KIT TGB**

Modified:11/19/2013



Part Number	
Ordering Table	2213090010

Stock List		
Item	Qty	Description
1	2	Insulator
2	2	Wall Mtg Bracket
3	4	5/8"-11 x 1" hhcs
4	4	5/8 lock washer
5	1	2" x 12" ground bar

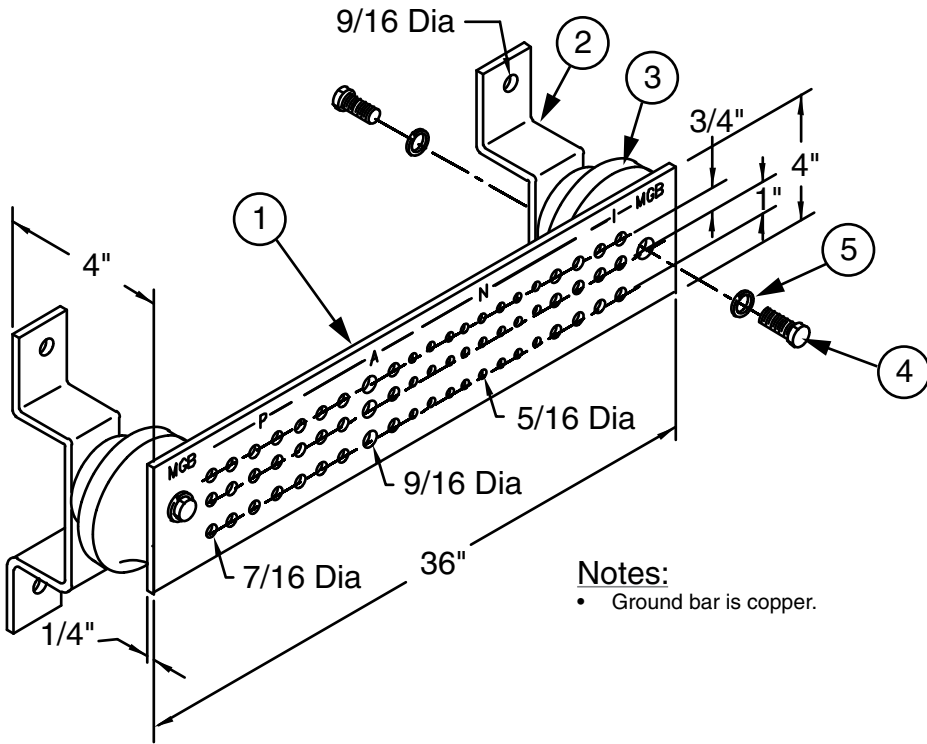






**INSULATED GROUND BAR KIT, 36", INSULATED (COPPER)**

Modified:09/22/2009



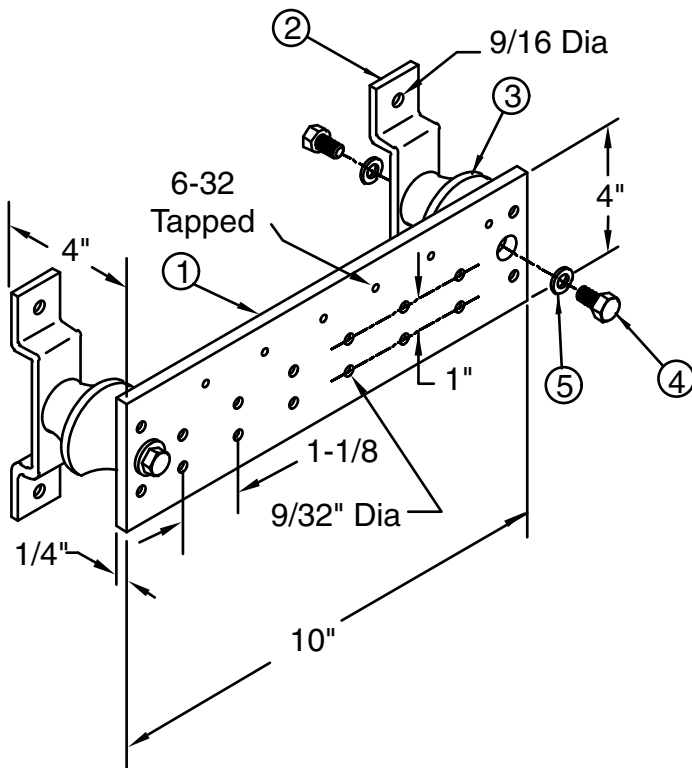
**Notes:**  
• Ground bar is copper.

part number	
Ordering	2100360010

Item	Qty	Description
1	1	ground bar
2	2	wall mtg bracket
3	2	insulator
4	4	5/8"-11 x 1" hhcs
5	4	5/8" lock washer

**INSULATED GROUND BAR KIT, 10", INSULATED (COPPER)**

Modified:09/22/2009



part number	
Ordering	4087620010

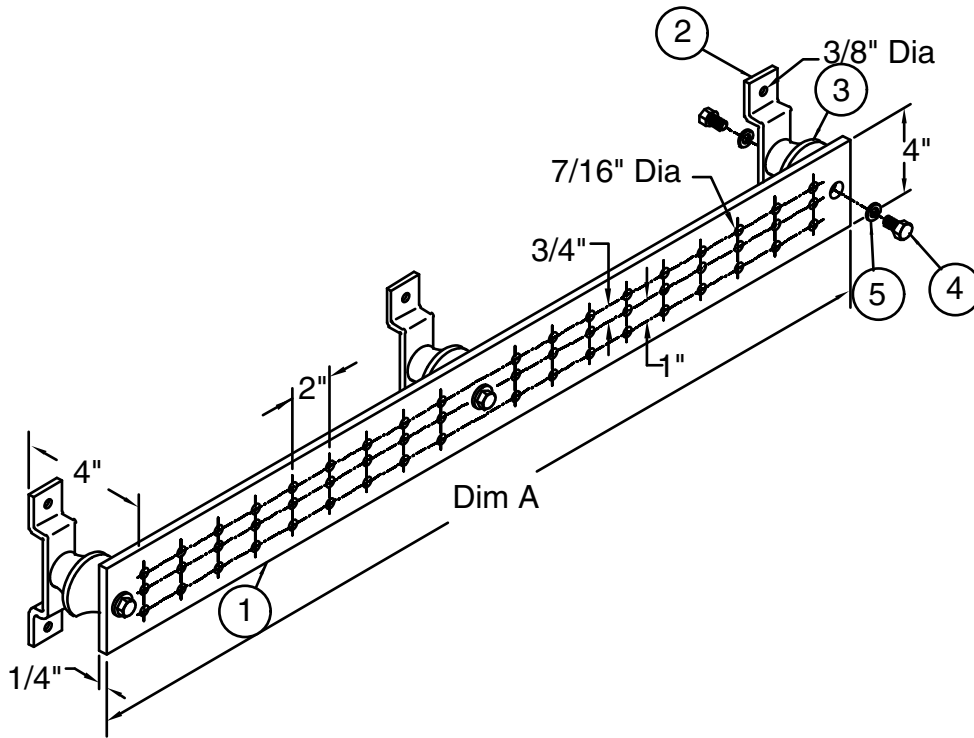
Item	Qty	Description
1	1	ground bar
2	2	wall mtg bracket
3	2	insulator
4	4	5/8"-11 x 1" hhcs
5	4	5/8" lock washer

**Notes:**  
• Ground bar is copper.

F

**INSULATED GROUND BAR ASSEMBLY, INSULATED (COPPER)**

Modified:09/22/2009

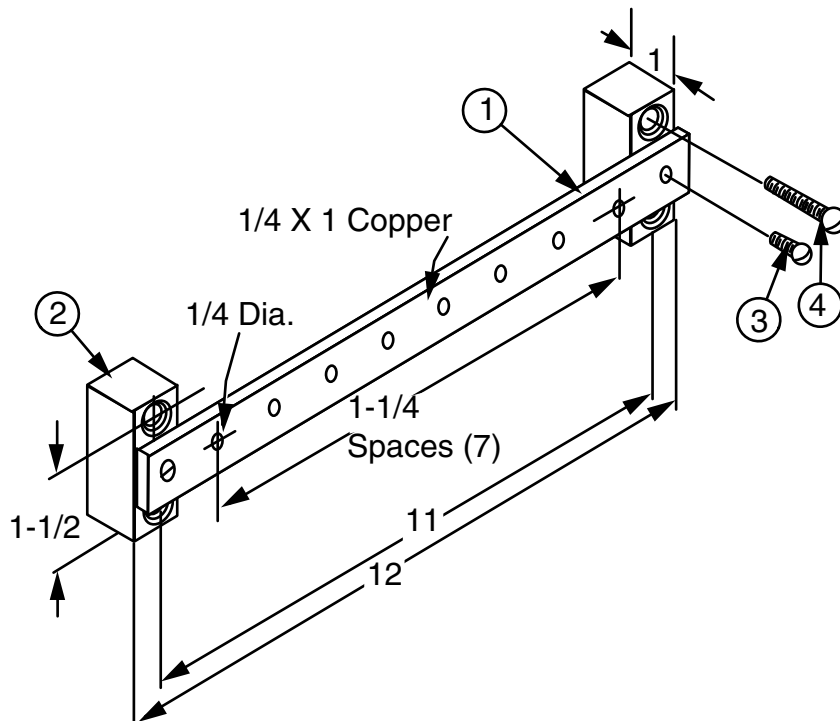


	part number	Dim A
Ordering Table	2108640010	40"
	2108640110	48"
	2108640210	60"

	Item	Qty	Description
Stock List	1	1	ground bar
	2	2	wall mtg bracket
	3	2	insulator
	4	4	5/8"-11 x 1" hhcs
	5	4	5/8" lock washer

**INSULATING GROUND BAR, 1/4" X 1" X 12" (COPPER)**

Modified:09/22/2009

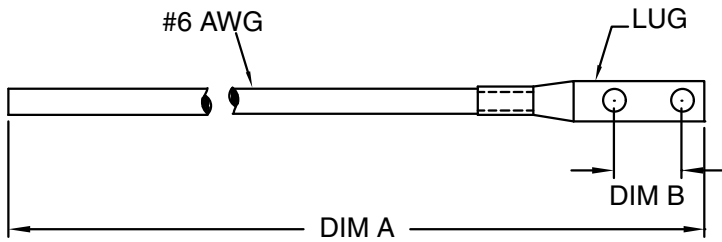


	part number
Ordering Table	0030590000

	Item	Qty	Description
Stock List	1	1	ground bar
	2	2	insulator
	3	2	1/4"-20 x 1/2" rhms
	4	4	1/4"-20 x 1-1/2" rhms

**GROUND STRAP ASSEMBLY**

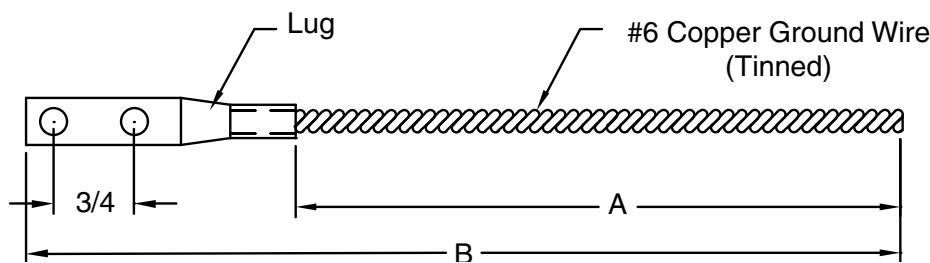
Modified:09/22/2009



	part number	ins. color	Dim A	Dim B	lug qty
Ordering Table	2128680100	green	38-9/32	5/8"	1
	2128680400	green	13	3/4"	2
	2128680500	black	21	5/8"	1
	2128680600	gray	74-1/2"	3/4"	1
	2128680700	green	6"	3/4"	2

**GROUND WIRE ASSEMBLY**

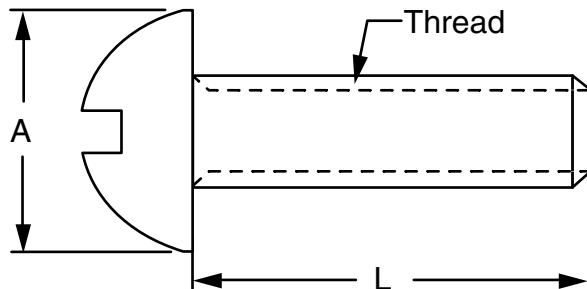
Modified:09/22/2009



	part number	Dim A	Dim B
Ordering Table	2092300000	21"	14-5/8"
	2092300200	24"	26-5/8"
	2092300300	108"	110-5/8"

**NYLON ROUND HEAD SCREW, TYPE 6/6**

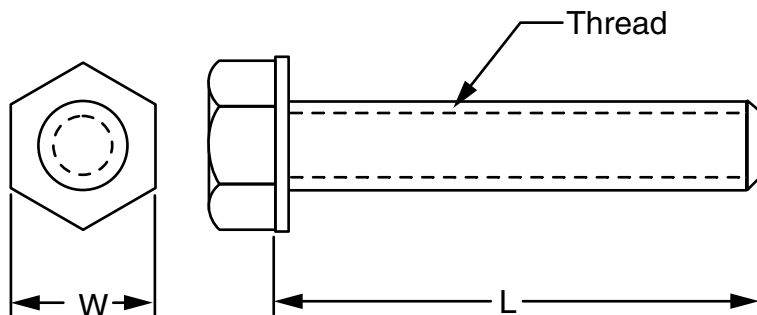
Modified:09/22/2009



	part number	A	L	thread
Ordering Table	0030690100	.290	1/2"	8-32
	0030690200	.290	1"	8-32
	0030690300	.360	1/2"	10-32
	0030690400	.360	1"	10-32
	0030690500	.475	1/2"	1/4"-20
	0030690600	.475	1"	1/4"-20

**NYLON HEX HEAD CAP SCREW (TYPE 6/6)**

Modified:09/22/2009

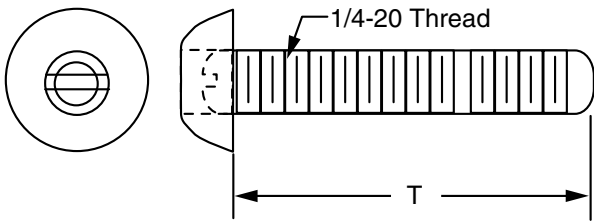


	part number	A	L	thread
Ordering Table	0030700100	.425	1/2"	1/4"-20
	0030700200	.425	1"	1/4"-20
	0030700300	.485	1/2"	5/16"-18
	0030700400	.485	1"	5/16"-18
	0030700500	.565	1"	3/8"-16
	0030700600	.565	1-1/2"	3/8"-16
	0030700700	.740	1"	1/2"-13
	0030700800	.740	1-1/2"	1/2"-13
	0030700900	.935	1"	5/8"-11
	0030701000	.935	2"	5/8"-11
	0030701100	.425	1-1/2"	1/4"-20

F

**NYLON/STEEL CORE PAN HEAD SCREW**

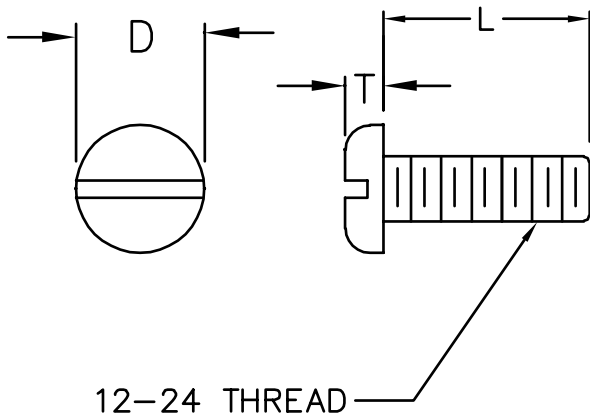
Modified:09/22/2009



	part number	L	thread
<b>Ordering Table</b>	0030750000	3/4"	1/4"-20
	0030750200	1"	1/4"-20
	0030750300	1-1/4"	1/4"-20
	0030750400	1-1/2"	1/4"-20

**NYLON PHMS, 12-24**

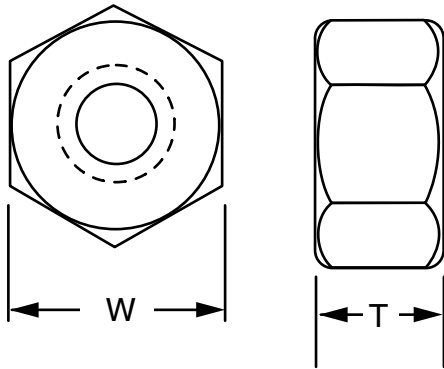
Modified:10/08/2009



	Part Number	T	D	L
<b>Ordering Table</b>	20746201xx	.120	3/8"	1/2"
	20746202xx	.120	3/8"	3/4"
	20746203xx	.120	3/8"	1"

**NYLON HEX NUT (TYPE 6/6)**

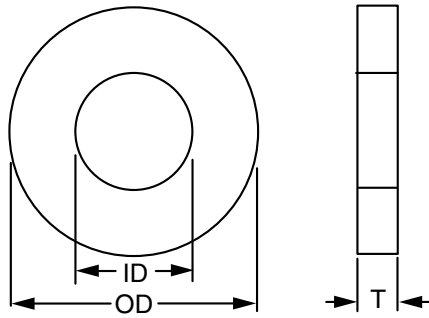
Modified:09/22/2009



	part number	W	T	thread
<b>Ordering Table</b>	0030710100	.425	.200	1/4"-20
	0030710200	.500	.270	5/16"-18
	0030710300	.560	.330	3/8"-16
	0030710400	.750	.430	1/2"-13
	0030710500	.925	.550	5/8"-11

**NYLON FLAT WASHER (TYPE 6/6)**

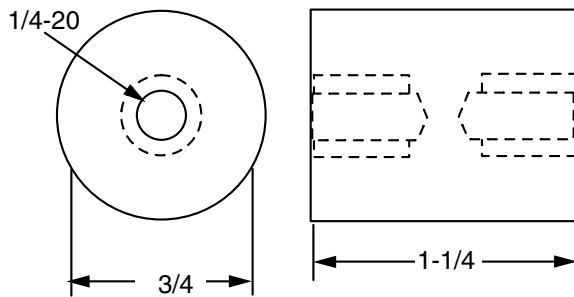
Modified:09/22/2009



	part number	ID	OD	T
<b>Ordering Table</b>	0030720100	.257	1/2	.062
	0030720200	.317	1/2	.062
	0030720300	.380	5/8	.062
	0030720400	.505	3/4	.062
	0030720500	.656	27/32	.062

**INSULATING STAND-OFF**

Modified:09/22/2009



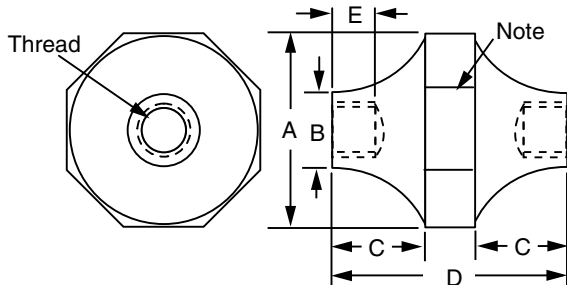
**Notes:**

- Material is rated ul 94 v-1 and has an oxygen index rating of greater than 29.
- Insulator shape may vary from that shown. Dimensions are nominal, and may vary depending on shape.
- The shoulder may be round or octagonal.

	part number
<b>Ordering</b>	0030600100

**MOLDED POLYESTER-FIBERGLASS INSULATOR**

Sales Sheet Modified:04/23/2021



**Ordering Table**

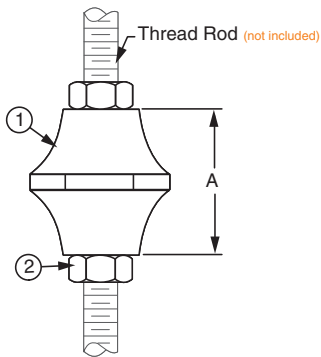
Part Number	A	B	C	D	E	Thread
0030610100	2"	1-1/4"	11/16"	1-1/2"	1/4"	1/4-20"
0030610200	2"	1-1/4"	11/16"	1-1/2"	3/8"	3/8-16"
0030610400	2-5/8"	1-1/2"	1-1/4"	2-3/4"	5/8"	5/8-11"
0030610500	2-1/2"	1-3/8"	1-1/8"	2-5/8"	3/4"	5/8-11"
2057750600	2"	1-1/8"	5/8"	2-1/4"	5/8"	1/2-13"

**Notes:**

- Insulator shape may vary from that shown dimensions are nominal, and may vary depending on shape.
- The shoulder may be round or octagonal.
- This is a thermoset part with highly glass filled material. File marks are common and will not affect the part performance in any way.

**MOLDED POLYESTER-FIBERGLASS INSULATOR**

Sales Sheet Modified:07/12/2021



**Notes:**

- Insulator shape may vary from that shown.
- The insulator is a thermoset part with highly glass filled material. File marks are common and will not affect the part performance in any way.

**Ordering Table**

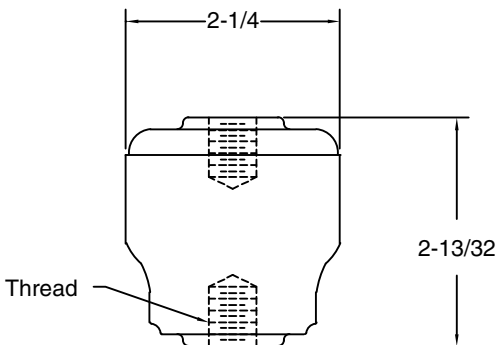
Part Number	A	Thread
0030630110	1-1/2"	1/4-20
0030630210	1-1/2"	3/8-16
0030630310	2-1/4"	1/2-13
0030630410	2-3/4"	5/8-11

**Stock List**

Item	QTY	Description
1	1	Insulator
2	2	Hex Nut

**INSULATOR, FIBERGLASS**

Sales Sheet Modified:08/15/2017



**Ordering Table**

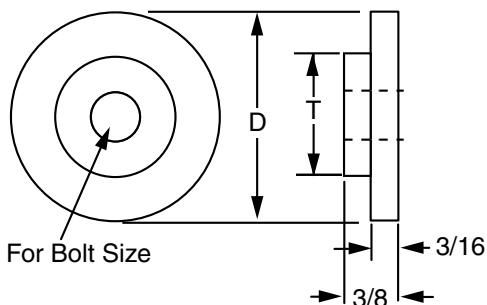
Part Number	Thread Size
2106830100	1/2-13"

**Notes:**

- Material is rated ul 94 v-1 and has an oxygen index rating of greater than 29.
- For 5/8-11 application use refer to 0030610400

**INSULATING BUSHING**

Sales Sheet Modified:08/15/2017



**Ordering Table**

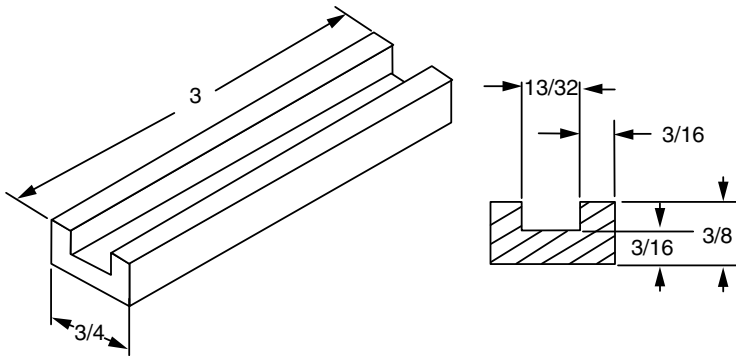
Part Number	D	T	Bolt Size
0030620100	1-1/2"	19/32"	1/4"
0030620200	1-1/2"	23/32"	3/8"
0030620300	1-3/4"	27/32"	1/2"
0030620400	1-3/4"	31/32"	5/8"

**Notes:**

- Material is rated ul 94 v-1 and has an oxygen index rating of greater than 29.

**3/8" X 2" AUX. BAR OR 3/8" X 1-1/2" CABLE RACK SIDE BAR INSULATOR**

Modified:09/22/2009



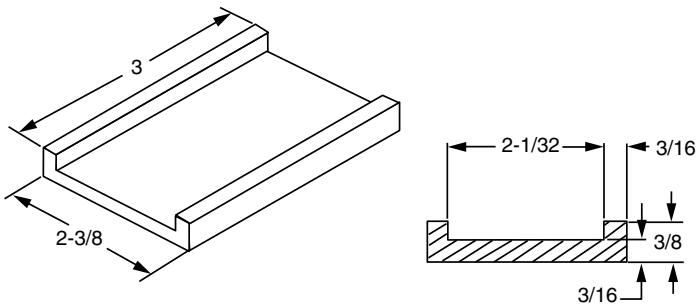
Ordering	part number
	0030640000

**Notes:**

- Material is rated ul 94 v-1 and has an oxygen index rating of greater than 29.
- For use with 3/8" thick material.

**2" X 1" X 3/16" CHANNEL INSULATOR**

Modified:09/22/2009



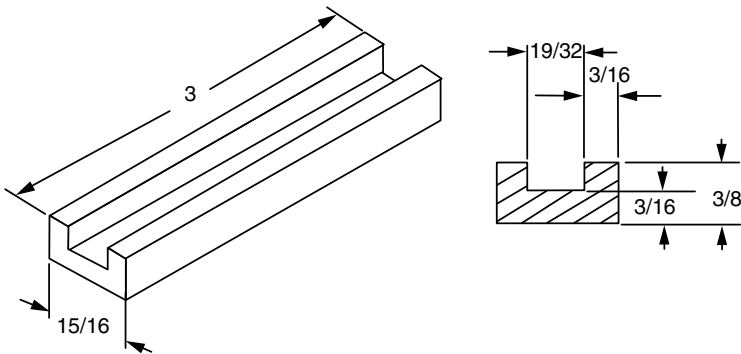
Ordering	part number
	0030650000

**Notes:**

- Material is rated ul 94 v-1 and has an oxygen index rating of greater than 29.
- For use with 2" wide channel.

**2" X 9/16" X 3/16" CHANNEL INSULATOR**

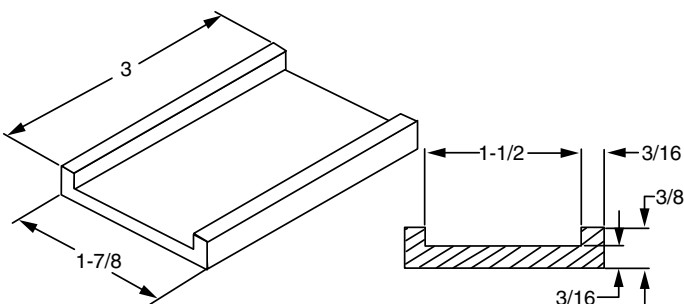
Modified:09/22/2009



Ordering	part number
	0030660000

**3/8" X 2" CHANNEL INSULATOR**

Modified:09/22/2009



Ordering	part number
	0030670000

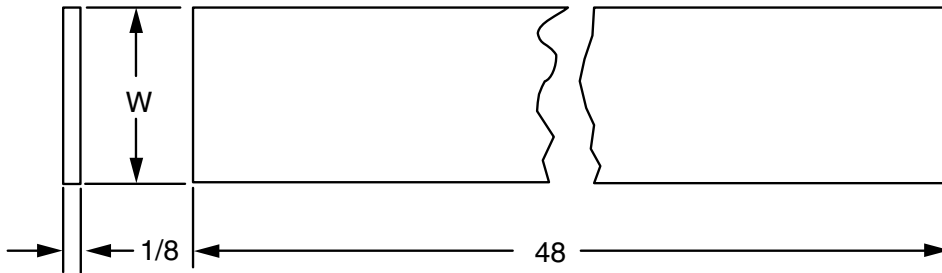
**Notes:**

- Material is rated 94 V-1 and has an oxygen index rating of greater than 29.

F

**INSULATING SHEET**

Sales Sheet Modified:01/26/2018



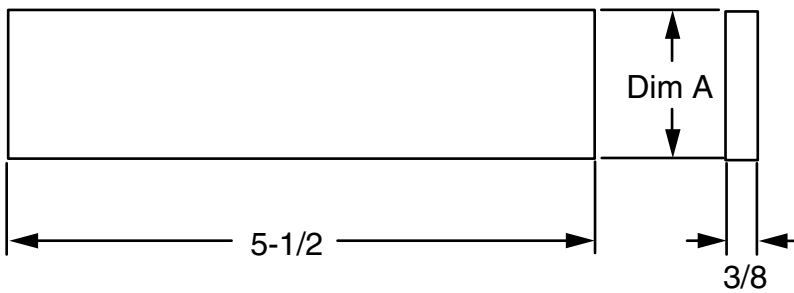
**Ordering Table**

Part Number	W
0030680100	3"
0030680200	4-1/2"
0030680300	6"
0030680400	12"
0030680500	15"
0030680600	16"
0030680700	18"
0030680800	24"
0030681000	48"
2070560900	2"

Notes:

**INSULATOR BAR**

Modified:09/22/2009



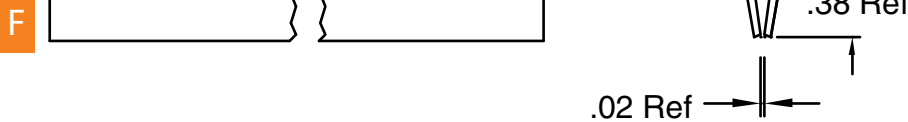
part number	A
0030730000	1-1/2"
0030730100	2"

Notes:

- Material is rated ul 94 v-1 and has an oxygen index rating of greater than 29.

**RIGID PVC CHANNEL STRIP**

Modified:09/22/2009



part number	A
2126000100	6'-9"
2126000200	7'-3"
2126000300	7'-9"
2126000400	8'-9"
2126000500	11'-6"
2126000600	6'-3"

Notes:

- Meets or exceeds UL flammability requirement UL 94 V-1.



## TOUCH UP PAINT, BRUSH-ON

Sales Sheet Modified:08/19/2015



## Ordering Table

Part Number	Color	Finish Code
0043560100	Blue 07	64
0043560200	Gray 02	31
0043560300	Gray 01	30
0043560400	Brown 01	50
0043560500	White	90
0043560600	Gold	10
2121320100	Orange	85
2123750300	Putty White	94

## Notes:

- Air dry enamel.
- Brush is attached to cap.
- 0.6 Oz. Bottle.
- For use with gold chromate finished items.

## AEROSOL TOUCH UP PAINT

Sales Sheet Modified:01/05/2017



## Ordering Table

Part Number	Color	Finish Code	QTY
0030540100	Gray 01	30	1
0030540200	Gray 02	31	1
0030540300	Blue 07	64	1
0030541000	Brown 01	50	1
2184540200	Almond	9C	1
2121320000	Orange	85	1

## Notes:

- Air dry enamel.
- Size: 12 oz.
- Other colors available

NOTES: