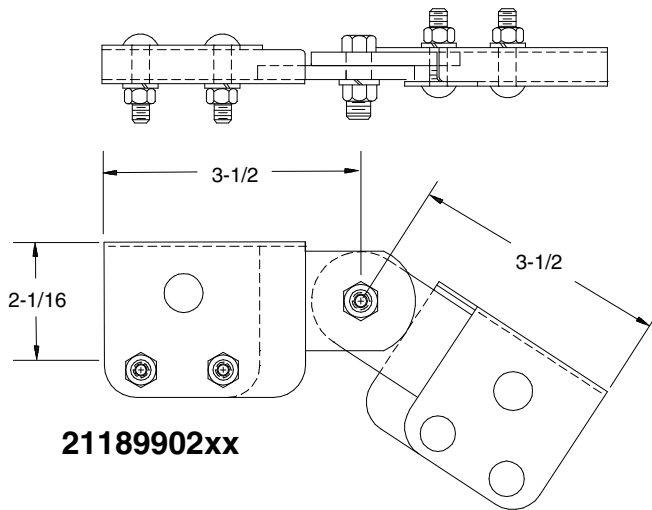


Made Right When You Need It, Driven To Be Better

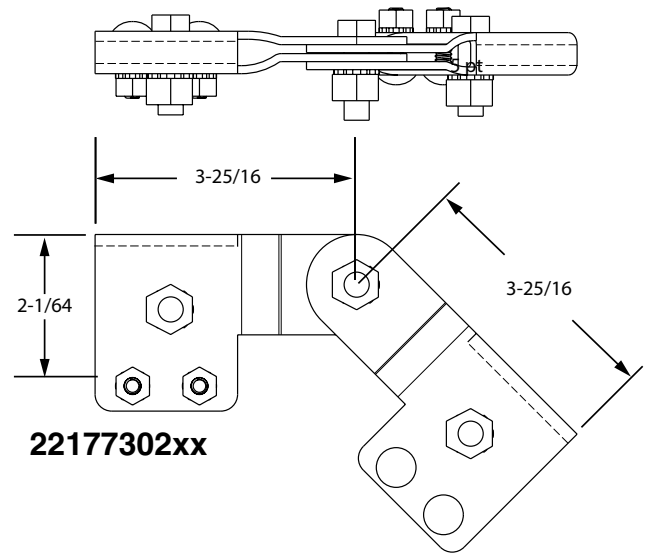
Existing Pivot



21189902xx

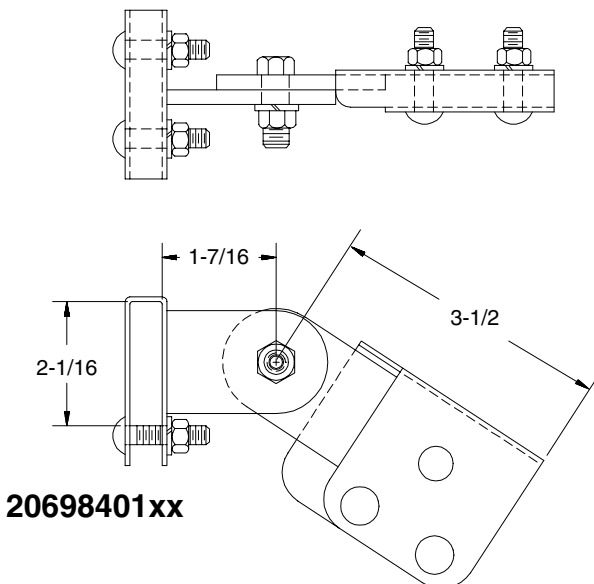
- » Material is 1/16" & 3/16" steel -- pivot point 3/8" material
- » Quantity of 2 needed for cable rack connections
- » Includes split lock washer only.
- » Hardware for bolting through cable rack **not** included.

New Pivot Design

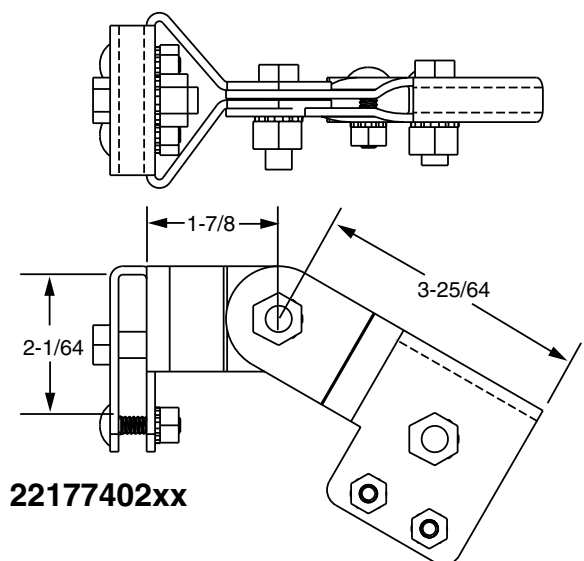


22177302xx

- » Material is 1/8" steel -- pivot point 1/2" of material.
- » Quantity of 2 included in kit, making a complete set for each cable rack connection.
- » Includes external tooth & split lock washers.
- » Includes hardware for bolting through cable rack.
- » Design basis is heavy duty and consistent.



20698401xx



22177402xx