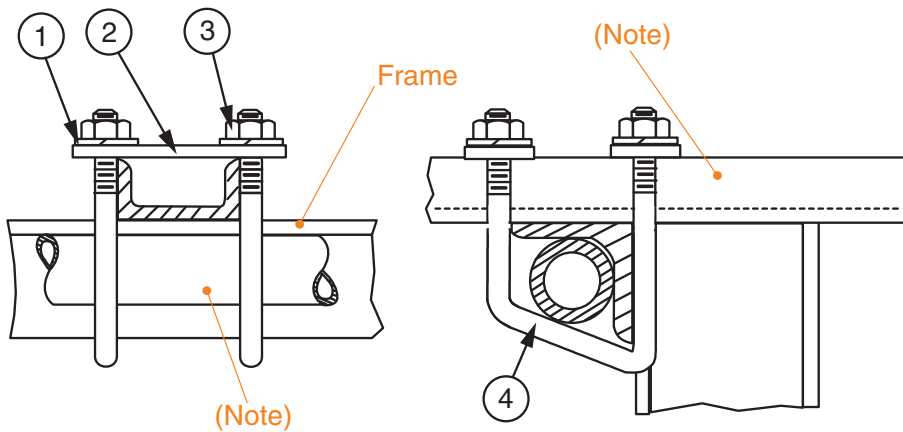


**FASTENING FRAME TOP ANGLE TO AUXILIARY CHANNEL-- 2" X 1" X 3/16"**

Modified:06/04/2014



**Ordering Table**

**Part Number**

00101300xx

**Stock List**

Item	QTY	Description
1	2	3/8 Lock Washer
2	4	Plate
3	4	3/8"-16 Nut
4	4	V-Bolt

**Notes:**

- Finish is zinc plated and gold chromate, finish code 10.
- Pipe not included; refer to 003037.
- Auxiliary Framing Channel not included; refer to 001002.