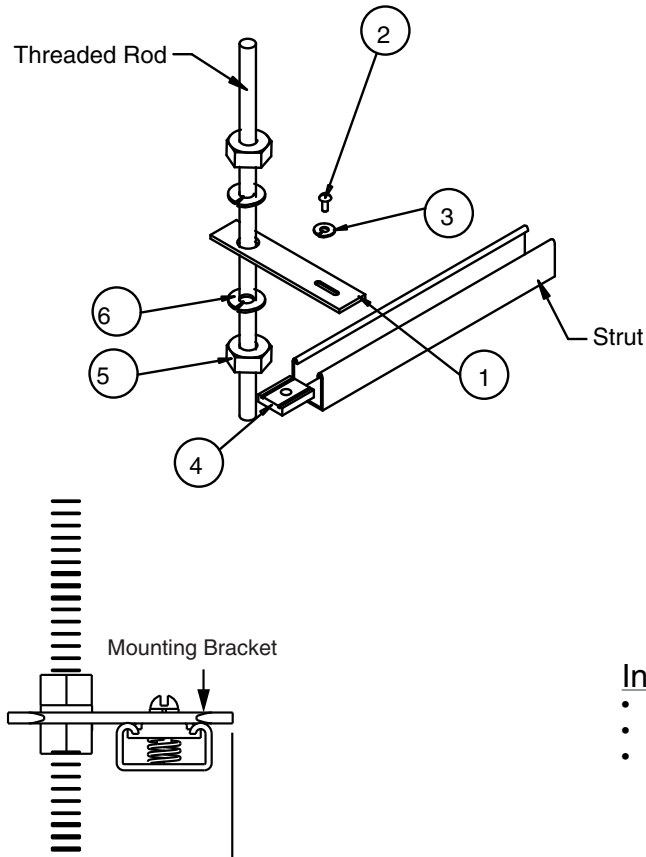


END ACCESSIBLE THREADED ROD MOUNTING KIT - STRUT

Modified:10/15/2014



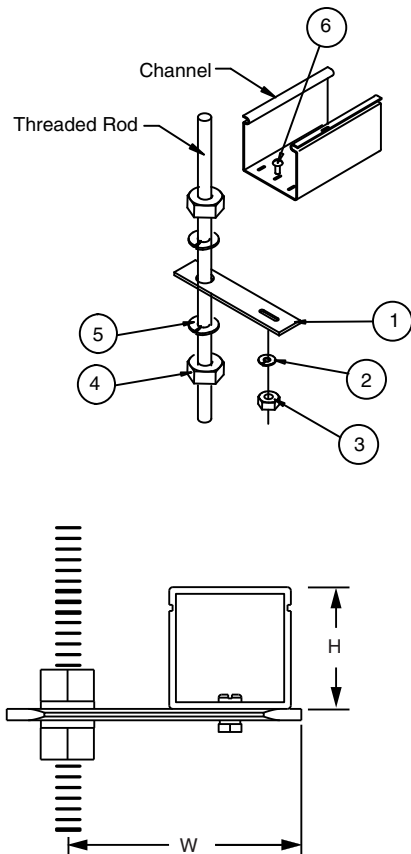
	part number	w	threaded rod
Ordering	0025510310	2.85 (72)	1/2"
	0025510410	2.85 (72)	5/8"

	Item	Qty	Description
Stock List	1	1	bracket
	2	1	1/4-20 x 3/4 rhms
	3	1	1/4 helical washer
	4	1	1/4-20 spring nut
	5	2	heavy hex head nut
	6	2	helical spring lock washer

Installation Notes

- Attach the bracket utilizing accessible end of threaded rod.
- Mount the support strut with bolt and spring.
- When mounting a fitting, one 13/64" hole must be drilled in the fitting.

END ACCESSIBLE THREADED ROD MOUNTING KIT - CHANNEL



	part number	W	H	channel	threaded rod
Ordering	0025510510	2	3.8	2x2	1/2
	0025510610	2	3.8	2x2	5/8
	0025510710	4	5.0	4x4	1/2
	0025510810	4	5.0	4x4	5/8
	0025511010	9	5.0	4x4	5/8

	Item	Qty	Description
Stock List	1	1	bracket
	2	ar	10-32 x 1/2" rhms
	3	ar	10 helical spring lock washer
	4	ar	10-32 hhn
	5	2	heavy hex nut
	6	2	helical spring lock washer

Installation Notes

- Attach the bracket utilizing accessible end of threaded rod
- Mount channel or fitting with 10-32 hardware
- When mounting a fitting, one 13/64" hole must be drilled in the fitting.