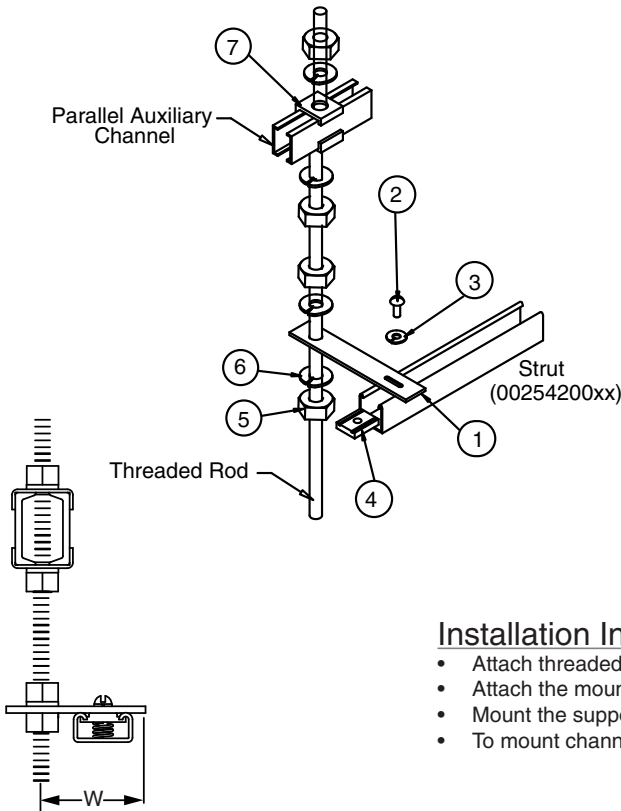


AUXILIARY FRAMING CHANNEL THREADED ROD MOUNTING KIT - STRUT

Modified:03/02/2010



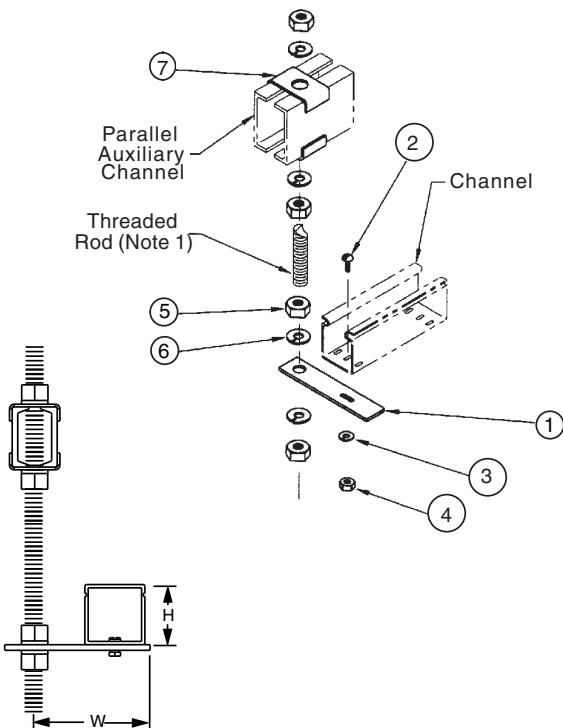
	part number	w	threaded rod
Ordering	0025540310	2.85 (72)	1/2"
	0025540410	2.85 (72)	5/8"

	Item	Qty	Description
Stock List	1	1	bracket
	2	1	1/4-20 x 3/4 rhms
	3	1	1/4 helical spring lock washer
	4	1	1/4-20 spring nut
	5	4	heavy hex nut
	6	4	helical spring lock washer
	7	2	parallel auxiliary framing clip

Installation Instructions:

- Attach threaded rod to the parallel auxiliary channel.
- Attach the mounting bracket at the desired position.
- Mount the support strut with bolt and spring nut.
- To mount channels or fittings use strut straight bracket mounting kit (0025560110 or 0025560210).

AUXILIARY FRAMING CHANNEL THREADED ROD MOUNTING KIT - CHANNEL



	part number	H	W	channel	threaded rod
	0025540510	2 (51)	3.8 (97)	2x2	1/2"
	0025540610	2 (51)	3.8 (97)	2x2	5/8"
	0025540710	4 (102)	5 (127)	4x4	1/2"
	0025540810	4 (102)	5 (127)	4x4	5/8"

	Item	Qty	Description
Stock List	1	1	bracket
	2	ar	10-32 x 1/2" rhms
	3	ar	10 helical spring lock washer
	4	ar	10-32 heavy hex nut
	5	4	heavy hex nut
	6	4	helical spring lock washer
	7	2	parallel auxiliary framing clip

Installation Instructions:

- Attach threaded rod to the parallel auxiliary channel.
- Attach the mounting bracket at the desired position.
- Mount the support rail with 1/4-20 hardware.
- When mounting a fitting, one or two 13/64" holes must be drilled in the fitting.