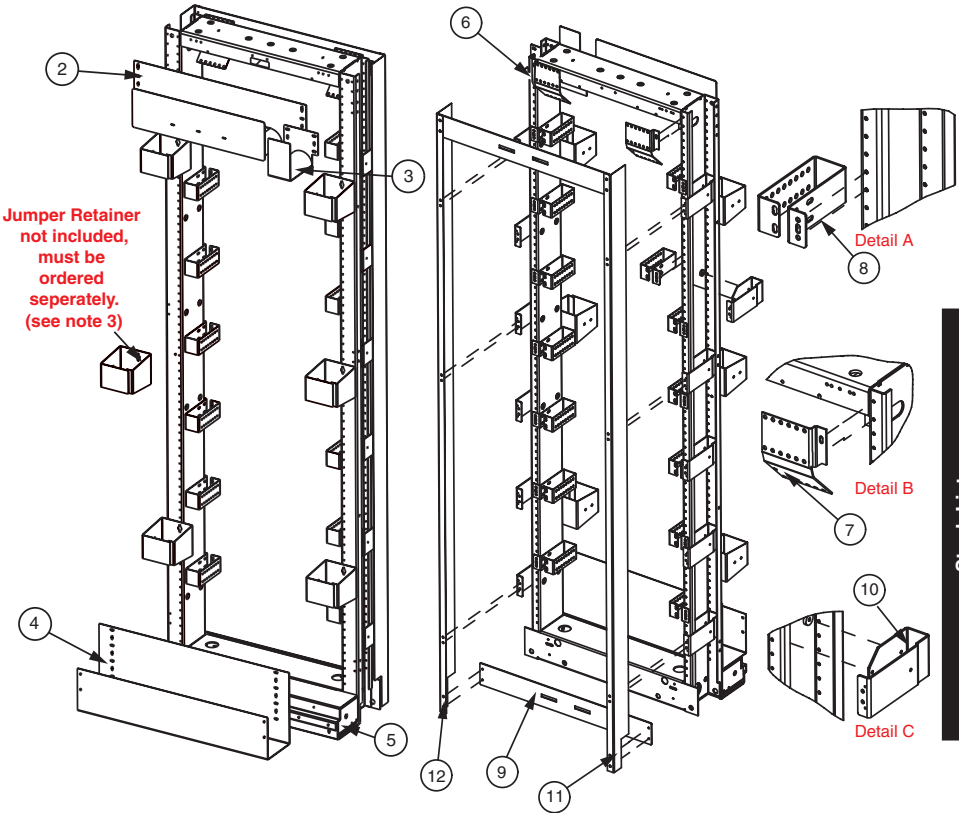


**SEISMIC 12" LGX FOT RACK KIT**

Modified:09/23/2009

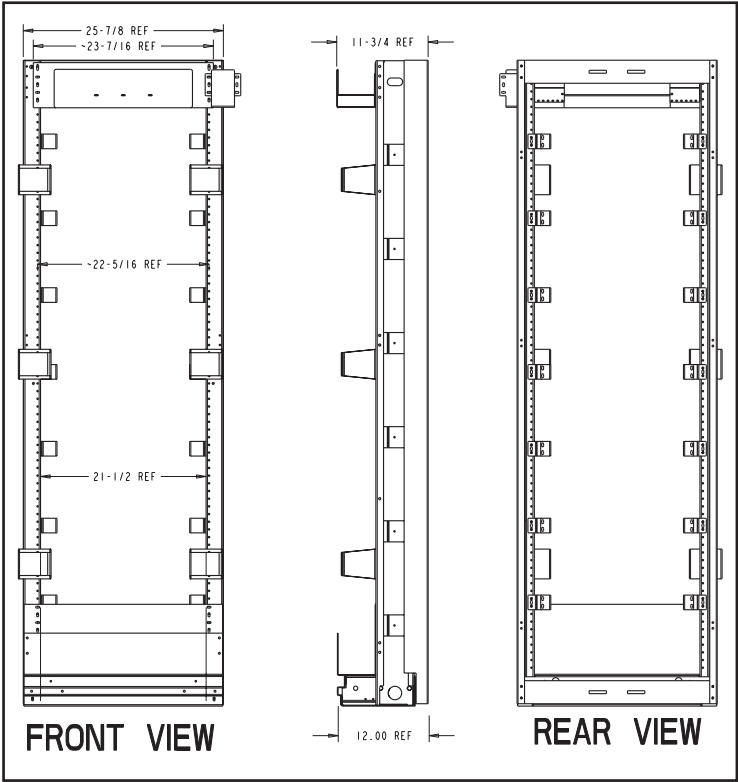


Ordering Table	part number	foot print
	2223640064	12"

Stock List	Item	Qty	Description
	1	1	fiber cable management kit
	2	1	upper raceway
	3	1	jumper support
	4	1	lower raceway
	5	1	7' x 23" netbay, closed, 1" mtg.
	6	1	cable retainer bracket , left
	7	1	cable retainer bracket , right
	8	14	LGX 12" cable retainer bracket
	9	2	LGX frame brace
	10	12	LGX 6.5" duct bracket
	11	1	side panel, left side
	12	1	side panel, right side

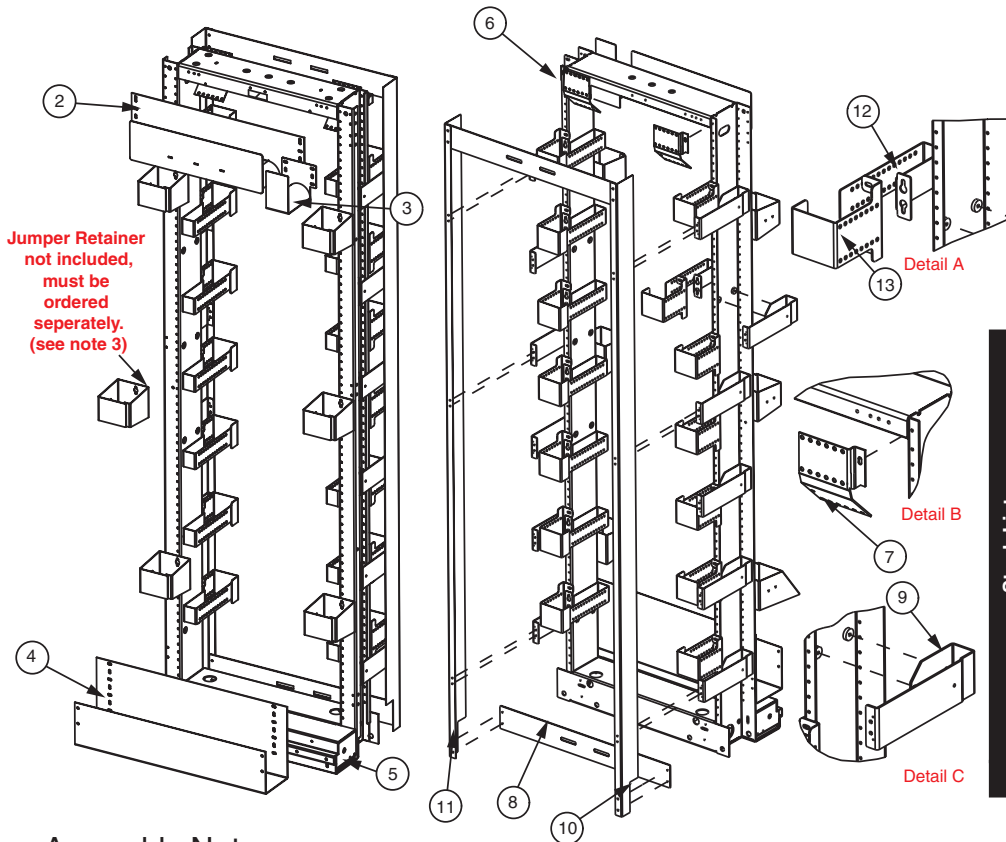
**Assembly Notes:**

1. Install the lower raceway (**Item 4**) using 6 (3 ea. side) 12-24 x 3/8 pan head machine screws found in hardware kit (**Item 1**) as shown in the picture.
2. Install the upper raceway (**Item 2**) using 6 (3 ea. side) 12-24 x 3/8 pan head machine screws found in hardware kit (**Item 1**) as shown in the picture. The jumper support (**Item 3**) can be installed as an extension to the upper raceway.
3. The jumper retainers (part #, **single shown 21231300xx, double 21231302xx**) must be ordered separately as an accessory item. If ordered, install the jumper retainers using (2) 12-24 x 3/8 pan head machine screws as shown in the picture. The jumper retainers can be installed in any location using the mtg. Holes on the rack (the picture is just an example).
4. Install the left & right cable retainer bracket assemblies (**Items 6 & 7**) to the rack using 4 (2 ea. Side) 12-24 x 3/8 pan head machine screws found in hardware kit (**part # 2126490110**) as shown in (**Detail B**).
5. Install the 14 LGX 12" cable retainer brackets (**Item 3**) on the mtg holes in the rack using 28 (2 ea. Bracket kit) 12-24 x 3/8 pan head machine screws found in hardware kit (**part # 2126490110**) as shown in (**Detail A**). These brackets can be installed in any location on the mtg holes per (**Detail A**)
6. Install the 12 LGX 6.5" Duct brackets (**Item 10**) using 24 (2 ea. Bracket) 12-24 x 3/8 pan head machine screws found in hardware kit (**part # 2126490110**) as shown in (detail c).
7. Install the left & right side panels (**Items 6 & 7**) using 12 (6 ea. Side panel) 12-24 x 1/2 pan head machine screws, 12 (6 ea. Side panel) no. 12 Plain washers and 12 (6 ea. Side panel) 12-24 heavy hex nuts found in hardware kit (**part # 2126490110**) as shown in the picture.
8. Install the two LGX frame braces (**Item 9**) to the side panels using 8 (4 ea. brace) 12-24 x 3/8 pan head machine screws found in hardware kit (**part # 2126490110**) as shown in the picture on the left.



## SEISMIC 15" LGX FOT RACK KIT

Modified:09/23/2009

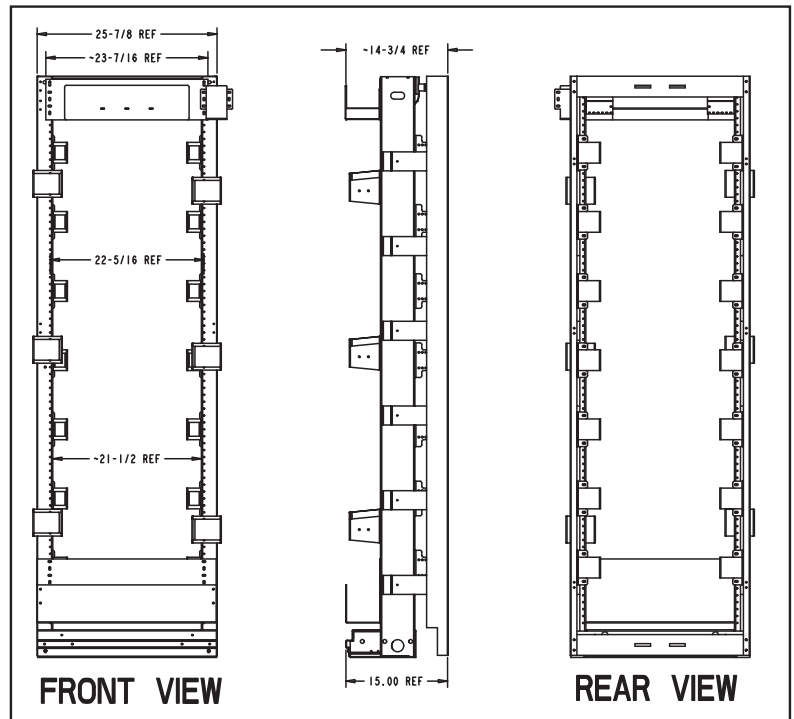


	part number	foot print
Ordering Table	2223640164	15"

	Item	Qty	Description
Stock List	1	1	fiber cable management kit
	2	1	upper raceway
	3	1	jumper support
	4	1	lower raceway
	5	1	7' x 23" netbay, closed, 1" mtg.
	6	1	cable retainer bracket , left
	7	1	cable retainer bracket , right
	8	2	LGX frame brace
	9	12	LGX 9.5" duct bracket
	10	1	side panel, left side
	11	1	side panel, right side
	12	14	LGX 15" cable retainer in bkt
	13	14	LGX 15" cable retainer ot bkt

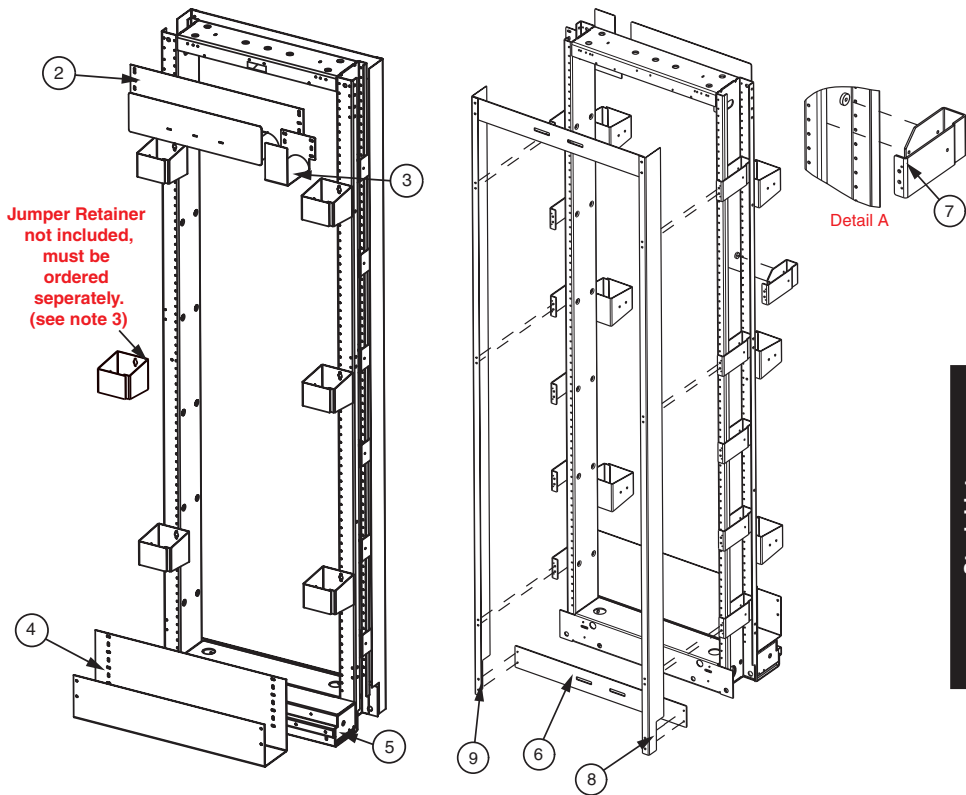
### Assembly Notes:

1. Install the lower raceway (**Item 4**) using 6 (3 ea. side) 12-24 x 3/8 pan head machine screws found in hardware kit (**Item 1**) as shown in the picture.
2. Install the upper raceway (**Item 4**) using 6 (3 ea. side) 12-24 x 3/8 pan head machine screws found in hardware kit (**Item 1**) as shown in the picture. The jumper support (**Item 3**) can be installed as an extension to the upper raceway.
3. The jumper retainers (part #, **single shown 21231300xx**, **double 21231302xx**) must be ordered separately as an accessory item. If ordered, install the jumper retainers using (2) 12-24 x 3/8 pan head machine screws as shown in the picture. The jumper retainers can be installed in any location using the mtg. Holes on the rack (the picture is just an example).
4. Install the left & right cable retainer bracket assemblies (**Items 6 & 7**) to the rack using 4 (2 ea. side) 12-24 x 3/8 pan head machine screws found in hardware kit (**part # 2126490110**) as shown in (**Detail B**).
5. Install the 14 LGX 15" cable retainer brackets (**Items 12 & 13**) on the mtg holes in the rack using 56 (4 ea. Bracket kit) 2-24 x 3/8 pan head machine screws found in hardware kit (**part # 2126490110**) as shown in (**Detail A**). These brackets can be installed in any location on the mtg holes per (**Detail A**) (picture is just an example).
6. Install the 12 LGX 9.5" Duct brackets (**Item 9**) using 24 (2 ea. Bracket) 12-24 x 3/8 pan head machine screws found in hardware kit (**part # 2126490110**) as shown in (detail c).
7. Install the left & right side panels (**Items 10 & 11**) using 12 (6 ea. Side panel) 12-24 x 1/2 pan head machine screws, 12 (6 ea. Side panel) no. 12 Plain washers and 12 (6 ea. Side panel) 12-24 heavy hex nuts found in hardware kit (**part # 2126490110**) as shown in the picture.
8. Install the two LGX frame braces (**Item 8**) to the side panels using 8 (4 ea. Brace) 12-24 x 3/8 pan head machine screws found in hardware kit (**part # 2126490110**) as shown in the picture.



SEISMIC 12" LGX OSP RACK KIT

Modified:09/23/2009

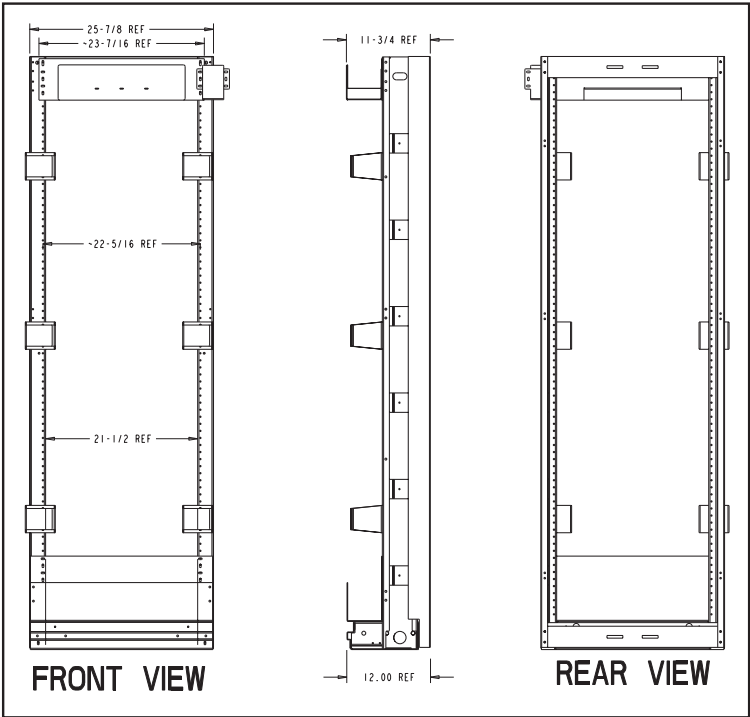


Ordering Table	part number	foot print
	2223641064	12"

Stock List	Item	Qty	Description
	1	1	fiber cable management kit
	2	1	upper raceway
	3	1	jumper support
	4	1	lower raceway
	5	1	7' x 23" netbay, closed, 1" mtg.
	6	2	LGX frame brace
	7	12	LGX 6.5" duct bracket
	8	1	side panel, left side
	9	1	side panel, right side

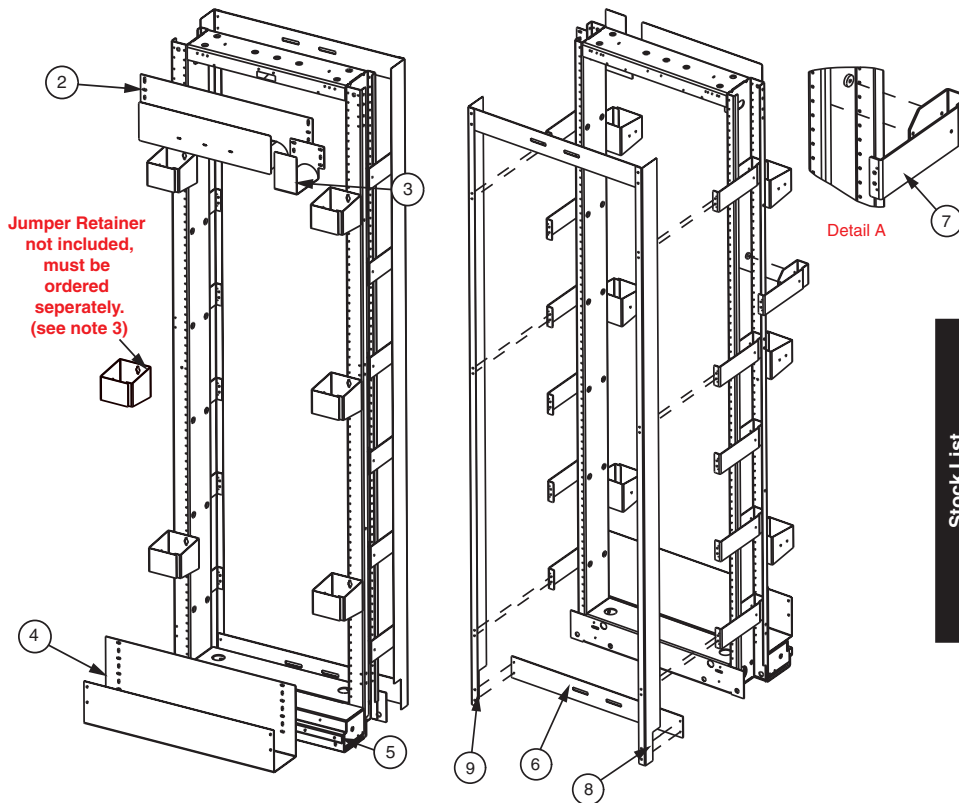
Assembly notes:

1. Install the lower raceway (Item 4) using 6 (3 ea. side) 12-24 x 3/8 pan head machine screws found in hardware kit (Item 1) as shown in the picture.
2. Install the upper raceway (Item 2) using 6 (3 ea. side) 12-24 x 3/8 pan head machine screws found in hardware kit (Item 1) as shown in the picture. The jumper support (Item 3) can be installed as an extension to the upper raceway.
3. The jumper retainers (part #, **single shown 21231300xx, double 21231302xx**) must be ordered separately as an accessory item. If ordered, install the jumper retainers using (2) 12-24 x 3/8 pan head machine screws as shown in the picture. The jumper retainers can be installed in any location using the mtg. Holes on the rack (the picture is just an example).
4. Install the 12 LGX 6.5" Duct brackets (Item 7) using 24 (2 ea. Bracket) 12-24 x 3/8 pan head machine screws found in hardware kit (part # 2126490110) as shown in (Detail A).
5. Install the left & right side panels (Items 8 & 9) using 12 (6 ea. Side panel) 12-24 x 1/2 pan head machine screws, 12 (6 ea. Side panel) no. 12 Plain washers and 12 (6 ea. Side panel) 12-24 heavy hex nuts found in hardware kit (part # 2126490110) as shown in the picture on the left.
6. Install the two LGX frame braces (Item 6) to the side panels using 8 (4 ea. Brace) 12-24 x 3/8 pan head machine screws found in hardware kit (part # 2126490110) as shown in the picture on the left.



## SEISMIC 15" LGX OSP RACK KIT

Modified:09/23/2009



	part number	foot print
Ordering Table	2223641164	15"

	Item	Qty	Description
Stock List	1	1	fiber cable management kit
	2	1	upper raceway
	3	1	jumper support
	4	1	lower raceway
	5	1	7' x 23" netbay, closed, 1" mtg.
	6	2	LGX frame brace
	7	12	LGX 9.5" duct bracket
	8	1	side panel, left side
	9	1	side panel, right side

### Assembly Notes:

1. Install the lower raceway (**Item 4**) using 6 (3 ea. side) 12-24 x 3/8 pan head machine screws found in hardware kit (**Item 1**) as shown in the picture.
2. Install the upper raceway (**Item 2**) using 6 (3 ea. side) 12-24 x 3/8 pan head machine screws found in hardware kit (**Item 1**) as shown in the picture. The jumper support (**Item 3**) can be installed as an extension to the upper raceway.
3. The jumper retainers (part #, **single shown 21231300xx**, **double 21231302xx**) must be ordered separately as an accessory item. If ordered, install the jumper retainers using (2) 12-24 x 3/8 pan head machine screws as shown in the picture. The jumper retainers can be installed in any location using the mtg. Holes on the rack (the picture is just an example).
4. Install the 12 LGX 9.5" Duct brackets (**Item 7**) using 24 (2 ea. Bracket) 12-24 x 3/8 pan head machine screws found in hardware kit (**part # 2126490110**) as shown in (**Detail A**).
5. Install the left & right side panels (**Items 8 & 9**) using 12 (6 ea. Side panel) 12-24 x 1/2 pan head machine screws, 12 (6 ea. Side panel) no. 12 Plain washers and 12 (6 ea. Side panel) 12-24 heavy hex nuts found in hardware kit (**part # 2126490110**) as shown in the picture on the left.
6. Install the two LGX frame braces (**Item 6**) to the side panels using 8 (4 ea. Brace) 12-24 x 3/8 pan head machine screws found in hardware kit (**part # 2126490110**) as shown in the picture on the left.

